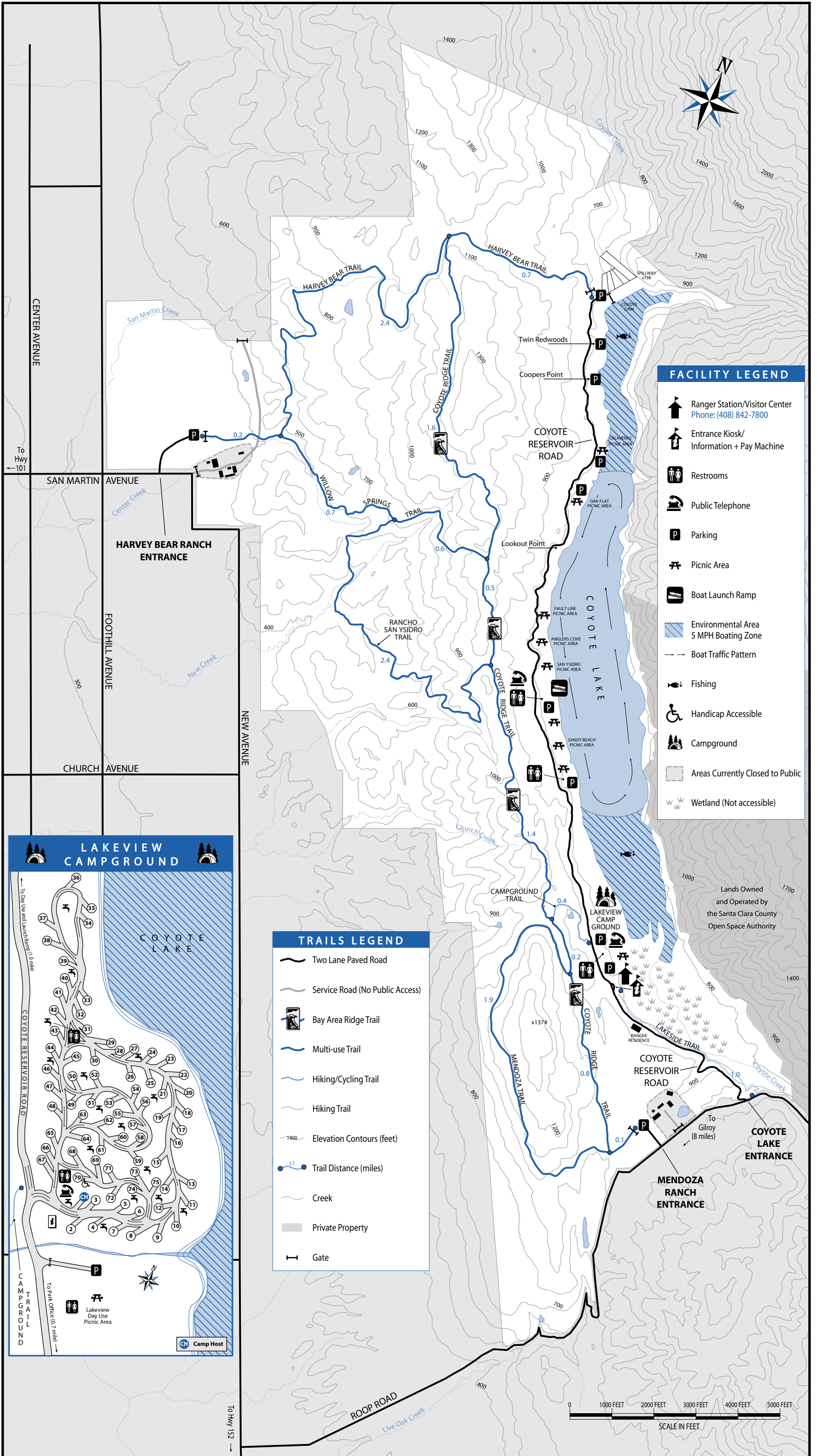




SANTA CLARA COUNTY PARKS

# Coyote Lake - Harvey Bear Ranch County Park



### FACILITY LEGEND

- Ranger Station/Visitor Center  
Phone: (408) 842-7800
- Entrance Kiosk/  
Information + Pay Machine
- Restrooms
- Public Telephone
- Parking
- Picnic Area
- Boat Launch Ramp
- Environmental Area
- 5 MPH Boating Zone
- Boat Traffic Pattern
- Fishing
- Handicap Accessible
- Campground
- Areas Currently Closed to Public
- Wetland (Not accessible)

### TRAILS LEGEND

- Two Lane Paved Road
- Service Road (No Public Access)
- Bay Area Ridge Trail
- Multi-use Trail
- Hiking/Cycling Trail
- Hiking Trail
- Elevation Contours (feet)
- Trail Distance (miles)
- Creek
- Private Property
- Gate

### LAKEVIEW CAMPGROUND

