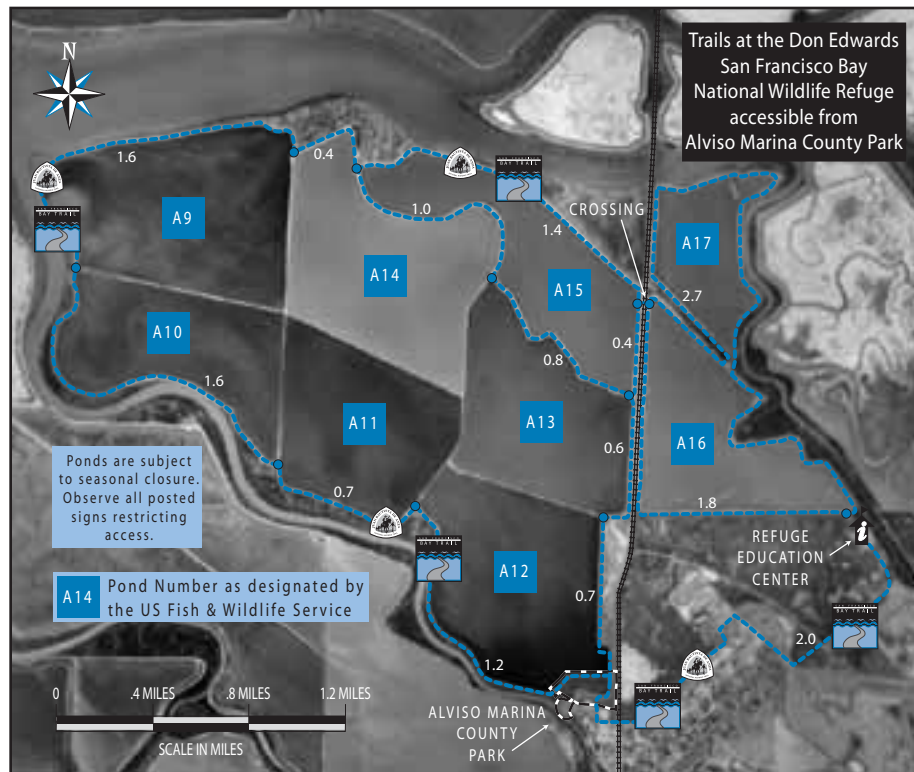


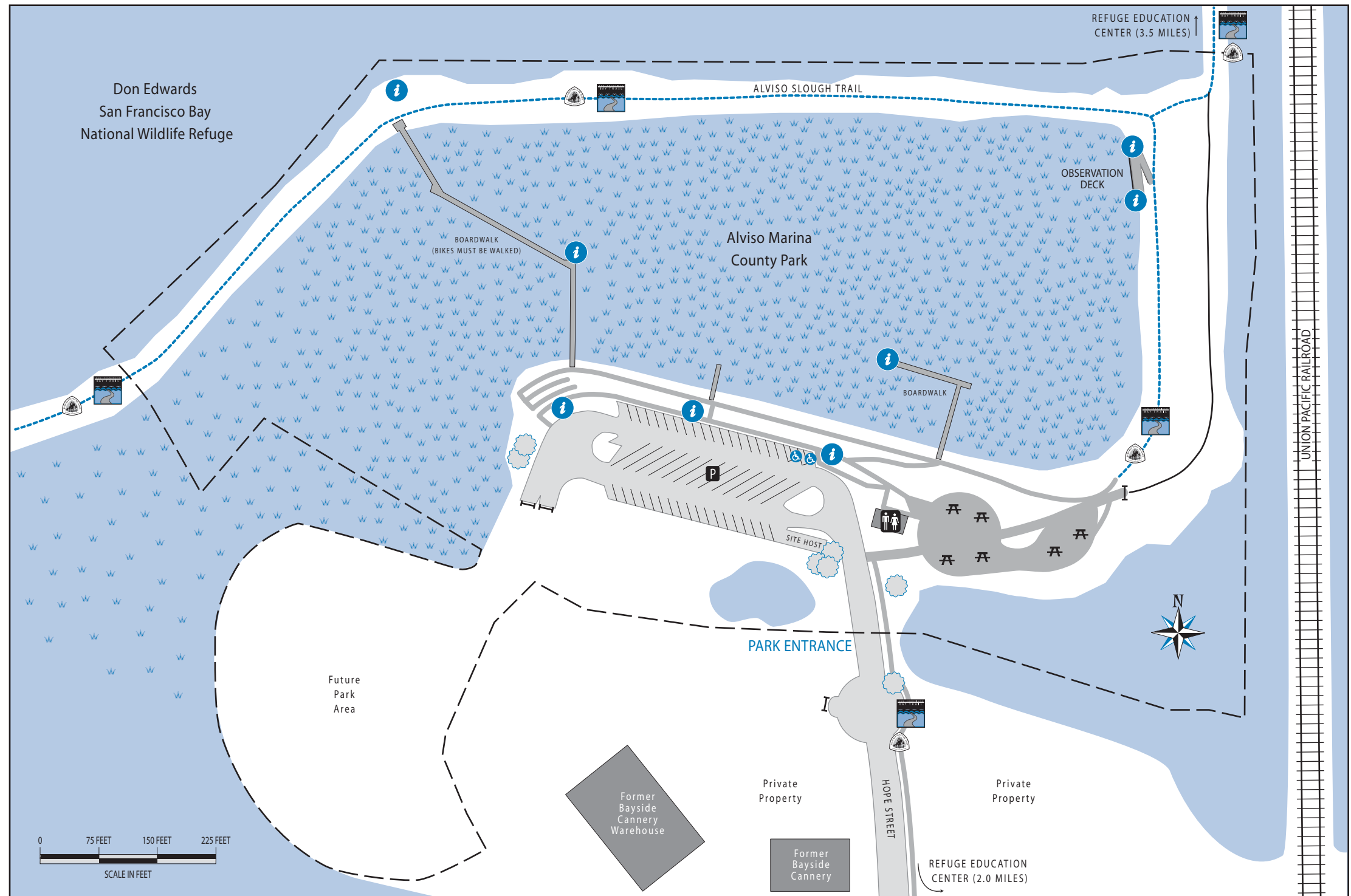
Alviso Marina County Park



SANTA CLARA COUNTY PARKS



The new boardwalk spanning the Marina



- | | | | | |
|--|--|------------------------------|--------------------------|---------------------|
| (408)262-6980 Ranger Station located at Ed R. Levin County Park (Milpitas) | — Pathway (Pedestrian, Dog, & Bike Access) | — County Park Boundary | P Parking | W Vegetated Wetland |
| 🏠 Don Edwards San Francisco Bay National Wildlife Refuge | ⋯ Trail (Pedestrian & Bike Access) | 🌊 San Francisco Bay Trail | ♿ Disabled Parking Space | 🌊 Open Water |
| (408)262-5513 Education Center (Alviso) | — Boardwalk (Pedestrian Access Only) | 🏠 Juan Baustista de Anza NHT | 🚻 Restroom | 🌳 Tree |
| (510)792-0222 Refuge Office (Newark) | — Service Road | 📍 Interpretive Panel | 🍷 Picnic Table | ⚓ Gate |