



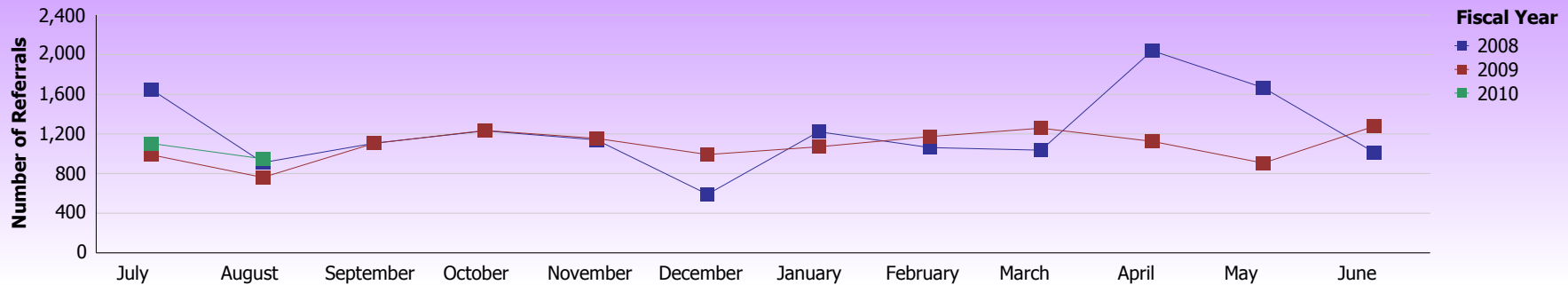
County of Santa Clara

Report Fiscal Year: 2010

Report Month: August

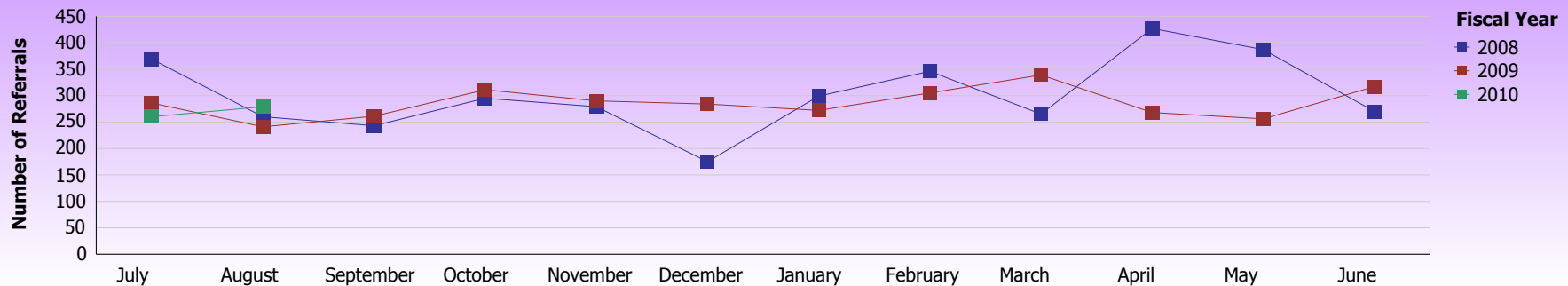


Monthly Trend - Arrest



Referral Count	Jul	Aug	Sep	Oct	Nov	Dec	Jan	Feb	Mar	Apr	May	Jun	Total
2008	1646	911	1106	1231	1140	591	1222	1062	1036	2040	1666	1012	14663
2009	988	761	1105	1235	1155	992	1070	1173	1258	1125	906	1278	13046
2010	1103	949											2052

Monthly Trend - Felony Arrest



Felony Referral Count	Jul	Aug	Sep	Oct	Nov	Dec	Jan	Feb	Mar	Apr	May	Jun	Total
2008	369	260	243	295	279	175	299	346	265	427	387	270	3615
2009	286	241	261	311	290	284	272	305	339	268	256	317	3430
2010	260	279											539



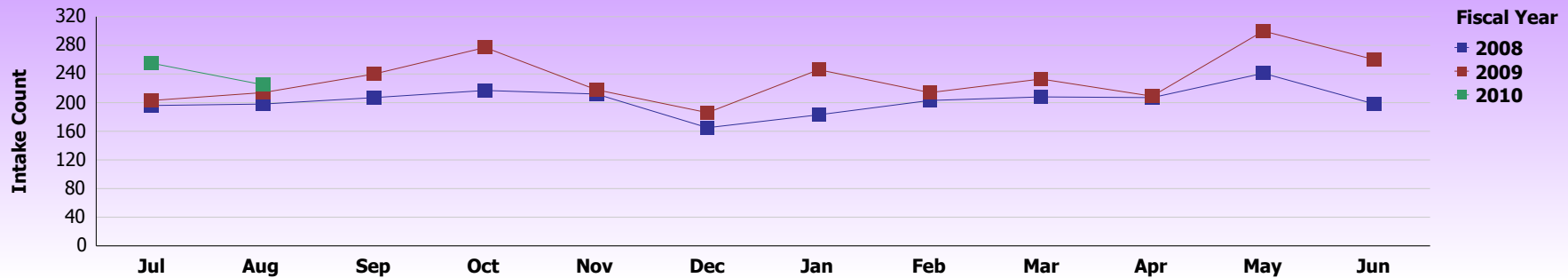
County of Santa Clara

Report Fiscal Year: 2010
Report Month: August

Book
Minor?

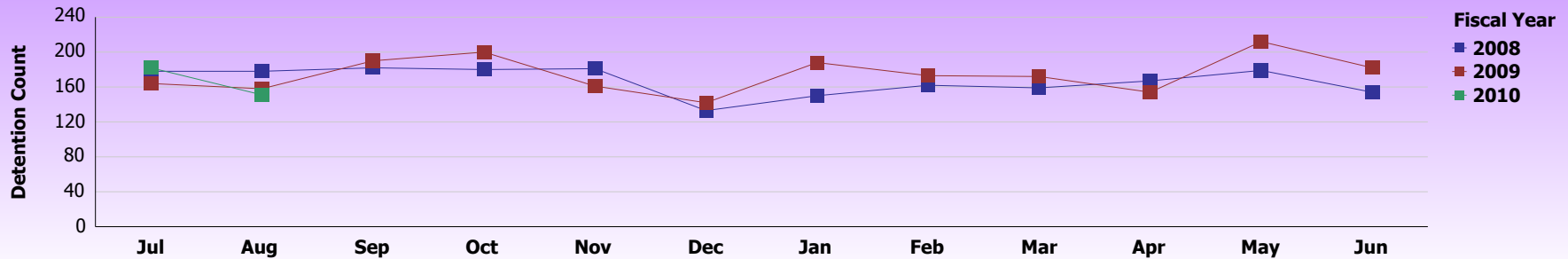
JH Hold
or Detain?

Monthly Trend - Juvenile Hall Intake



Intake	Jul	Aug	Sep	Oct	Nov	Dec	Jan	Feb	Mar	Apr	May	Jun	Total
2008	196	198	207	217	212	165	183	203	208	207	241	198	2435
2009	203	214	240	277	218	186	246	214	233	209	300	260	2800
2010	255	225											480

Monthly Trend - Juvenile Hall Detention



Detained	Jul	Aug	Sep	Oct	Nov	Dec	Jan	Feb	Mar	Apr	May	Jun	Total
2008	178	178	182	180	181	133	150	162	159	167	179	154	2003
2009	164	158	190	200	161	142	188	173	172	154	212	182	2096
2010	182	151											333

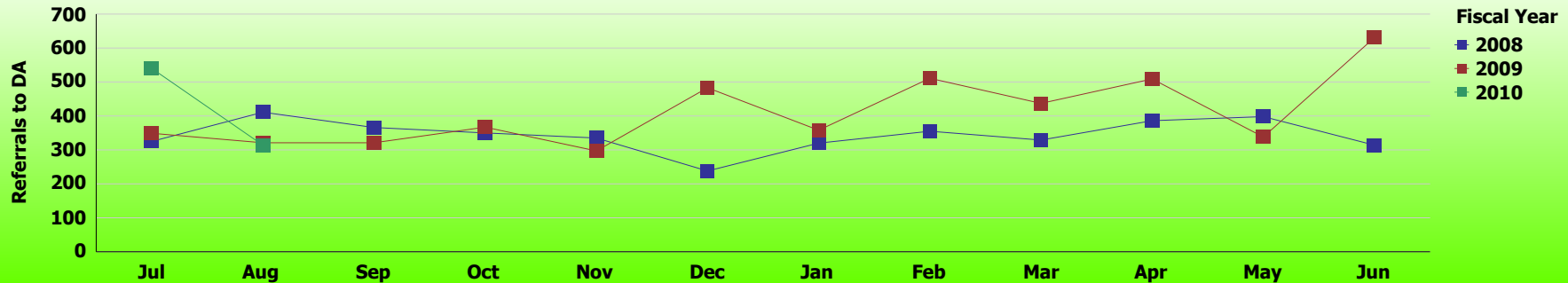


County of Santa Clara

Report Fiscal Year: 2010
Report Month: August

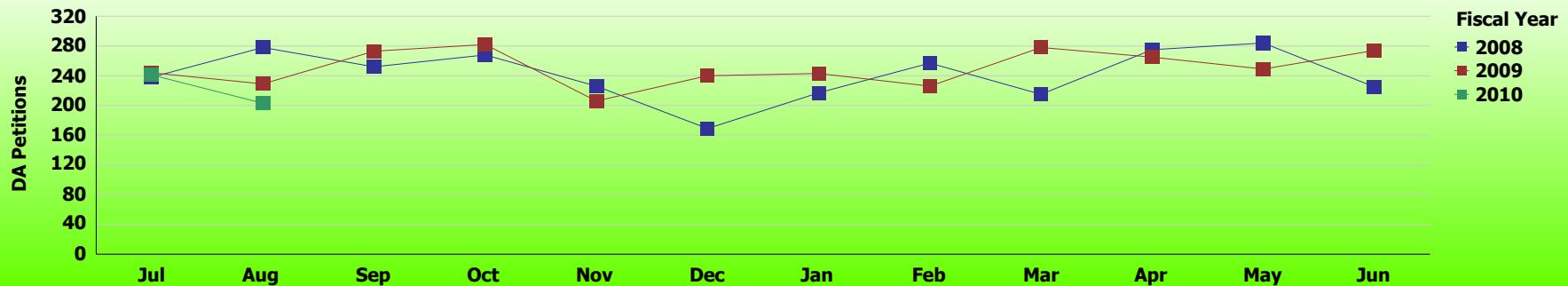


Monthly Trend - Referral to DA

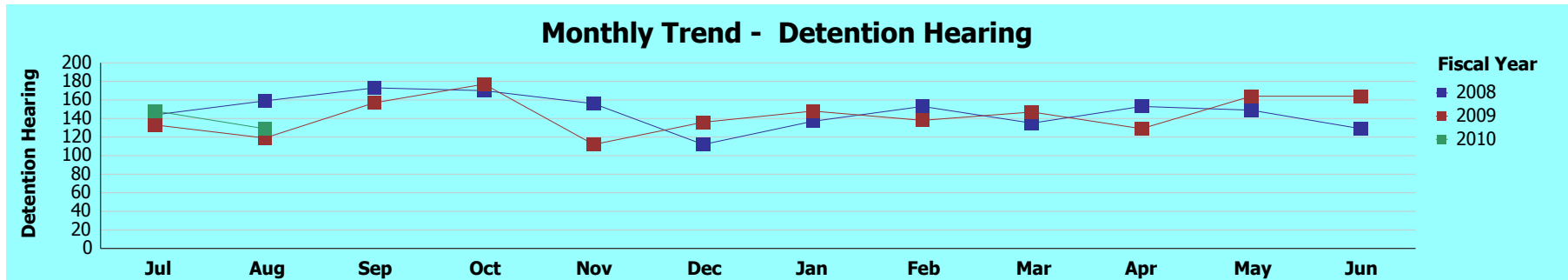


Referral to DA	Jul	Aug	Sep	Oct	Nov	Dec	Jan	Feb	Mar	Apr	May	Jun	Total
2008	325	411	366	350	335	238	320	355	329	386	398	314	4127
2009	349	321	321	367	297	483	358	511	437	509	338	631	4922
2010	540	314											854

Monthly Trend - Petition Filed by DA



Petition Filed by DA	Jul	Aug	Sep	Oct	Nov	Dec	Jan	Feb	Mar	Apr	May	Jun	Total
2008	238	278	252	268	226	169	217	257	215	275	284	225	2904
2009	244	229	273	282	206	240	243	226	278	265	249	274	3009
2010	241	203											444



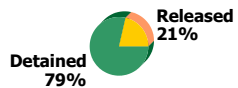
Detention Hearing		Jul	Aug	Sep	Oct	Nov	Dec	Jan	Feb	Mar	Apr	May	Jun	Total
2008	Detained	133	134	151	153	138	102	119	134	114	135	140	112	1565
	Released	11	25	22	17	18	10	18	19	21	18	9	17	205
	Total	144	159	173	170	156	112	137	153	135	153	149	129	1770
2009	Detained	112	110	137	151	97	121	135	128	129	104	141	140	1505
	Released	21	9	20	26	15	15	13	10	18	25	23	24	219
	Total	133	119	157	177	112	136	148	138	147	129	164	164	1724
2010	Detained	104	114											218
	Released	44	15											59
	Total	148	129											277



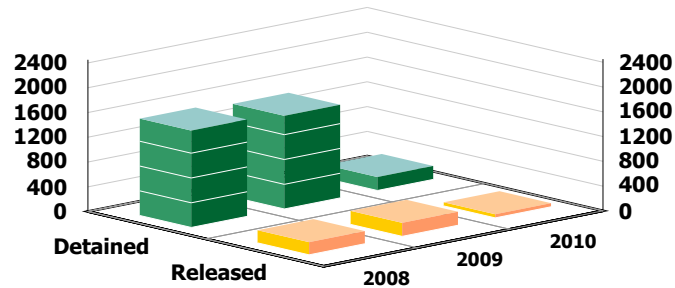
2008



2009



2010



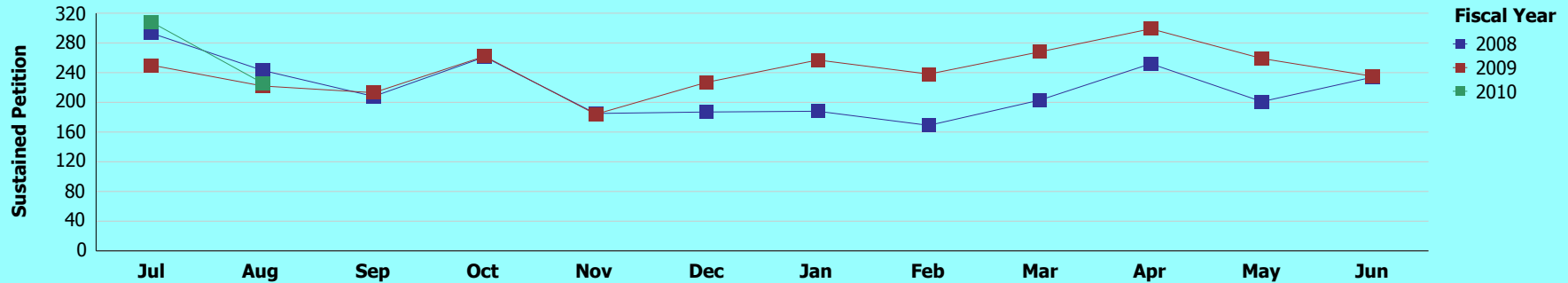


County of Santa Clara

Report Fiscal Year: 2010
Report Month: August

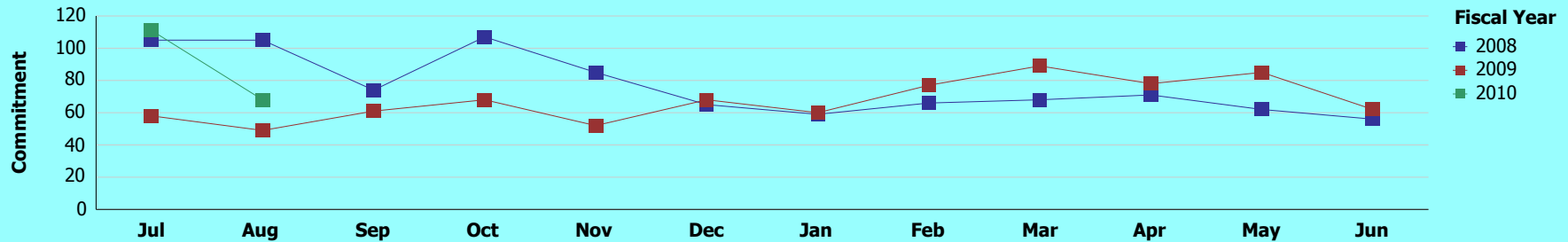


Monthly Trend - Sustained Petition



Sustained Petition	Jul	Aug	Sep	Oct	Nov	Dec	Jan	Feb	Mar	Apr	May	Jun	Total
2008	293	243	208	261	185	187	188	169	203	252	201	234	2624
2009	250	222	213	262	184	227	257	238	268	299	259	235	2914
2010	308	226											534

Monthly Trend - JH, Ranch, CJ, CDCR Commitment

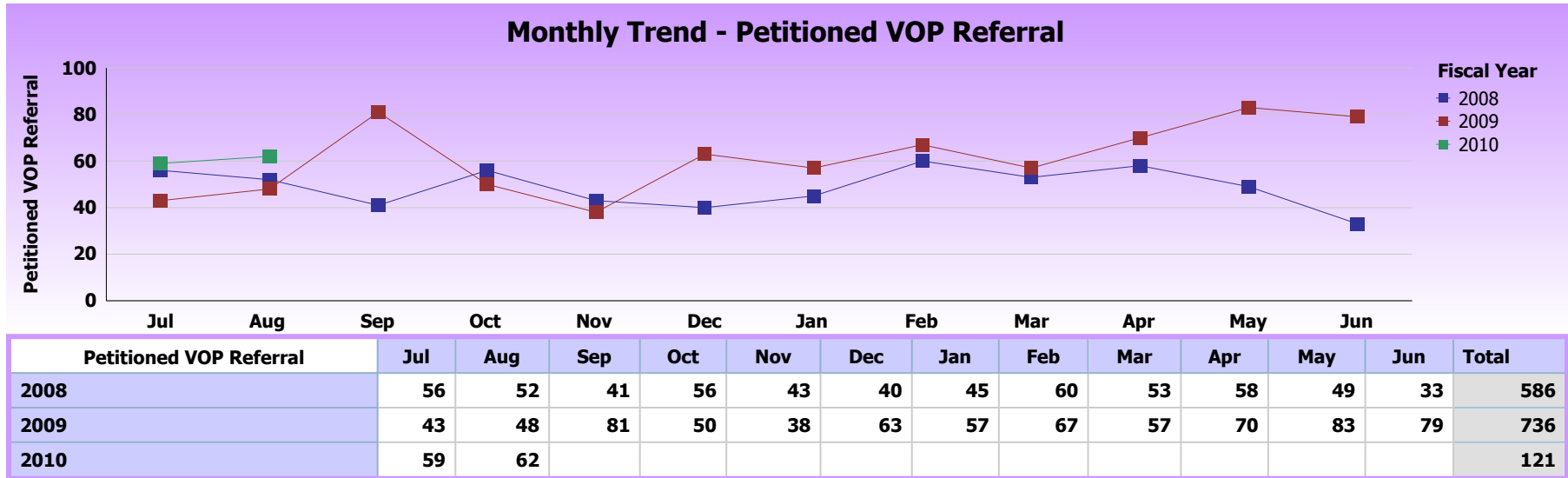
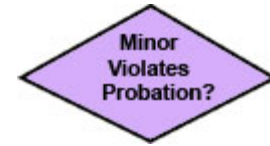


JH, Ranch, CJ, CDCR Commitment	Jul	Aug	Sep	Oct	Nov	Dec	Jan	Feb	Mar	Apr	May	Jun	Total
2008	105	105	74	107	85	65	59	66	68	71	62	56	923
2009	58	49	61	68	52	68	60	77	89	78	85	62	807
2010	111	68											179



County of Santa Clara

Report Fiscal Year: 2010
 Report Month: August





County of Santa Clara

Report Fiscal Year: 2010

Report Month: August

KEY ARREST DEMOGRAPHICS

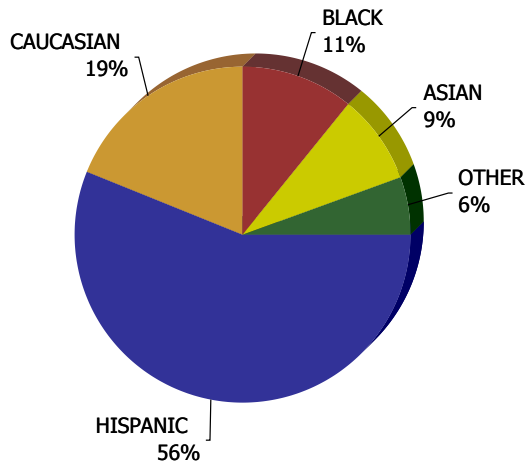


County of Santa Clara

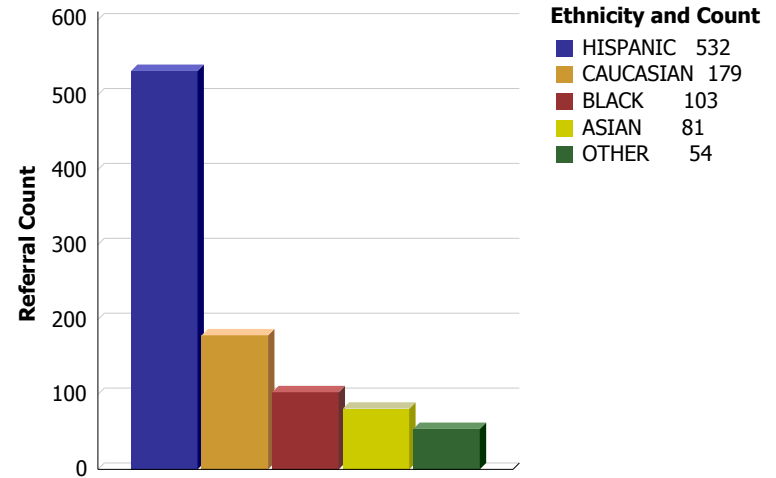
Report Fiscal Year: 2010

Report Month: August

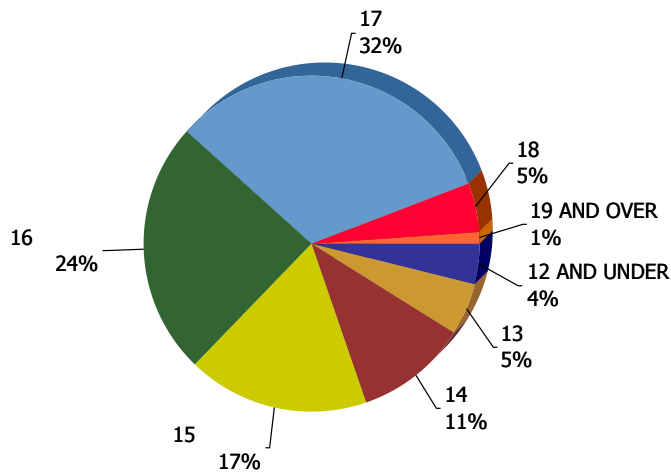
By Ethnicity (%)



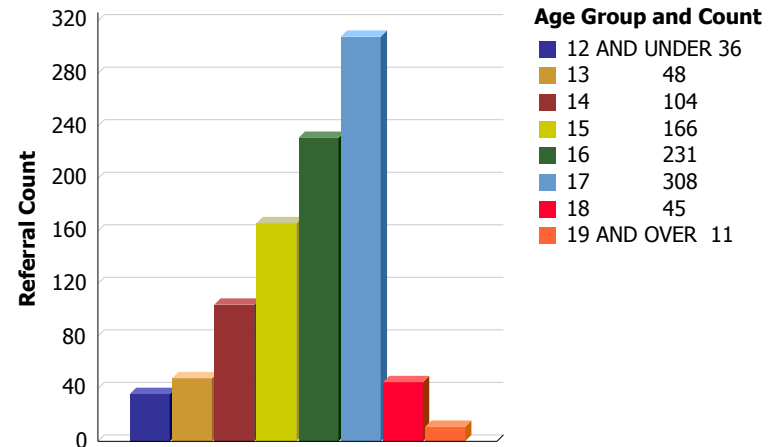
By Ethnicity (Count)



By Age (%)



By Age (Count)



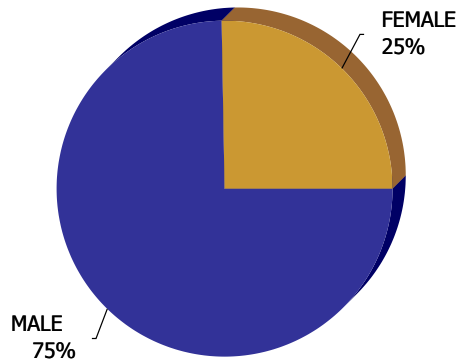


County of Santa Clara

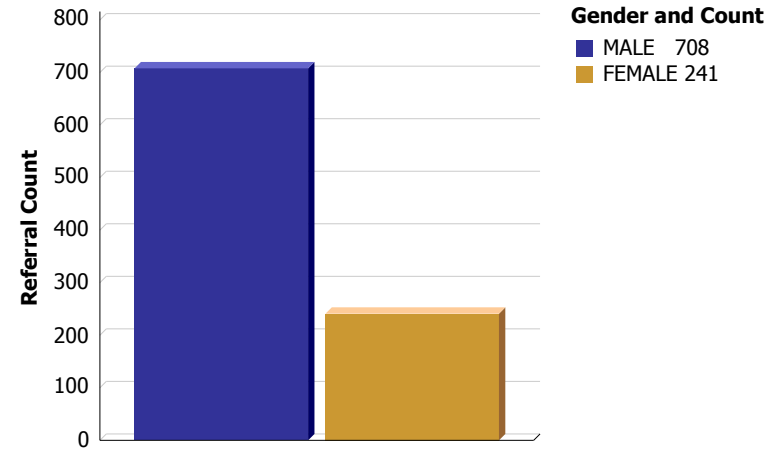
Report Fiscal Year: 2010

Report Month: August

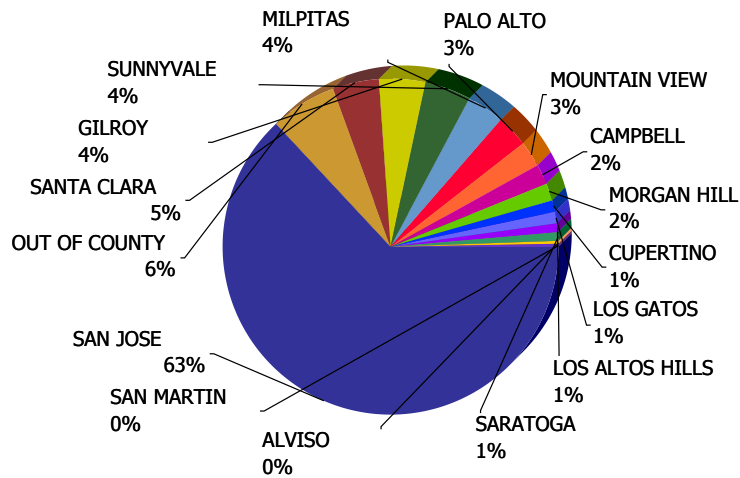
By Gender (%)



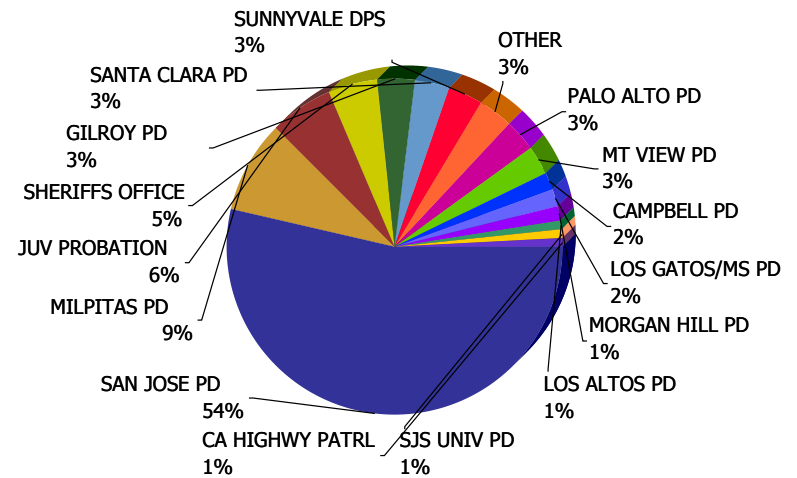
By Gender (Count)



By Youth Residence City (%)

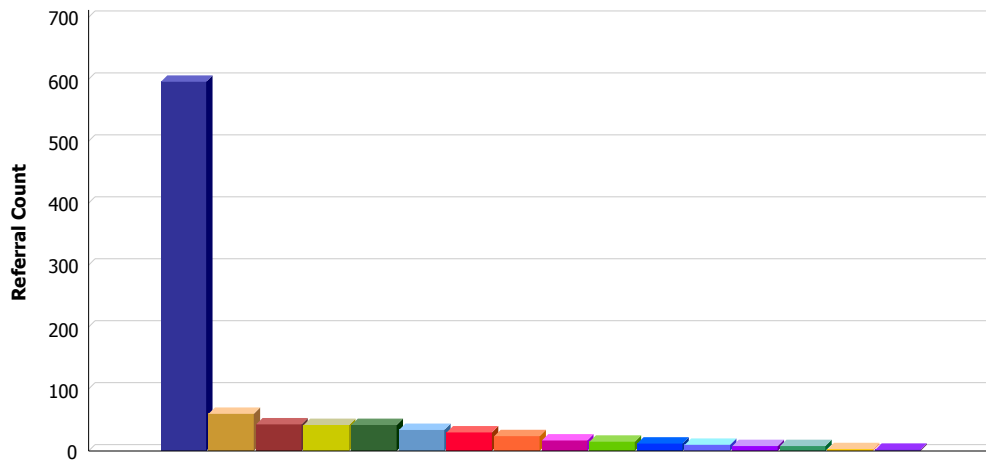


By Referral Agency (%)





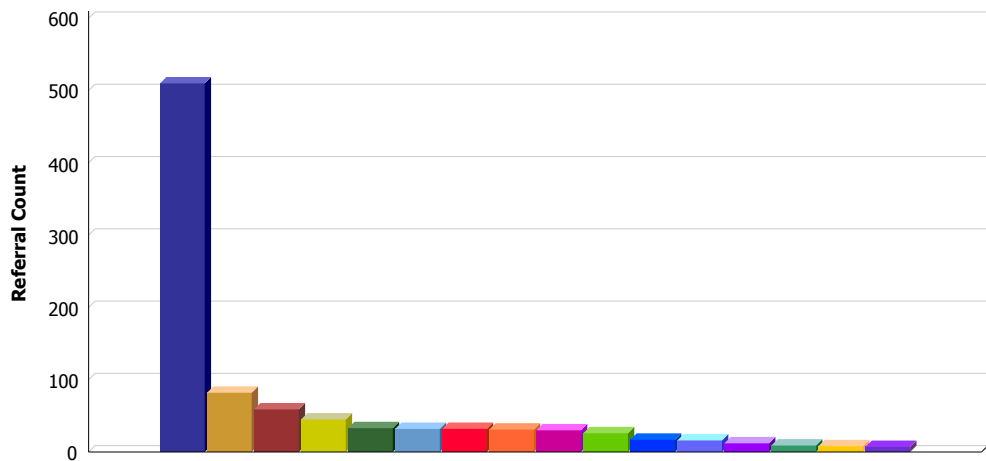
By Youth Residence City (Count)



City and Count

SAN JOSE	596
OUT OF COUNTY	60
SANTA CLARA	43
GILROY	42
SUNNYVALE	42
MILPITAS	34
PALO ALTO	30
MOUNTAIN VIEW	24
CAMPBELL	17
MORGAN HILL	15
CUPERTINO	12
LOS GATOS	10
LOS ALTOS HILLS	8
SARATOGA	8
ALVISO	3
SAN MARTIN	2

By Referral Agency (Count)

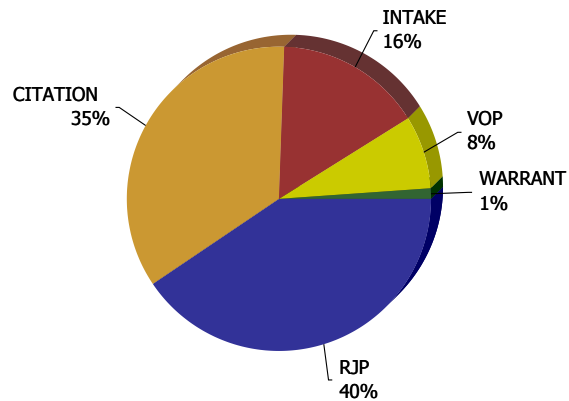


Agency Group and Count

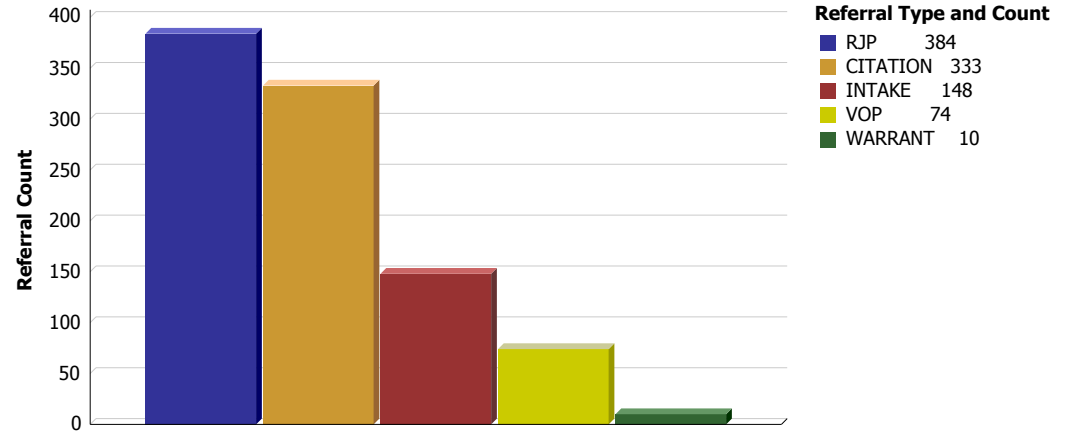
SAN JOSE PD	510
MILPITAS PD	82
JUV PROBATION	59
SHERIFFS OFFICE	45
GILROY PD	33
SANTA CLARA PD	32
SUNNYVALE DPS	32
OTHER	31
PALO ALTO PD	30
MT VIEW PD	26
CAMPBELL PD	17
LOS GATOS/MS PD	16
MORGAN HILL PD	12
LOS ALTOS PD	9
SJS UNIV PD	8
CA HIGHWAY PATRL	7



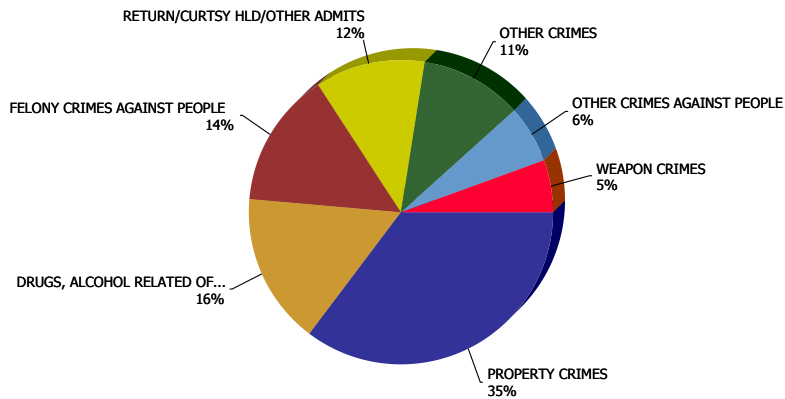
By Referral Type (%)



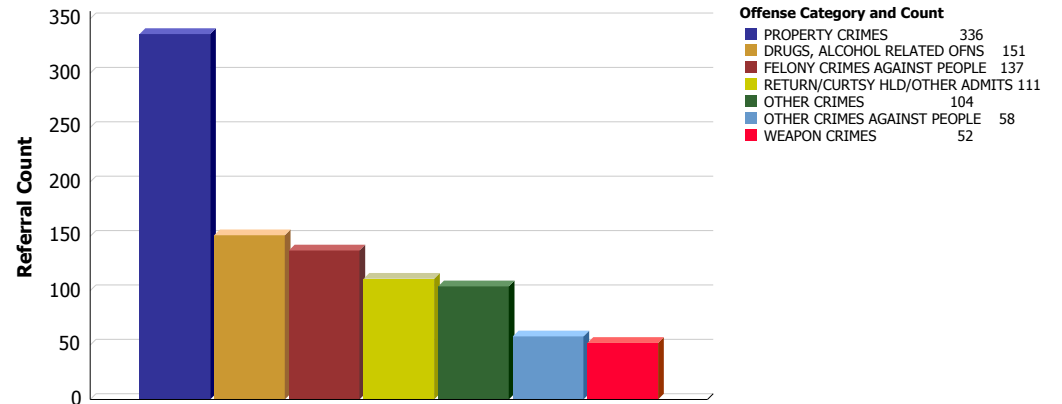
By Referral Type (Count)



By Major Offense Category (%)

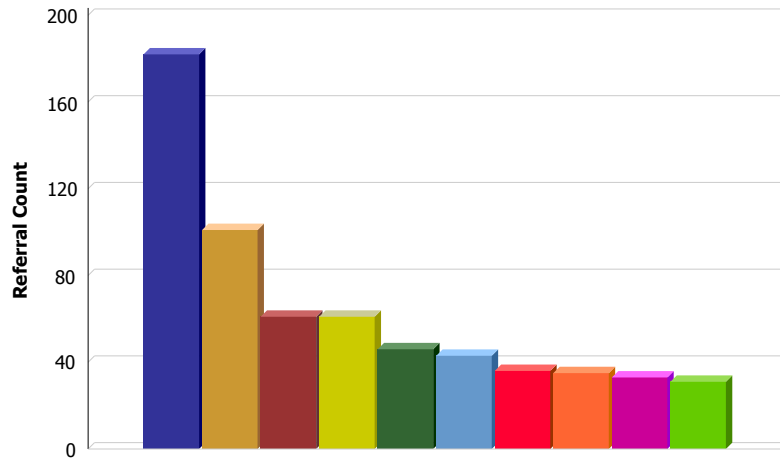


By Major Offense Category (Count)





Top 10 Overall Offenses by Subcategory

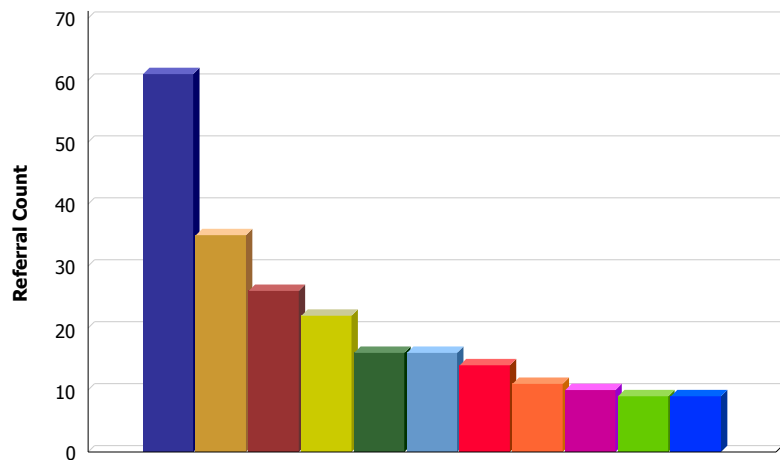


Offenses and Count

THEFT,PETTY; BURGLARY TOOLS	182
VOP - FTO	101
BURGLARY - 1ST DEGREE	61
POSSESS/SALE OF DRUGS	61
VANDALISM, MALICIOUS MISCHIEF	46
MISD ASSAULT, FIGHTING	43
OBSTRCT,RESI ARRST,DSTRB PEACE	36
ROBBERY	35
OTHER DRUG/ALCOHOL CHARGES	33
TRESPASSING PRIVATE PROPERTY	31

Rank	Subcategory	Referral Count
1	THEFT,PETTY; BURGLARY TOOLS	182
2	VOP - FTO	101
3	BURGLARY - 1ST DEGREE	61
3	POSSESS/SALE OF DRUGS	61
5	VANDALISM, MALICIOUS MISCHIEF	46
6	MISD ASSAULT, FIGHTING	43
7	OBSTRCT,RESI ARRST,DSTRB PEACE	36
8	ROBBERY	35
9	OTHER DRUG/ALCOHOL CHARGES	33
10	TRESPASSING PRIVATE PROPERTY	31

Top 10 Felony Offenses by Subcategory



Offenses and Count

BURGLARY - 1ST DEGREE	61
ROBBERY	35
THEFT, AUTO	26
FELONY WEAPONS	22
OTHER FELONY SEX OFFENSE	16
POSSESS/SALE OF DRUGS	16
THEFT, GRAND	14
VANDALISM, MALICIOUS MISCHIEF	11
POSSESS/REC'VING STLEN PROPERTY	10
FELONY ASSAULT: ADW	9
FELONY THREATS	9

Rank	Subcategory	Referral Count
1	BURGLARY - 1ST DEGREE	61
2	ROBBERY	35
3	THEFT, AUTO	26
4	FELONY WEAPONS	22
5	OTHER FELONY SEX OFFENSE	16
5	POSSESS/SALE OF DRUGS	16
7	THEFT, GRAND	14
8	VANDALISM, MALICIOUS MISCHIEF	11
9	POSSESS/REC'VING STLEN PROPERTY	10
10	FELONY ASSAULT: ADW	9
10	FELONY THREATS	9



County of Santa Clara

Report Fiscal Year: 2010

Report Month: August

Top 20 ZIP Codes

Rank	ZIP	CITY	Referral Count	Felony Count	Felony Percentage
1	95127	SAN JOSE	62	14	23%
2	95116	SAN JOSE	61	19	31%
3	99999	OUT OF COUNTY	60	21	35%
4	95122	SAN JOSE	54	13	24%
5	95112	SAN JOSE	43	17	40%
6	95020	GILROY	42	15	36%
6	95123	SAN JOSE	42	13	31%
8	95111	SAN JOSE	40	16	40%
9	95035	MILPITAS	33	11	33%
10	95148	SAN JOSE	29	9	31%
11	95110	SAN JOSE	24	6	25%
11	95125	SAN JOSE	24	4	17%
11	95126	SAN JOSE	24	8	33%
14	95051	SANTA CLARA	21	5	24%
14	95136	SAN JOSE	21	10	48%
16	95117	SAN JOSE	20	2	10%
16	95121	SAN JOSE	20	2	10%
18	95132	SAN JOSE	19	5	26%
19	95128	SAN JOSE	18	6	33%
19	95133	SAN JOSE	18	6	33%

Top 20 School Districts

Rank	School District	Referral Count	Felony Count	Felony Percentage
1	EAST SIDE UNION	195	39	20%
2	SAN JOSE UNIFIED	116	36	31%
3	OTHER/OUT OF COUNTY	105	24	23%
4	UNKNOWN	91	43	47%
5	COE-COMMUNITY	56	20	36%
6	CAMPBELL UNION	55	12	22%
7	FREMONT UNION	43	9	21%
8	COE-COURT	32	7	22%
9	GILROY UNIFIED	27	7	26%
10	ALUM ROCK	23	12	52%
10	SANTA CLARA UNIFIED	23	5	22%
12	MILPITAS UNIFIED	21	6	29%
12	NOT ATTENDING	21	14	67%
14	MVW-LOS ALTOS UNION	19	5	26%
15	OAK GROVE	17	9	53%
16	IN CNTY PRVTE(150+)	14	1	7%
17	CAMPBELL	13	9	69%
17	MORGAN HILL UNIFIED	13	4	31%
19	PALO ALTO UNIFIED	10	1	10%
20	LOS GATOS-SARATOGA	8	2	25%
20	MOUNT PLEASANT	8	1	12%