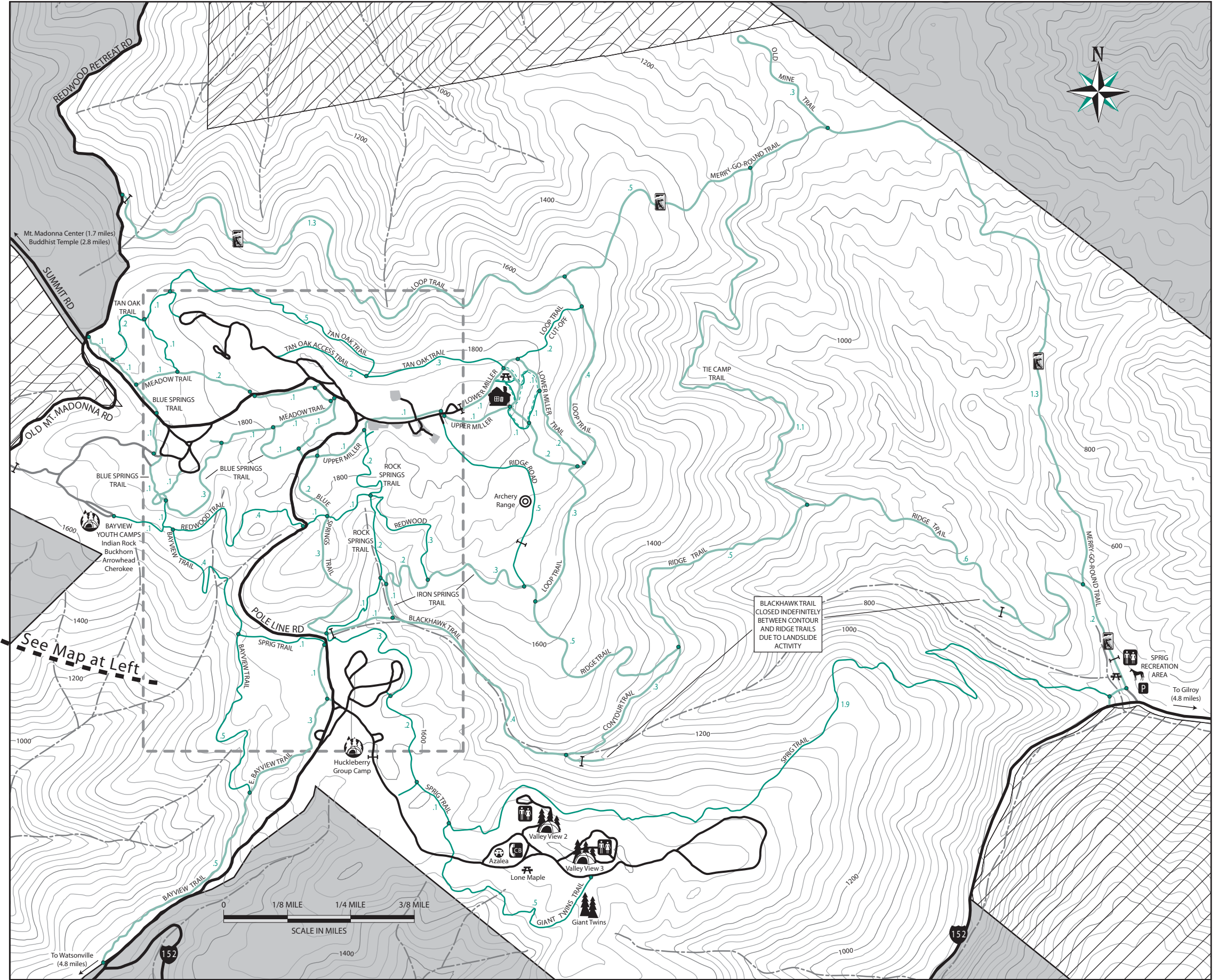
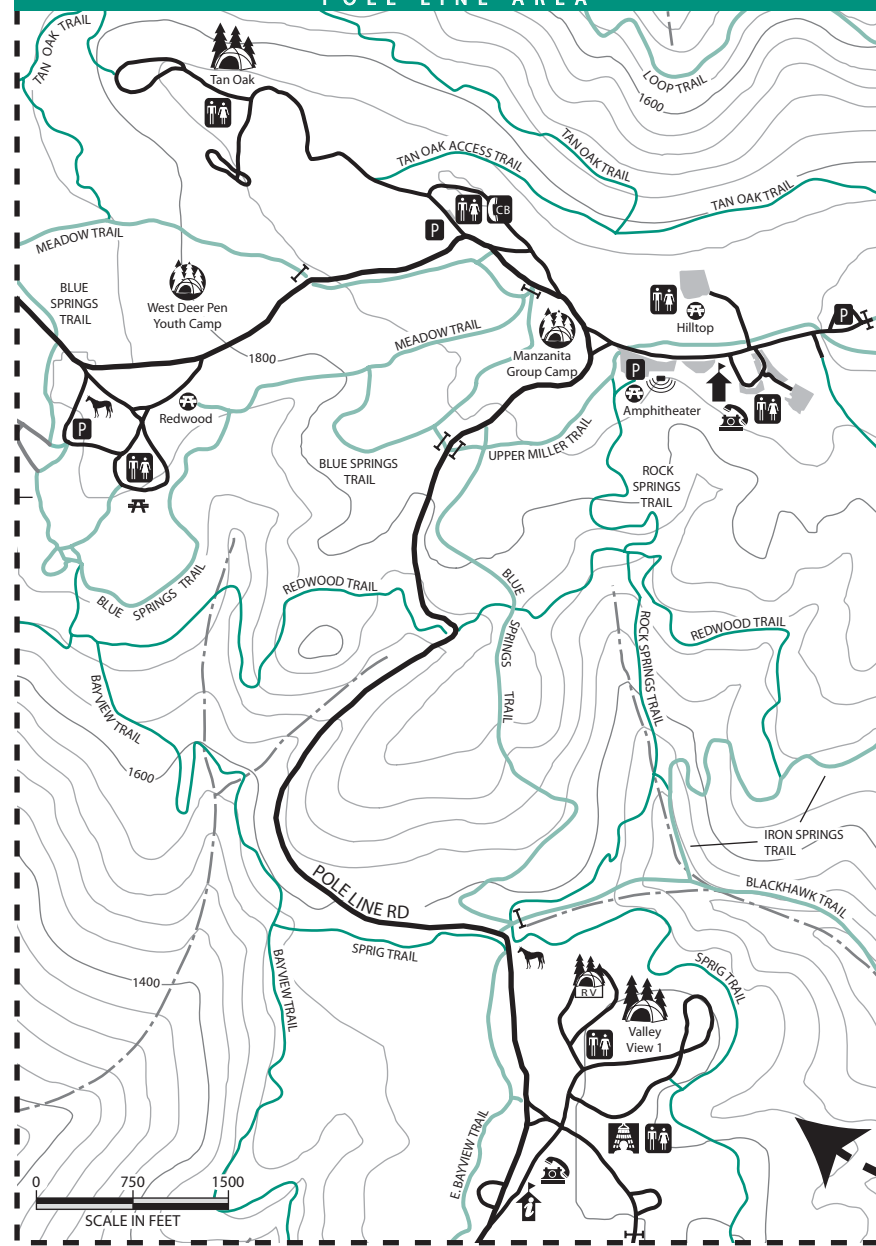


MT. MADONNA COUNTY PARK



POLE LINE AREA



LEGEND			
	Ranger Station/Visitor Center Phone: (408) 842-2341		Bay Area Ridge Trail
	Entrance Kiosk Phone: (408) 842-6761		Picnic Area
	Restrooms		Reserved Group Area
	Public Telephone		Campground
	Call Box		Reservable Campground
	Parking		Amphitheater
	No Parking		Equestrian Staging
	Private Property		Miller House Ruins
	Other Parks and Open Space		Gate
	Lands not open to Public		Showers
	Two Lane Paved Road		Elevation Contours (feet)
	Two Lane Park Road		Trail Distance (miles)
	Service Road		Creek
	Equestrian/Hiking		
	Footpath (hiking only)		
	Whole Access Trail		
	Nature Trail		

See Map at Left

BLACKHAWK TRAIL CLOSED INDEFINITELY BETWEEN CONTOUR AND RIDGE TRAILS DUE TO LANDSLIDE ACTIVITY

