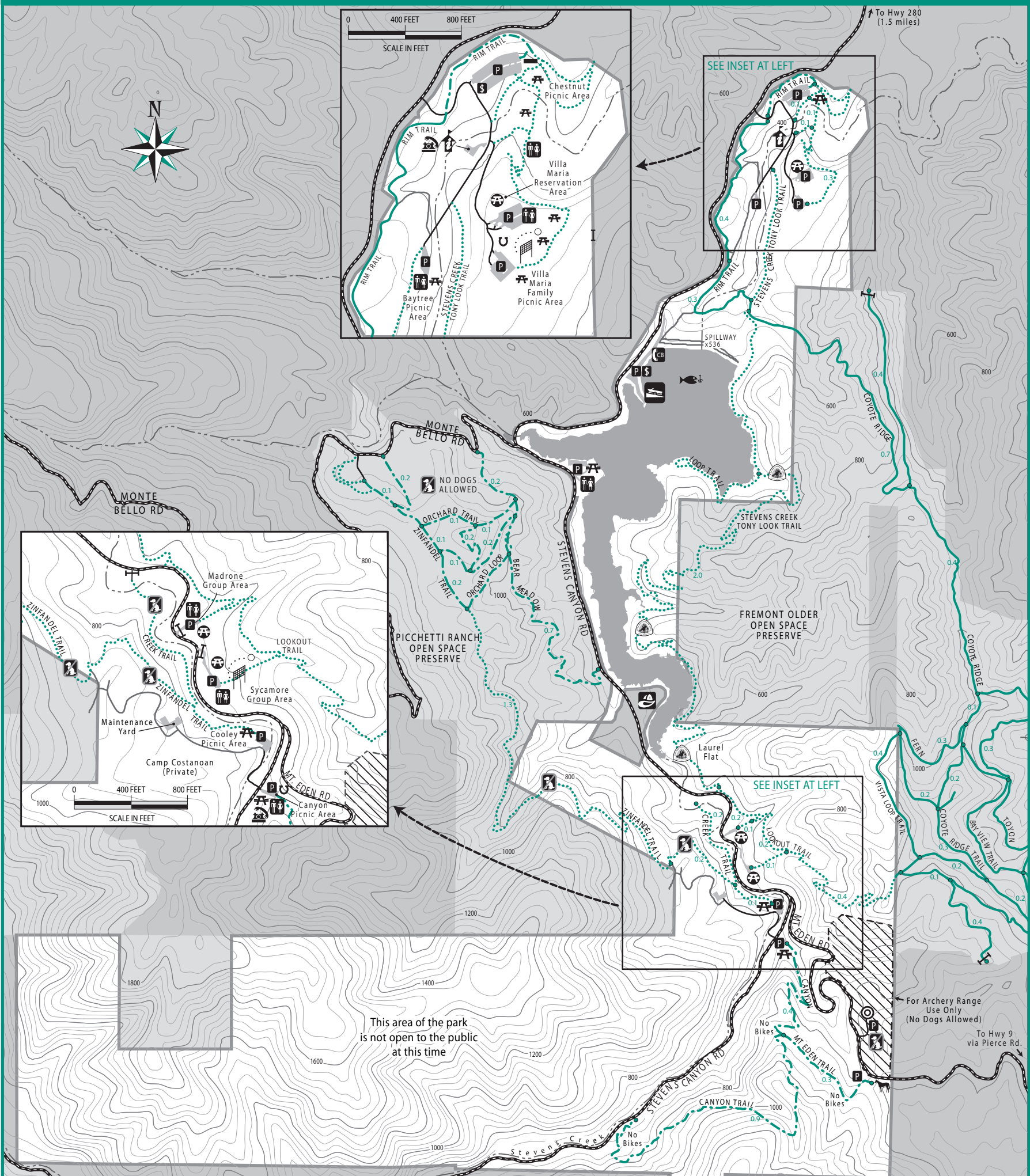
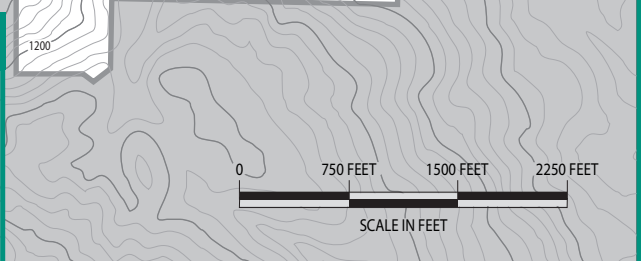
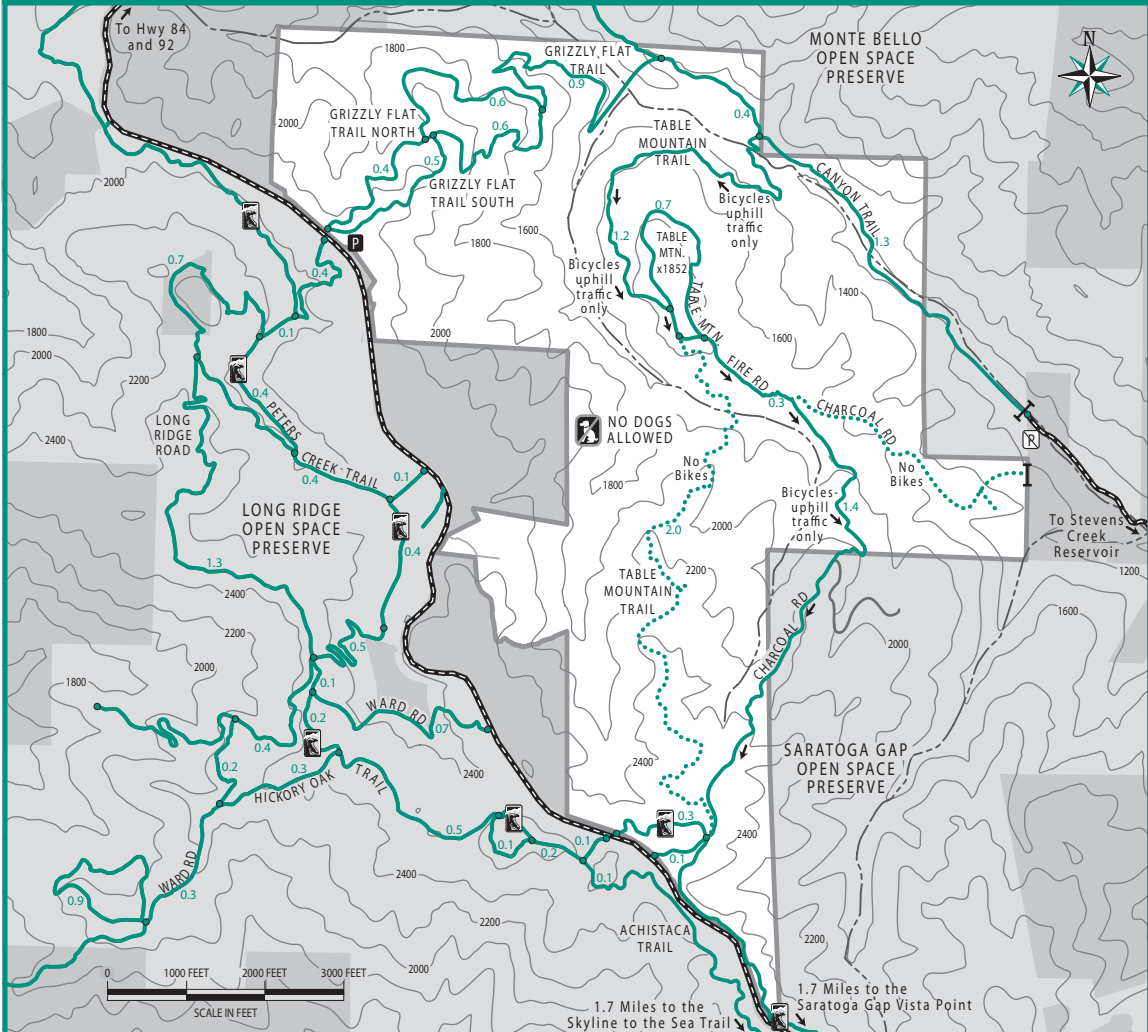


STEVENS CREEK COUNTY PARK



UPPER STEVENS CREEK COUNTY PARK



LEGEND	
	Ranger Station/Visitor Center Phone: (408) 867-3654
	Restrooms
	Public Telephone
	Call Box
	Parking
	No Parking
	Parking Fee Pay Station
	Picnic Area
	Reserved Group Area
	Equestrian Staging
	Water Trough
	Fishing
	No Dogs Allowed
	Archery Range
	Boat Launch
	Gate
	Two Lane Paved Road
	Two Lane Park Road
	Service Road
	Multiple Use Trails
	Equestrian/Hiking
	Footpath (hiking only)
	Elevation Contours (feet)
	Trail Distance (miles)
	Creek
	Private Property
	Mid-Peninsula Regional Open Space District
	Horseshoe Pit
	Volleyball
	Bay Area Ridge Trail (Upper Stevens Creek map)
	Juan Bautista de Anza (NHT)
	Fire Station (CAL FIRE)

STEVENS CREEK & UPPER STEVENS CREEK



SANTA CLARA COUNTY PARKS