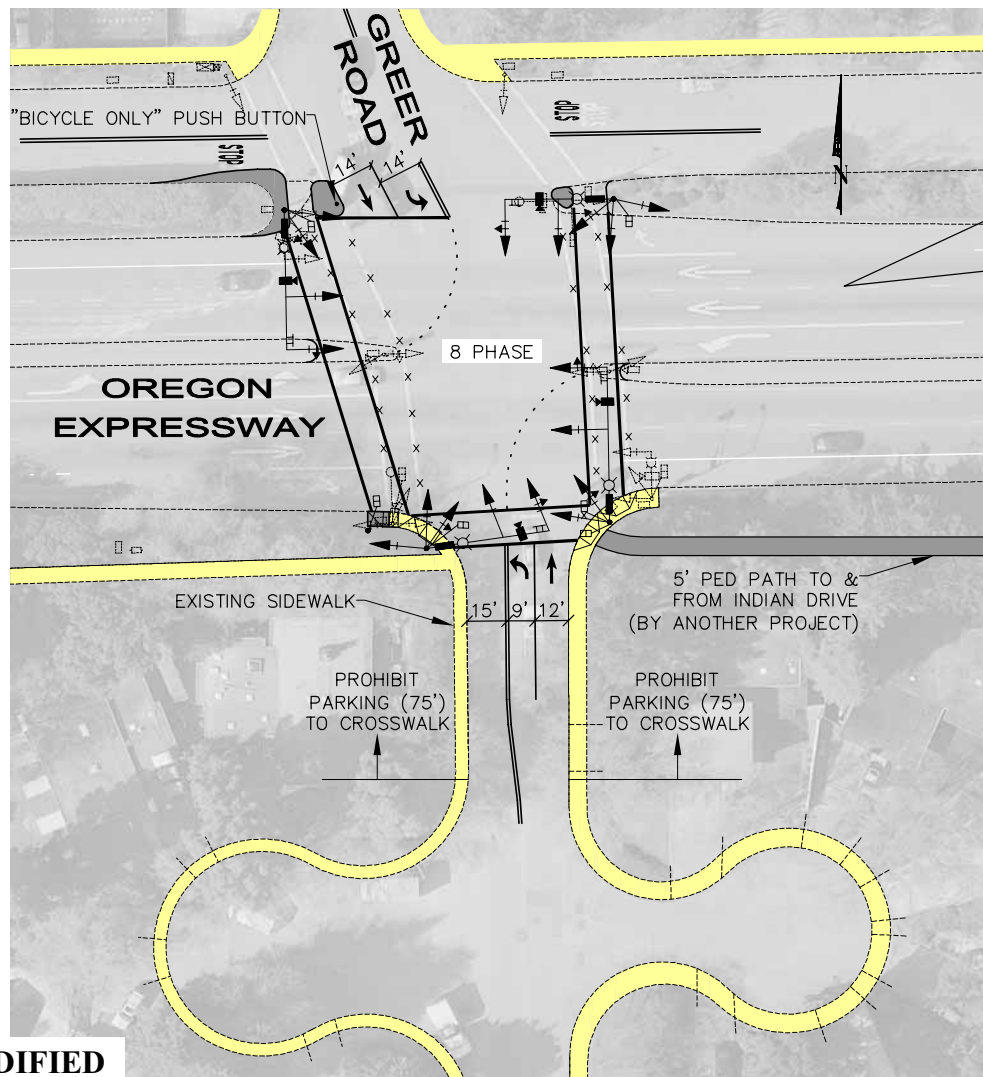


Proposed Conceptual Alternatives



Legend

- Proposed Sidewalk/Concrete Island
- Existing Sidewalk
- Remove Existing Striping
- Remove Existing Curb
- Existing Curb/Edge of Pavement
- Proposed Striping
- New/Enhanced Wheel Chair Ramp
- Proposed Signal Equipment
- Existing Signal Equipment

Pros

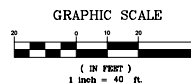
1. Enhanced pedestrian crossings with countdown signals
2. Left turns from both directions of Greer Rd. are served first followed by through movements
3. Eliminates conflicts between left turners and opposing through movements
4. Eliminates conflicts between left turn traffic and pedestrian/bicycle movements
5. Allows for more orderly flow of traffic in all directions
6. Improved signal displays
7. Straightened crosswalks
8. Separate left and through lanes
9. Intersection jog is reduced
10. Maintains two crosswalks to cross Oregon Expressway
11. New/Enhanced wheel chair ramps

Cons

1. Left turn or through traffic queue may occasionally exceed the short turn-pockets on Greer Rd. and block traffic
2. Parking to be prohibited for about 75 feet on both sides of Greer Rd. south of Oregon Expressway

County Recommended

Alternative 1 MODIFIED



County of Santa Clara Roads and Airports Dept.
Oregon Expressway Improvement Project

Oregon Expressway and Greer Road



Revised 1/29/09