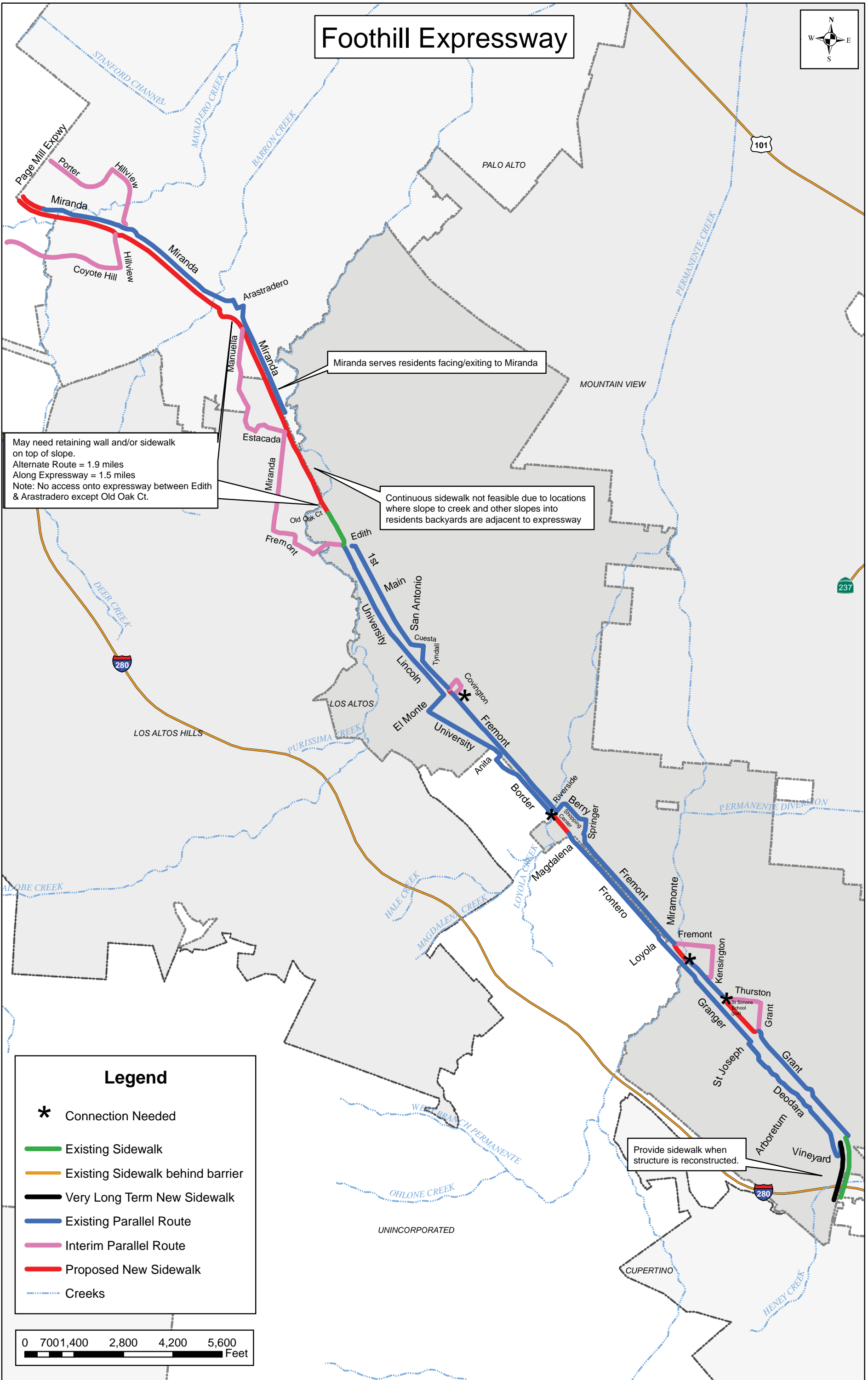


Foothill Expressway



May need retaining wall and/or sidewalk on top of slope.
 Alternate Route = 1.9 miles
 Along Expressway = 1.5 miles
 Note: No access onto expressway between Edith & Arastradero except Old Oak Ct.

Miranda serves residents facing/exiting to Miranda

Continuous sidewalk not feasible due to locations where slope to creek and other slopes into residents backyards are adjacent to expressway

Provide sidewalk when structure is reconstructed.

Legend

- * Connection Needed
- Existing Sidewalk
- Existing Sidewalk behind barrier
- Very Long Term New Sidewalk
- Existing Parallel Route
- Interim Parallel Route
- Proposed New Sidewalk
- Creeks

