

# Child Welfare Services Outcome and Accountability Quarterly Data Report

Submitted for  
Review  
August 27, 2013



July 2013

SANTA CLARA COUNTY



SOCIAL SERVICES AGENCY

**Prepared by:**

Lydia Romeo

Izi Chan

Evaluation and Planning  
Department of Administration and Operational Services  
Santa Clara County Social Services Agency

Wendy Kinnear-Rausch

Administration

Department of Family and Children's Services

**Contact:**

Lydia Romeo  
Evaluation and Planning Manager  
(408) 755-7772

## EXECUTIVE SUMMARY

The Child Welfare Outcome and Accountability Report for July 2013 covers quarter three of 2013 and provides a quarterly update on progress toward continuous child welfare improvements for the Santa Clara County Department of Family and Children's Services (SCC DFCS) in meeting System Improvement Goals. The report presents both Federal and State indicators. Federal performance data are largely based on a 12-month rolling period, which is April 2012 to March 2013 for this current report; whereas State measures are based on January to March 2013 data.

Tracking the County's performance on these indicators is mandated to ensure the County is meeting State and Federal indicators as noted in the County's System Improvement Plan. Further, tracking is important as the State faces potential financial sanctions for failure to demonstrate improvement.<sup>1</sup> The standards for the federal indicators were set according to states' performance in 2004 at the 75 percentile, challenging states to meet or exceed these national standards. In addition to the federal indicators, the California Department of Social Services, UC Berkeley, and counties continue to revise the methodology for State-specific indicators and continue to add more robust indicators (e.g., placement stability using entry cohorts). The Center for Social Services Research, UCB, which manages the data, is speeding up the reporting, which will allow for more timely data on progress. However, the reader should be aware that some indicators require a longer window of review (e.g., entry cohort indicators).

## SUMMARY OF FINDINGS

The current report finds both important improvements as well as challenges across child outcomes and social work performance measures. Contrary to the decreasing trend in the last three years, rates for referrals, substantiations and entries into care increased slightly in 2012. The overall performance in Child Safety and four of the composite measures (specifically Reunification, Adoption, Long Term Care and Placement Stability) improved. The County met three of the four national goals established for the composite indicators. The slight weakening in the Long Term Care composite rendered the County 2.3 points below the national goal. The best performance continues to rest in the reunification composite. The County has succeeded in shortening the Median Time to Reunification; however, the Re-entry Rate following Reunification has ample room for improvement.

Another achievement is noted in the Adoption composite, which, historically, has been an area of challenge, however, this quarter the County met the national goal for this composite for three consecutive quarters. The improvements are in adoptions within 24 months, adoptions within 12 months for children who are legally free, and the median time for adoptions has shortened. However, there is persistent challenge in meeting the national goals for children in care longer (17 months), specifically legally freeing them for adoption within 6 months and finalizing their adoptions within 12 months. These two indicators are furthest from the national goals than any other indicators.

Consistent improvement is shown in the Placement Stability composite, surpassing the national goal. The County maintains positive placement stability performance, specifically for children in care up to 24 months. However, there is room for improvement for children in care longer than 24 months.

The County's performance in the Long Term Care composite trails behind the composites for Reunification, Adoption and Placement Stability. Specifically, improvements are needed for children in long term care (24 months) exiting to permanency and reducing the rate of children in care 3 years or longer who exit care by emancipation or reach the age of 21.

---

<sup>1</sup> See ACL 00-25, which references: Department of Health and Human Services, Administration for Children and Families (2000). 45 CFR Parts 1355, 1356 and 1357. *Federal Register*, 65(16), 4020-4093.

This report also includes the two additional federal measures: Timely Monthly Social Worker Visits with Child and Timely Monthly Social Worker Visits with Child in Residence. The goal for timely social worker visits is 90% or greater. As of this report, there is no goal established for visits in residence. The County met the standard for overall timely social worker visits this quarter.

Compared to the last reporting period, of the 18 federal measures with national standards, the County made improvements on 10, while performance weakened on 7 measures and there was no change for one measure. Currently, the County meets eight goals of the 18 federal measures. Due to the weight distribution of principal measures, credit is given to performance exceeding the goals, thus the County met three of the four federal composites.

In contrast, the County did not perform as well on the State measures. Performance declined in Timely Immediate Response, Timely Ten-Day Response, and Timely Dental and Medical Exams for children in care. The timely immediate responses rate fell below the 95% state goal for the first time since 2007. Ten-day responses continued a downward trend, well below the goal.

A robust SCC System Improvement Plan (SIP) was developed and approved on February 28, 2013 to ensure improvements on several State and Federal through specific goals over the next five years. These goals and corresponding target indicators are described in the *Introduction* section of the report (See p.1).

Notable improvements and challenges are highlighted in the next section.

## IMPROVEMENTS

### Child Safety: “Children are first and foremost protected from abuse and neglect.”

- **Children receive timely visits from social workers.** Social workers continue to visit children timely. Timely visits historically have **been strong and continue to exceed** the new federal goal of 90 percent or greater. In addition, a preliminary review of the new goal of social workers visiting children in placement illustrates that SCC is also set to meet this goal for child welfare cases. Further program changes for Juvenile Probation will be necessary to meet the goal for probation youth in out of home placement.

### Permanency and Stability: “Children have permanency and stability in their living situations without increasing entry into foster care.”

#### Timeliness and Permanency of Reunification

- **Children experience timely reunifications.** The **median time to reunification has been significantly shortened- exceeding the national goal for over two years.** Reunification within 12 months (entry cohort) also improved. These two measures surpassed the national goal. Reunifications within 12 months (exit cohort) improved, to only 3 percent below the national goal. The County continues to exceed the reunification composite national goal, maintaining its strong reunification performance compared to the other composites.

#### Timeliness to Adoption

- **Children legally free for adoption experience timely adoptions.** Santa Clara County **continues to show improvement** in adoption efforts. This quarter the County **met the national goal in the adoption composite consecutively for the third time since 2002.**

Improvements were achieved in two of the five adoption measures. The rate for finalizing adoptions within 24 months increased to 37.1 percent, meeting the goal for the first time since 2002. The median time to adoption decreased again to 28.6 months, which is one month short of the national goal.

#### Permanency for Children in Long-term Care

- **More children experience exits to permanent homes.** The effect the Department's *new policies and procedures* implemented in 2010, which emphasized permanency and concurrent planning has likely *contributed to the substantial improvement* in this composite. Although, *last quarter, the County met the permanency composite score for the first time since 2002, this quarter, there is a slight regression, as a result*, the permanency composite score fell 2 points below the national goal. However, *improvement was achieved in reducing the rate of children in care 3 years or longer who exited care by emancipation or reached the age of majority of 21.*

#### Placement Stability

- **Children experience more stability in foster care for longer periods.** Consistent effort in placement stability has produced a composite score *exceeding the national goal for two consecutive quarters.* Placement stability limits the number of placements for children in care to two or less. The County exceeded the target rate of 86 percent for children who stayed 8 days but less than a year. In addition, the County exceeded the target rate of 65.4 percent for children who stayed for 1 year but within two years. As mentioned in previous reports, the impact of closing the Children's Shelter and the subsequent opening of the Receiving, Assessment and Intake Center (RAIC, October 1, 2009), appears to have had a positive impact on children's stability in foster care. However, the placement stability goal for children in care for more than two years has yet to be achieved, this quarter there is improvement, bringing the target goal three percent closer.

**Child and Family Well-being: "The family relationships and connections of children will be preserved, as appropriate."**

- **Most children are placed with some or all of their siblings.** The *majority of children* in foster care are *placed with some or all of their siblings (70.8%)*, preserving what are typically very strong family connections. *Fifty-three percent* of children are *placed together with all their siblings.*

### CHALLENGES

Performance challenges reflected in this section of this report include Federal and State measures. Although there has been improvement on the Federal measures, 10 of the 18 national goals have not been achieved. Specific challenge areas include: recurrence of maltreatment; reunification in less than 12 months; re-entry into care within 12 months of reunification; legally freeing children within 6 months and finalizing adoptions for children in care 17 months; permanency for children in long-term foster care; and placement stability for children in care for 24 months or longer. State performance challenges include ten-day responses to child abuse and neglect referrals, and timely medical and dental exams.

In the last two quarters the County has been an upward trend in preventing recurrence of maltreatment within six months of a prior substantiation, however the County is still slightly below the national goal of 94.6 percent at 92.6 percent (See S1, p. 8). Challenges during this review period are high number of

vacancies in DFCS and the struggles to fill positions and the need to ensure a competitive process to increase access to Differential Response.

Increased resources in the Front End for Emergency Response ensuring staff vacancies are filled as a priority so that timely referrals and complete assessments for families can be completed are a Department priority and ensuring the necessary funding for Differential Response, especially for African Ancestry and Latino families, so that family stressors can be addressed and families stabilized to prevent re-referrals.

Despite these efforts, there is a wait list for Differential Response and the need to serve additional families, as well as the need to continue to ensure the appropriate staffing volume in Emergency Response to handle the referrals. Both if these items are a Department SIP goal and strategies will be employed over the next two quarters to achieve increased ability to serve families through Differential Response and adequate staffing in ER with all staff vacancies filled at a high priority. There are currently only 5 vacancies to date in Emergency Response, less than one third as of a year ago. In addition, SCC has begun the necessary steps to ensure a competitive process to add additional resources to Differential Response with particular attention to Latino and African Ancestry families, as well as Vietnamese families. It is anticipated the increased resources will be available within the next year through Child Welfare Realignment growth funding.

Performance in the area of reunification within 12 months has been below the national goal of 75.2 percent or greater for about a year. The present rate is 72.2 percent and the goal is to increase for greater numbers of families reunifying within 12 months. This measure has been steadily improving over time and SIP goals of California Partners for Permanency (CAPP) is aimed better engagement and support for families and children to ensure successful timely reunification.

Re-entry within 12 months of reunification has been an area of persistent challenge for an extended period, the current rate of 12.6 percent does not meet the national goal of 9.9 percent or lower. Further analysis of the necessary supports for families once reunification has been completed is in process, along with increased resources for Differential Response Path IV to support families after they reunify.

- As mentioned in the improvement section, performance has significantly improved for adoptions within 24 months and the median time to adoption has shortened. However, the main challenge area is for children in care 17 months and timely freeing and finalizing their adoptions. This is SIP improvement strategy area and additional analysis is currently underway on how to improve timely adoptions within the 24 month timeline.

The permanency exit trend for children in long-term care continues to be weak, below the national goal for children in care 24 months or longer and for those children who were in care three years or longer who exited to emancipation or turned 18 years of age. It is important to note that the methodology for this measure requires a case to achieve guardianship or adoption and to close out of the foster care system. In Santa Clara County, families may choose to continue child welfare support services, which may influence achieving the national goal for this measure. SCC is expected to continue to improve in placement stability as more children remain in two or fewer placements. This outcome measure is not met for the life of a case for a child in care. Therefore, it is anticipated that as placement stability continues to improve for children and youth for under 24 months, SCC will continue to increase in this performance measure.

Performance in limiting placements to two or less for children in care 24 months made steady improvement during the six quarters, however performance remains below the national goal.

The County's performance on ten-day responses has not met the State goal of 95 percent or more during the last nine quarters, ultimately plunging to 81.7 percent this quarter. Although, the immediate response performance had met the State goal historically, performance this quarter fell to 94.3 percent, below the State target of 95 percent or more. SCC is in the process of analyzing the slipping improvement in this area. Preliminarily, this appears to be tied to timeliness of paperwork and data entry a plan of correction is currently being implemented. In addition, lack of staff in the front end over the last year may also have played a role in the decreased improvement in this area.

Timely dental and medical exams for all children have continued to trend downward, performing below the 100 percent State goal. SIP strategies aimed at increased partnerships with Public Health and the need to better identify medical and dental resources are expected increase performance in this outcome measures.

## Table of Contents

INTRODUCTION.....	1
SCC Child Welfare Improvement Efforts .....	1
Structure and Methodology .....	3
SANTA CLARA COUNTY CHILD WELAFARE QUARTERLY DASHBOARD.....	4
HISTORICAL DATA CHARTS AND RACE/ETHNICITY TABLES.....	7
Participation Rates .....	7
Child Safety.....	8
Timeliness and Permanency of Reunification.....	11
Timeliness to Adoption.....	14
Permanency for Children in Long-term Care .....	17
Placement Stability.....	19
Child and Family Well-being.....	21
Child Health Well-being.....	23



## INTRODUCTION

The Child Welfare Outcomes and Accountability Report provides a quarterly update on SCC's progress toward continuous child welfare improvements.<sup>2 3</sup> The Outcomes and Accountability Report is also a tool to help guide management actions. Through dialogue with DFCS and other Agency stakeholders, the report may help elicit analytic questions to better understand and continue to improve outcomes and performance, as appropriate.

### SCC Child Welfare Improvement Efforts

The 2012 System Improvement Plan highlights several goals and strategies to improve child and family outcomes that reflect both internal and State priorities. Concrete and measurable actions will be used to allow supervisors, managers, and administrators to track implementation success and how these relate to children's safety, permanency and stability, and well-being and permanency efforts. Santa Clara County has completed a robust Systems Improvement Plan aimed at high achievement goals in the following areas. A review team will provide the necessary oversight for improvement in SIP focus areas.

1. Address and eliminate the over representation of African Ancestry and Latino families, as defined as "Within five years African Ancestry and Latino children will be no more likely than other children given the same risk or protective capacity factors, to enter the child welfare caseload or to exit the child welfare system".
  - a. Complete a full analysis to better understand factors related to the under representation for Asian American families by looking at each individual Asian cultural group represented in Santa Clara County and then work closely with those API groups to appropriately address those factors.
  - Reducing disproportionality is the top priority and major concern for the Agency. This will be accomplished through actions steps aimed at the following:
    - Revised Mandated training
    - Increases in Differential Response
    - Increases in parenting classes (In-home classes and language specific classes)
    - Address poverty and economic needs for families
    - Better utilization of Family Resource Centers
  - First entry into care (see p. 7)
  - C1.4 Re-entry following reunification (see p. 13)
2. **Improve the safety of children by** addressing safety, ensuring that children and families are assessed in a timely manner and those families are provided the necessary resources and supports so that children do not enter the children welfare system or re-enter the child welfare system. Safety Measures are tracked through the following:

---

<sup>2</sup> State Accountability Act, Assembly Bill (AB) 636, California-Children & Family Services Review, 2001.

<sup>3</sup> Administration for Children and Family Services, Department of Health and Human Services (2006). The data indicators, data composites and National standards to be used in the Child and Family Services Reviews. Federal Register (71)109, 32969-32987.

- S1 No recurrence of maltreatment (see p. 8)
- Re-Entry Outcome Measure

This will be accomplished through a partnership with the community to enhance community resources that better meet the evolving needs of families.

3. **Permanency:** Addressing permanency for children and families as defined by ensuring family reunification or children returning to live with one or both parents, or if this is not possible placement with relatives or non-relatives in a guardianship or adoption situation.

Permanency Measures are tracked through the following:

#### C1.3 Reunification, entry cohort (see p. 12)

- C4.1 Placement stability, 8 days to 12 months in care (see p. 19)
  - C3.1 Exits to Permanency (24 months in care). Of all children in foster care for 24 months or longer on the first day of the year, what percent were discharged to a permanent home by the end of the year and prior to turning 18?

This will be accomplished through a focus on the following:

- Family Finding
- Increased visits between parents and children
- Engagement with parents/fathers
- Trauma focused training
- Increase in support for educational and mental health well-being

This measure is tracked by the following:

- C2.3 Adoption within 12 months of being in care for 17 months or longer (see p. 15)
- C2.5 Adoption within 12 months of becoming legally free for adoption (see p. 16)

## Structure and Methodology

To report on child welfare outcomes and performance, the report is divided into two sections:

In the first section, the Santa Clara County Child Welfare Quarterly Dashboard presents trend performance data for Federal and State indicators with goals. To gauge performance over time, three presentations are made available. First, a trend chart depicts actual performance set against the goal. Secondly, actual performance is presented in a table format across time. Thirdly, relative performance to the goal is provided across time and is color coded to quickly assess distance from actual performance to the goal. When the goal is achieved or exceeded, the corresponding cell is shaded light green with a bright green circle in the center. When the goal is within 90 percent of the goal, the corresponding cell is shaded light yellow with an orange diamond in the center. Finally, when the percent achieved is less than 90 percent, the corresponding cell is shaded light gray with a bright red square in the center.

The second section shows trend charts that reviews SCC and California trend lines. A table shows improvement by race/ethnicity by comparison current performance against the same period, a year prior.

Three main methods are used to report on child welfare outcomes and performance. First, entry cohort indicators assess *all* children's experiences longitudinally. This method provides a more comprehensive understanding of children's experiences in the child welfare system. Second, exit cohort indicators assess children's experiences as they exit the child welfare system. Third, median time is used to assess the time that it takes to reunification or adoption.

To evaluate performance:

- All federal indicators/composites are compared against national standards or goals.
- Present performance is compared to last year's performance.
- Select charts compare SCC against Statewide performance.<sup>4</sup>

Data used in the present report was provided by the Center for Social Sciences Research, UC Berkeley.<sup>5</sup>

---

<sup>4</sup> Caution is advised for indicators or descriptive categories with statistically small numbers (e.g., maltreatment in foster care, Native Americans receiving child welfare services).

<sup>5</sup> To learn more about California child welfare performance data, visit <http://cssr.berkeley.edu/CWSCMSreports>.

# SANTA CLARA COUNTY CHILD WELFARE QUARTERLY DASHBOARD

## Child Safety, Permanency and Stability Indicators with Standards

July 2013 Report

Legend	abbreviations	EG = Equal or Greater than	EL = Equal or Less than	LT = Less than
	level achieved	● GOAL ACHIEVED	◆ Goal achieved EG 90 %	■ Goal achieved LT 90%

### Child Safety

<b>S1. Absence of recurrence of maltreatment</b> Goal EG 94.6 / Performance Relative performance to goal	<table border="1"> <tr><th>Apr11-Sep11</th><th>Jul11-Dec11</th><th>Oct11-Mar12</th><th>Jan12-Jun12</th><th>Apr12-Sep12</th></tr> <tr><td>91.9</td><td>90.8</td><td>89.5</td><td>91.4</td><td>92.6</td></tr> <tr><td>0.97</td><td>0.96</td><td>0.95</td><td>0.97</td><td>0.98</td></tr> <tr><td>◆</td><td>◆</td><td>◆</td><td>◆</td><td>◆</td></tr> </table>	Apr11-Sep11	Jul11-Dec11	Oct11-Mar12	Jan12-Jun12	Apr12-Sep12	91.9	90.8	89.5	91.4	92.6	0.97	0.96	0.95	0.97	0.98	◆	◆	◆	◆	◆	
Apr11-Sep11	Jul11-Dec11	Oct11-Mar12	Jan12-Jun12	Apr12-Sep12																		
91.9	90.8	89.5	91.4	92.6																		
0.97	0.96	0.95	0.97	0.98																		
◆	◆	◆	◆	◆																		
<b>S2. Absence of abuse in foster care</b> Goal EG 99.7 / Performance Relative performance to goal	<table border="1"> <tr><th>Apr11-Mar12</th><th>Jul11-Jun12</th><th>Oct11-Sep12</th><th>Jan12-Dec12</th><th>Apr12-Mar13</th></tr> <tr><td>99.16</td><td>99.29</td><td>99.53</td><td>99.60</td><td>99.72</td></tr> <tr><td>0.995</td><td>0.996</td><td>0.998</td><td>0.999</td><td>1.000</td></tr> <tr><td>◆</td><td>◆</td><td>◆</td><td>◆</td><td>●</td></tr> </table>	Apr11-Mar12	Jul11-Jun12	Oct11-Sep12	Jan12-Dec12	Apr12-Mar13	99.16	99.29	99.53	99.60	99.72	0.995	0.996	0.998	0.999	1.000	◆	◆	◆	◆	●	
Apr11-Mar12	Jul11-Jun12	Oct11-Sep12	Jan12-Dec12	Apr12-Mar13																		
99.16	99.29	99.53	99.60	99.72																		
0.995	0.996	0.998	0.999	1.000																		
◆	◆	◆	◆	●																		
<b>2B. Timely response to immediate response referrals</b> Goal EG 95.0 / Performance Relative performance to goal	<table border="1"> <tr><th>Jan12-Mar12</th><th>Apr12-Jun12</th><th>Jul12-Sep12</th><th>Oct12-Dec12</th><th>Jan13-Mar13</th></tr> <tr><td>97.8</td><td>98.6</td><td>95.9</td><td>97.2</td><td>94.3</td></tr> <tr><td>1.03</td><td>1.04</td><td>1.01</td><td>1.02</td><td>0.99</td></tr> <tr><td>●</td><td>●</td><td>●</td><td>●</td><td>◆</td></tr> </table>	Jan12-Mar12	Apr12-Jun12	Jul12-Sep12	Oct12-Dec12	Jan13-Mar13	97.8	98.6	95.9	97.2	94.3	1.03	1.04	1.01	1.02	0.99	●	●	●	●	◆	
Jan12-Mar12	Apr12-Jun12	Jul12-Sep12	Oct12-Dec12	Jan13-Mar13																		
97.8	98.6	95.9	97.2	94.3																		
1.03	1.04	1.01	1.02	0.99																		
●	●	●	●	◆																		
<b>2B. Timely response to 10-day referrals</b> Goal EG 95.0 / Performance Relative performance to goal	<table border="1"> <tr><th>Jan12-Mar12</th><th>Apr12-Jun12</th><th>Jul12-Sep12</th><th>Oct12-Dec12</th><th>Jan13-Mar13</th></tr> <tr><td>92.3</td><td>90.2</td><td>90.7</td><td>85.3</td><td>81.7</td></tr> <tr><td>0.97</td><td>0.95</td><td>0.95</td><td>0.90</td><td>0.86</td></tr> <tr><td>◆</td><td>◆</td><td>◆</td><td>◆</td><td>■</td></tr> </table>	Jan12-Mar12	Apr12-Jun12	Jul12-Sep12	Oct12-Dec12	Jan13-Mar13	92.3	90.2	90.7	85.3	81.7	0.97	0.95	0.95	0.90	0.86	◆	◆	◆	◆	■	
Jan12-Mar12	Apr12-Jun12	Jul12-Sep12	Oct12-Dec12	Jan13-Mar13																		
92.3	90.2	90.7	85.3	81.7																		
0.97	0.95	0.95	0.90	0.86																		
◆	◆	◆	◆	■																		
<b>2F.1. Timely social worker visits</b> Goal EG 90.0 / Performance Relative performance to goal	<table border="1"> <tr><th>Jan12-Mar12</th><th>Apr12-Jun12</th><th>Jul12-Sep12</th><th>Oct12-Dec12</th><th>Jan13-Mar13</th></tr> <tr><td>91.1</td><td>91.6</td><td>91.8</td><td>91.7</td><td>91.1</td></tr> <tr><td>1.01</td><td>1.02</td><td>1.02</td><td>1.02</td><td>1.01</td></tr> <tr><td>●</td><td>●</td><td>●</td><td>●</td><td>●</td></tr> </table>	Jan12-Mar12	Apr12-Jun12	Jul12-Sep12	Oct12-Dec12	Jan13-Mar13	91.1	91.6	91.8	91.7	91.1	1.01	1.02	1.02	1.02	1.01	●	●	●	●	●	
Jan12-Mar12	Apr12-Jun12	Jul12-Sep12	Oct12-Dec12	Jan13-Mar13																		
91.1	91.6	91.8	91.7	91.1																		
1.01	1.02	1.02	1.02	1.01																		
●	●	●	●	●																		

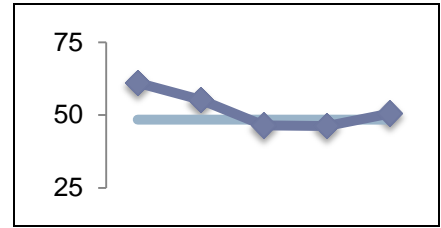
### Timeliness of Family Reunification and Permanency of Reunification

<b>C1.1. Reunification within 12 months for children exiting care</b> Goal EG 75.2 / Performance Relative performance to goal	<table border="1"> <tr><th>Apr11-Mar12</th><th>Jul11-Jun12</th><th>Oct11-Sep12</th><th>Jan12-Dec12</th><th>Apr12-Mar13</th></tr> <tr><td>77.8</td><td>73.7</td><td>74.3</td><td>70.9</td><td>72.2</td></tr> <tr><td>1.03</td><td>0.98</td><td>0.99</td><td>0.94</td><td>0.96</td></tr> <tr><td>●</td><td>◆</td><td>◆</td><td>◆</td><td>◆</td></tr> </table>	Apr11-Mar12	Jul11-Jun12	Oct11-Sep12	Jan12-Dec12	Apr12-Mar13	77.8	73.7	74.3	70.9	72.2	1.03	0.98	0.99	0.94	0.96	●	◆	◆	◆	◆	
Apr11-Mar12	Jul11-Jun12	Oct11-Sep12	Jan12-Dec12	Apr12-Mar13																		
77.8	73.7	74.3	70.9	72.2																		
1.03	0.98	0.99	0.94	0.96																		
●	◆	◆	◆	◆																		
<b>C1.2. Median time to reunification</b> Goal EL 5.4 months/ Performance Relative performance to goal	<table border="1"> <tr><th>Apr11-Mar12</th><th>Jul11-Jun12</th><th>Oct11-Sep12</th><th>Jan12-Dec12</th><th>Apr12-Mar13</th></tr> <tr><td>3.3</td><td>3.5</td><td>3.9</td><td>4.3</td><td>4.1</td></tr> <tr><td>1.64</td><td>1.54</td><td>1.38</td><td>1.26</td><td>1.32</td></tr> <tr><td>●</td><td>●</td><td>●</td><td>●</td><td>●</td></tr> </table>	Apr11-Mar12	Jul11-Jun12	Oct11-Sep12	Jan12-Dec12	Apr12-Mar13	3.3	3.5	3.9	4.3	4.1	1.64	1.54	1.38	1.26	1.32	●	●	●	●	●	
Apr11-Mar12	Jul11-Jun12	Oct11-Sep12	Jan12-Dec12	Apr12-Mar13																		
3.3	3.5	3.9	4.3	4.1																		
1.64	1.54	1.38	1.26	1.32																		
●	●	●	●	●																		

**C1.3. Reunification within 12 months for a cohort of children entering care**

Goal EG 48.4 / Performance  
Relative performance to goal

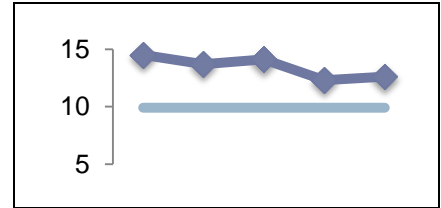
Oct10-Mar11	Jan11-Jun11	Apr11-Sep11	Jul11-Dec11	Oct11-Mar12
61.1	55.3	46.5	46.2	50.5
1.26	1.14	0.96	0.95	1.04
●	●	●	◆	●



**C1.4. Re-entry into foster care within 12 months from reunification**

Goal EL 9.9 / Performance  
Relative performance to goal

Apr10-Mar11	Jul10-Jun11	Oct10-Sep11	Jan11-Dec11	Apr11-Mar12
14.5	13.7	14.1	12.3	12.6
0.68	0.72	0.70	0.80	0.79
■	■	■	■	■

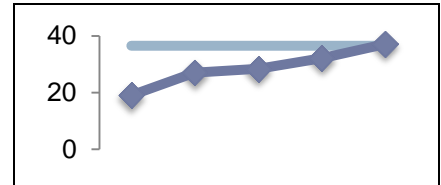


**Timeliness to Adoption**

**C2.1. Adoption within 24 months for children exiting to adoption**

Goal EG 36.6 / Performance  
Relative performance to goal

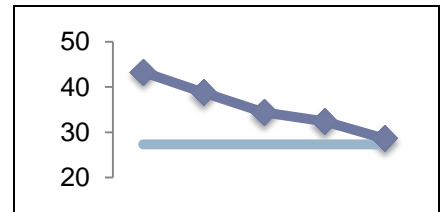
Apr11-Mar12	Jul11-Jun12	Oct11-Sep12	Jan12-Dec12	Apr12-Mar13
19.0	27.1	28.4	32.2	37.1
0.52	0.74	0.78	0.88	1.01
■	■	■	■	●



**C2.2. Median time to adoption**

Goal EL 27.3 months / Performance  
Relative performance to goal

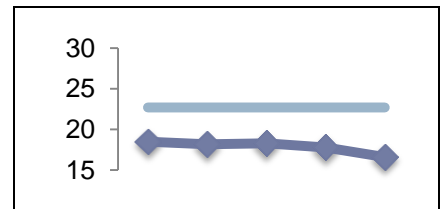
Apr11-Mar12	Jul11-Jun12	Oct11-Sep12	Jan12-Dec12	Apr12-Mar13
43.3	38.8	34.4	32.4	28.6
0.63	0.70	0.79	0.84	0.95
■	■	■	■	◆



**C2.3. Adoption within 12 months for children in care 17 months or longer**

Goal EG 22.7 / Performance  
Relative performance to goal

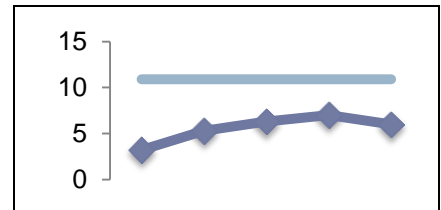
Apr11-Mar12	Jul11-Jun12	Oct11-Sep12	Jan12-Dec12	Apr12-Mar13
18.5	18.2	18.3	17.8	16.6
0.81	0.80	0.81	0.78	0.73
■	■	■	■	■



**C2.4. Legally free within 6 months for children in care 17 months or longer**

Goal EG 10.9 / Performance  
Relative performance to goal

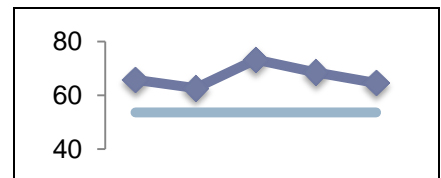
Apr11-Sep11	Jul11-Dec11	Oct11-Mar12	Jan12-Jun12	Apr12-Sep12
3.2	5.3	6.3	7.0	6.0
0.29	0.49	0.58	0.64	0.55
■	■	■	■	■



**C2.5. Adoption within 12 months after being legally freed**

Goal EG 53.7 / Performance  
Relative performance to goal

Apr10-Mar11	Jul10-Jun11	Oct10-Sep11	Jan11-Dec11	Apr11-Mar12
65.8	62.7	73.3	68.6	64.6
1.23	1.17	1.36	1.28	1.20
●	●	●	●	●

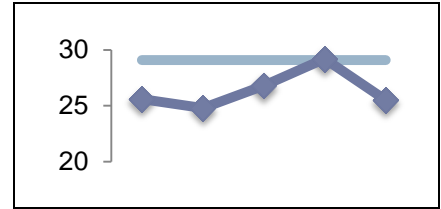


## Permanency for Children in Long-term Care

### C3.1. Exits to permanency for children in care 24 months or longer

Goal EG 29.1 / Performance  
Relative performance to goal

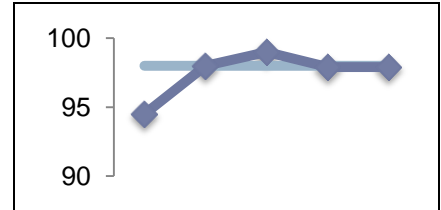
Apr11-Mar12	Jul11-Jun12	Oct11-Sep12	Jan12-Dec12	Apr12-Mar13
25.6	24.8	26.8	29.2	25.5
0.88	0.85	0.92	1.00	0.88
■	■	◆	●	■



### C3.2. Exits to permanency for children exiting foster care and who were legally free for adoption

Goal EG 98.0 / Performance  
Relative performance to goal

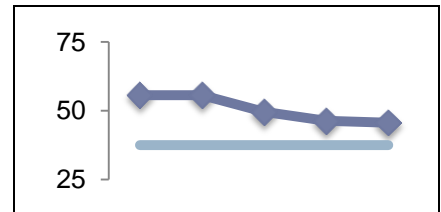
Apr11-Mar12	Jul11-Jun12	Oct11-Sep12	Jan12-Dec12	Apr12-Mar13
94.5	98.0	99.0	97.9	97.9
0.96	1.00	1.01	0.999	0.999
◆	●	●	◆	◆



### C3.3. Exits due to emancipation or age of majority and in care 3 years or longer

Goal EL 37.5 / Performance  
Relative performance to goal

Apr11-Mar12	Jul11-Jun12	Oct11-Sep12	Jan12-Dec12	Apr12-Mar13
55.7	55.7	49.6	46.4	45.7
0.67	0.67	0.76	0.81	0.82
■	■	■	■	■

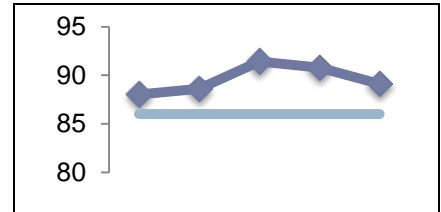


## Placement Stability

### C4.1. Children with two or fewer placements, in care between 8 days and 11 months

Goal EG 86.0 / Performance  
Relative performance to goal

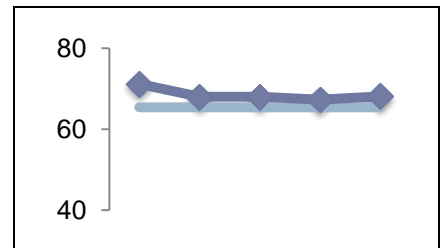
Apr11-Mar12	Jul11-Jun12	Oct11-Sep12	Jan12-Dec12	Apr12-Mar13
88.0	88.6	91.4	90.8	89.1
1.02	1.03	1.06	1.06	1.04
●	●	●	●	●



### C4.2. Children with two or fewer placements in the life of their case, in care between 12 months and 23 months

Goal EG 65.4 / Performance  
Relative performance to goal

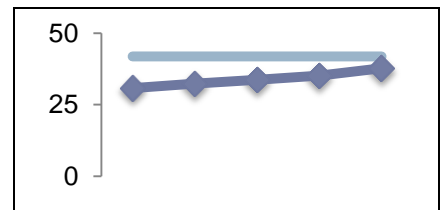
Apr11-Mar12	Jul11-Jun12	Oct11-Sep12	Jan12-Dec12	Apr12-Mar13
71.2	68.0	68.0	67.3	68.1
1.09	1.04	1.04	1.03	1.04
●	●	●	●	●



### C4.3. Children with two or fewer placements in the life of their case, in care at least 24 months

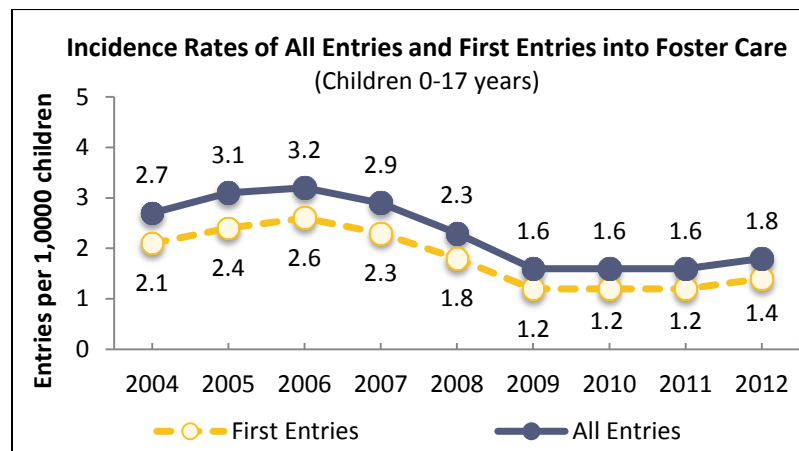
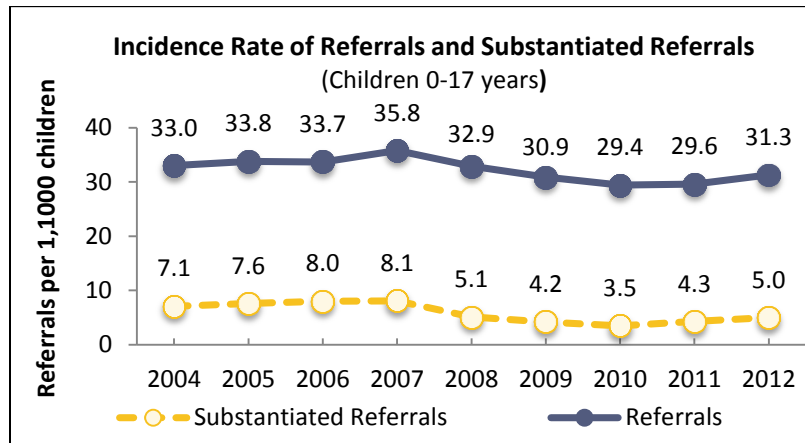
Goal EG 41.8 / Performance  
Relative performance to goal

Apr11-Mar12	Jul11-Jun12	Oct11-Sep12	Jan12-Dec12	Apr12-Mar13
30.8	32.4	33.7	35.1	37.7
0.74	0.78	0.81	0.84	0.90
■	■	■	■	◆



# HISTORICAL DATA CHARTS AND RACE/ETHNICITY TABLES

## Participation Rates

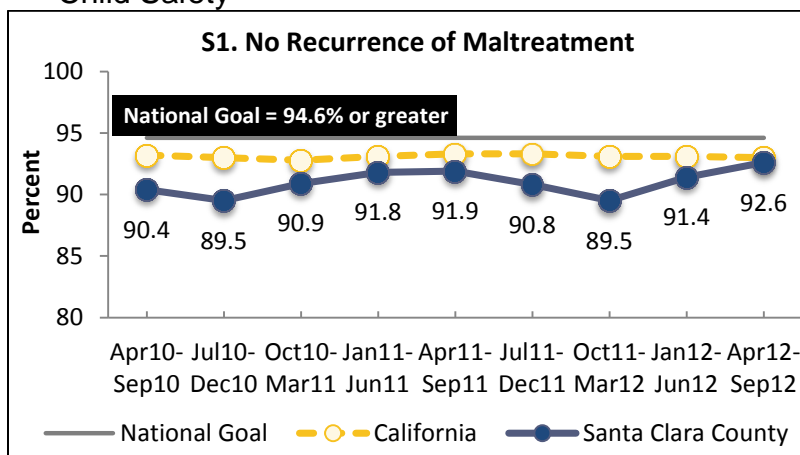


**Incidence Rate for Referrals, Substantiations and Foster Care Entries per 1,000 Children (CY 2012)**

Ethnicity	Referrals	Substantiated Referrals	All Entries
Black	103.3	13.4	8.7
White	24.2	3.7	1.3
Latino	50.4	9.0	2.9
Asian/ Pacific Islander	12.5	1.4	0.5
Native American	49.3	7.5	5.4
Total	31.3	5.0	1.8

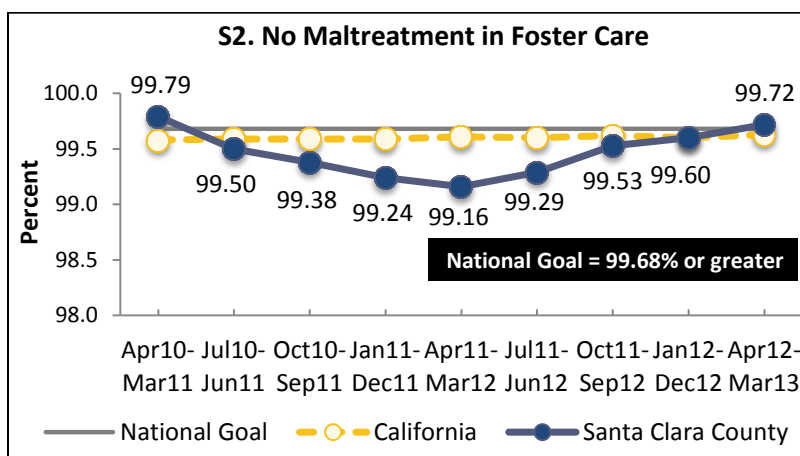
## Child Safety

S1. Of all children who were victims of a substantiated or indicated maltreatment allegation during the first 6 months of a year, what percent were not victims of another substantiated or indicated maltreatment allegation within the next 6-month period?



S1	National Standard	Last Year (Apr11- Sep11)		Current Period (Apr12- Sep12)	
		Rate	Goal met (✓) or not (✗)	Rate	Goal met (✓) or not (✗)
Black	≥ 94.6%	91.8%	✗	86.2%	✗
White	≥ 94.6%	92.4%	✗	95.0%	✓
Latino	≥ 94.6%	90.6%	✗	92.1%	✗
Asian/ Pacific Islander	≥ 94.6%	100.0%	✓	95.4%	✓
Native American	≥ 94.6%	100.0%	✓	100.0%	✓
Total	≥ 94.6%	91.9%	✗	92.6%	✗

S2. Of all children served in foster care during the year, what percent were not victims of a substantiated maltreatment allegation by a foster parent or facility staff member?

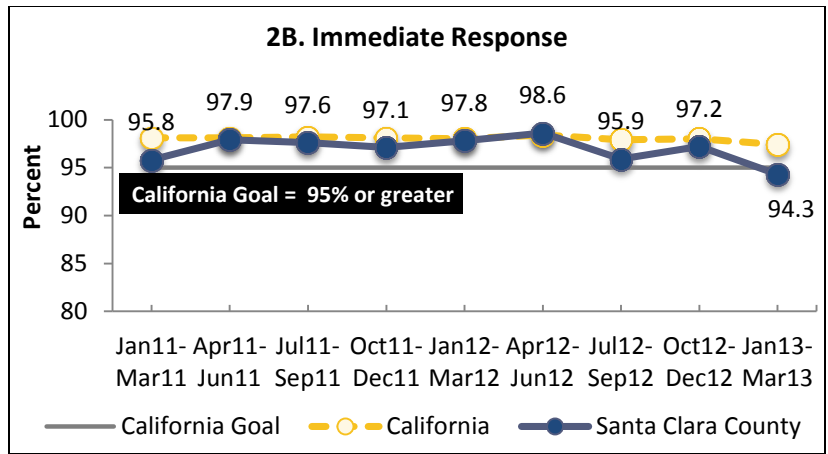


S2	National Standard	Last Year (Apr11- Mar12)		Current Period (Apr12- Mar13)	
		Rate	Goal met (✓) or not (✗)	Rate	Goal met (✓) or not (✗)
Black	≥ 99.68%	97.46%	✗	99.47%	✗
White	≥ 99.68%	99.66%	✗	99.68%	✓
Latino	≥ 99.68%	99.26%	✗	99.74%	✓
Asian/ Pacific Islander	≥ 99.68%	100.00%	✓	100.00%	✓
Native American	≥ 99.68%	100.00%	✓	100.00%	✓
Total	≥ 99.68%	99.16%	✗	99.72%	✓



2B. State Outcome indicator:

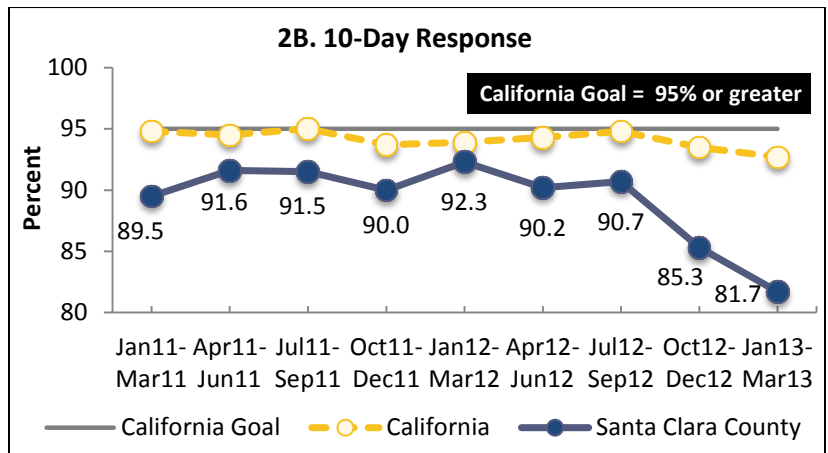
Percent of immediate response referrals with a timely response



2B. Immediate Response	California Goal	Last Year (Jan12- Mar12)		Current Period (Jan13- Mar13)	
		Rate	Goal met (✓) or not (✗)	Rate	Goal met (✓) or not (✗)
Ethnicity	Rate	Rate	Goal met (✓) or not (✗)	Rate	Goal met (✓) or not (✗)
Black	≥ 95%	97.6%	✓	100.0%	✓
White	≥ 95%	97.1%	✓	91.6%	✗
Latino	≥ 95%	98.4%	✓	93.9%	✗
Asian/ Pacific Islander	≥ 95%	96.2%	✓	94.6%	✗
Native American	≥ 95%	100.0%	✓	100.0%	✓
Total	≥ 95%	97.8%	✓	94.3%	✗

2B. State Outcome indicator:

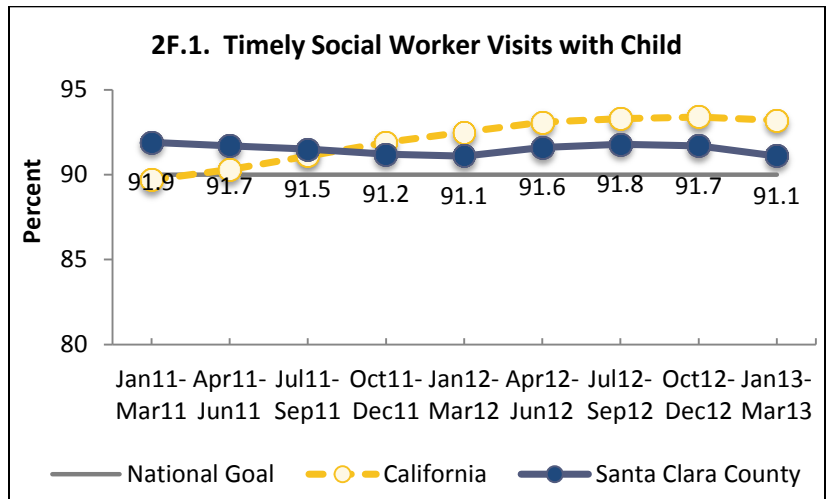
Percent of 10-day referrals with a timely response



2B. 10-Day Response	California Goal	Last Year (Jan12- Mar12)		Current Period (Jan13- Mar13)	
		Rate	Goal met (✓) or not (✗)	Rate	Goal met (✓) or not (✗)
Ethnicity	Rate	Rate	Goal met (✓) or not (✗)	Rate	Goal met (✓) or not (✗)
Black	≥ 95%	83.9%	✗	64.3%	✗
White	≥ 95%	93.7%	✗	79.1%	✗
Latino	≥ 95%	92.3%	✗	84.8%	✗
Asian/ Pacific Islander	≥ 95%	96.3%	✓	83.5%	✗
Native American	≥ 95%	83.3%	✗	50.0%	✗
Total	≥ 95%	92.3%	✗	81.7%	✗

2F.1. Timely Social Worker Visits with Child

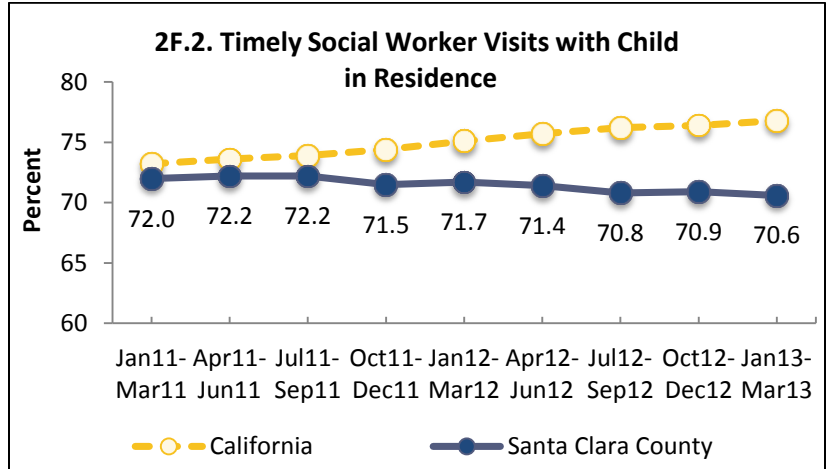
Percent of timely monthly social worker visits with child.



2F.1	National Goal	Last Year (Jan12- Mar12)		Current Period (Jan13- Mar13)	
Ethnicity	Rate	Rate	Goal met (✓) or not (✗)	Rate	Goal met (✓) or not (✗)
Black	≥ 90%	93.5%	✓	91.7%	✓
White	≥ 90%	92.0%	✓	93.3%	✓
Latino	≥ 90%	90.8%	✓	90.9%	✓
Asian/ Pacific Islander	≥ 90%	90.7%	✓	90.4%	✓
Native American	≥ 90%	69.4%	✗	69.7%	✗
Total	≥ 90%	91.1%	✓	91.1%	✓

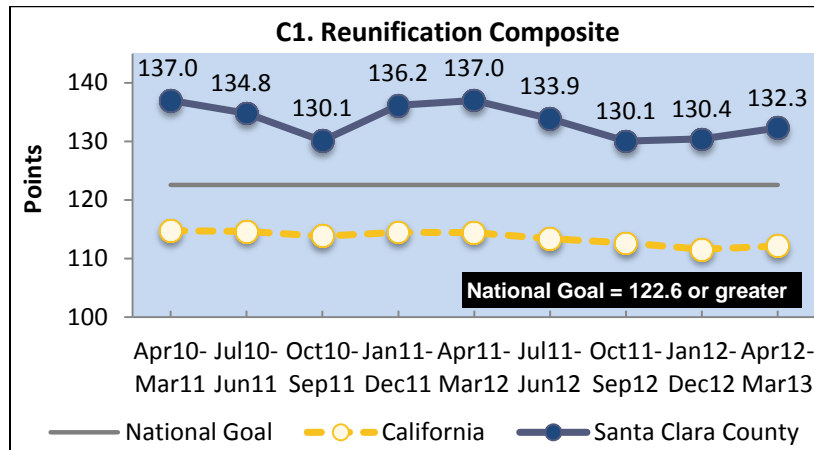
2F.2. Timely Social Worker Visits with Child in Residence

Percent of timely monthly social worker visits with child in residence.

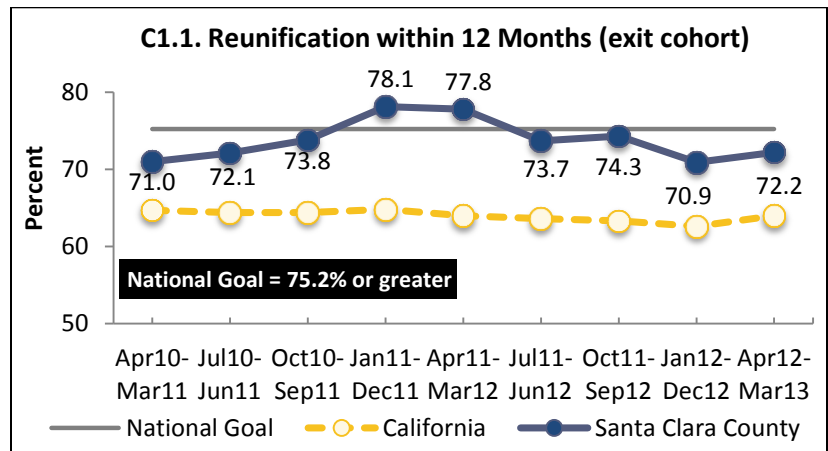


2F.2	National Goal	Last Year (Jan12- Mar12)		Current Period (Jan13- Mar13)	
Ethnicity	Rate	Rate	Goal met (✓) or not (✗)	Rate	Goal met (✓) or not (✗)
Black	NA	67.7%	NA	69.8%	NA
White	NA	72.5%	NA	72.0%	NA
Latino	NA	72.0%	NA	70.6%	NA
Asian/ Pacific Islander	NA	74.6%	NA	69.7%	NA
Native American	NA	73.3%	NA	65.8%	NA
Total	NA	71.7%	NA	70.6%	NA

## Timeliness and Permanency of Reunification

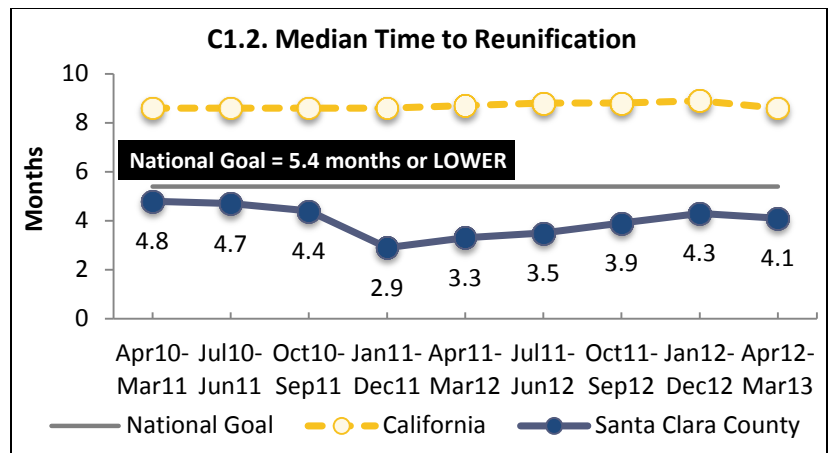


**C1.1.** Of all children discharged from foster care to reunification in the year who had been in foster care for 8 days or longer, what percent were reunified in less than 12 months from the date of the latest removal from home?



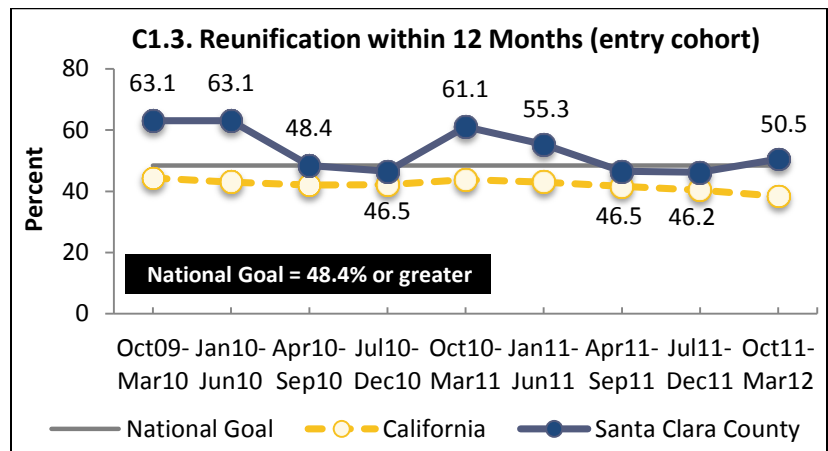
C1.1	National Standard	Last Year (Apr11- Mar12)		Current Period (Apr12- Mar13)	
		Rate	Goal met (✓) or not (✗)	Rate	Goal met (✓) or not (✗)
Black	≥ 75.2%	64.8%	✗	71.9%	✗
White	≥ 75.2%	74.0%	✗	71.1%	✗
Latino	≥ 75.2%	81.7%	✓	69.5%	✗
Asian/ Pacific Islander	≥ 75.2%	75.0%	✗	90.6%	✓
Native American	≥ 75.2%	NA	NA	100.0%	✓
Total	≥ 75.2%	77.8%	✓	72.2%	✗

**C1.2.** Of all children in foster care for 8 days or longer discharged to reunification during the year, what was the median length of stay (in months) from the date of latest removal from home until the date of discharge to reunification?



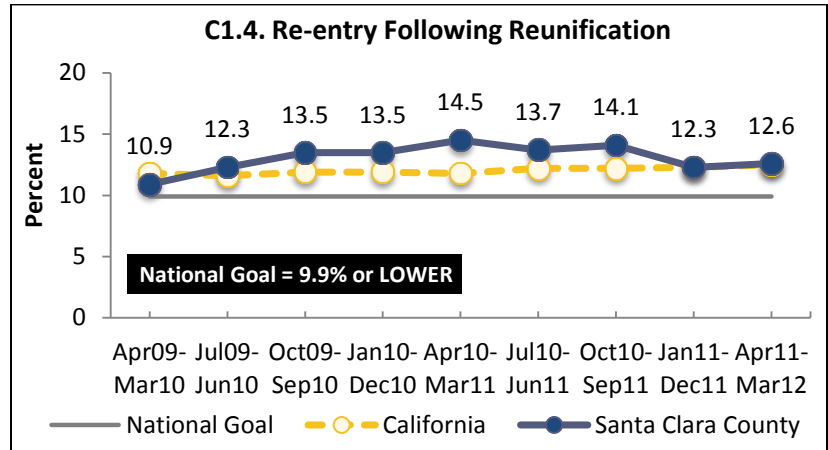
C1.2	National Standard	Last Year (Apr11- Mar12)		Current Period (Apr12- Mar13)	
		Median Months	Goal met (✓) or not (✗)	Median Months	Goal met (✓) or not (✗)
Ethnicity	Month				
Black	≤ 5.4	7.2	✗	1.7	✓
White	≤ 5.4	6.9	✗	6.5	✗
Latino	≤ 5.4	2.5	✓	5.2	✓
Asian/ Pacific Islander	≤ 5.4	2.0	✓	1.5	✓
Native American	≤ 5.4	NA	NA	4.2	✓
Total	≤ 5.4	3.3	✓	4.1	✓

**C1.3.** Of all children entering foster care for the first time in a 6-month period, and who remained in foster care for 8 days or longer, what percent were discharged from foster care to reunification in less than 12 months from the date of latest removal from home?



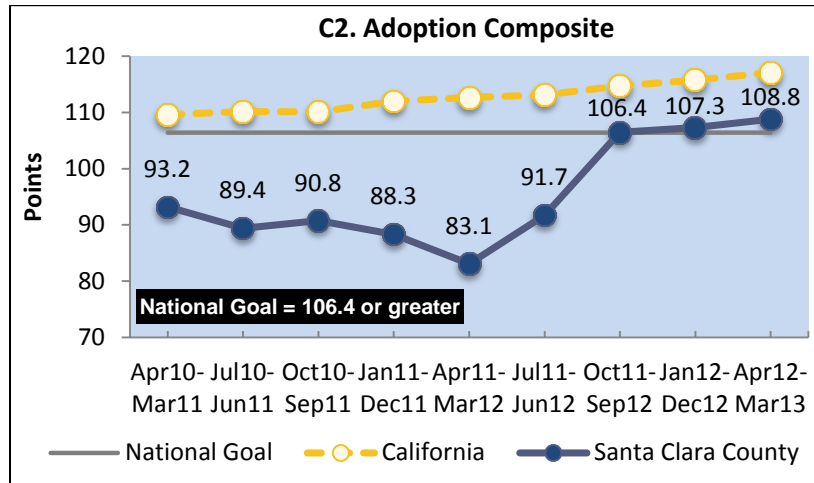
C1.3	National Standard	Last Year (Oct10- Mar11)		Current Period (Oct11- Mar12)	
		Rate	Goal met (✓) or not (✗)	Rate	Goal met (✓) or not (✗)
Ethnicity	Rate				
Black	≥ 48.4%	57.1%	✓	41.2%	✗
White	≥ 48.4%	51.4%	✓	59.5%	✓
Latino	≥ 48.4%	64.3%	✓	48.6%	✓
Asian/ Pacific Islander	≥ 48.4%	80.0%	✓	61.5%	✓
Native American	≥ 48.4%	NA	NA	NA	NA
Total	≥ 48.4%	61.1%	✓	50.5%	✓

**C1.4.** Of all children discharged from foster care to reunification during the year, what percent reentered foster care in less than 12 months from the date of discharge?

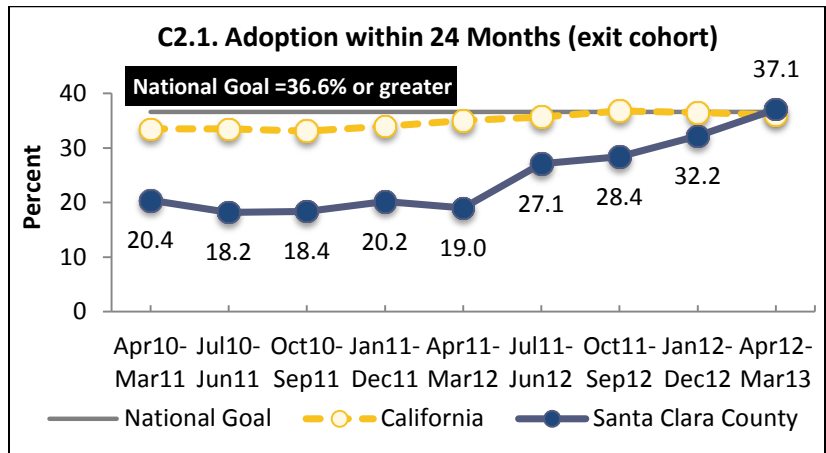


C1.4	National Standard	Last Year (Apr10- Mar11)		Current Period (Apr11- Mar12)	
		Rate	Goal met (✓) or not (✗)	Rate	Goal met (✓) or not (✗)
Ethnicity	Rate	Rate	Goal met (✓) or not (✗)	Rate	Goal met (✓) or not (✗)
Black	≤ 9.9%	17.0%	✗	15.9%	✗
White	≤ 9.9%	15.8%	✗	16.4%	✗
Latino	≤ 9.9%	15.5%	✗	11.0%	✗
Asian/ Pacific Islander	≤ 9.9%	NA	NA	11.1%	✗
Native American	≤ 9.9%	NA	NA	100.0%	✗
Total	≤ 9.9%	14.5%	✗	12.6%	✗

## Timeliness to Adoption

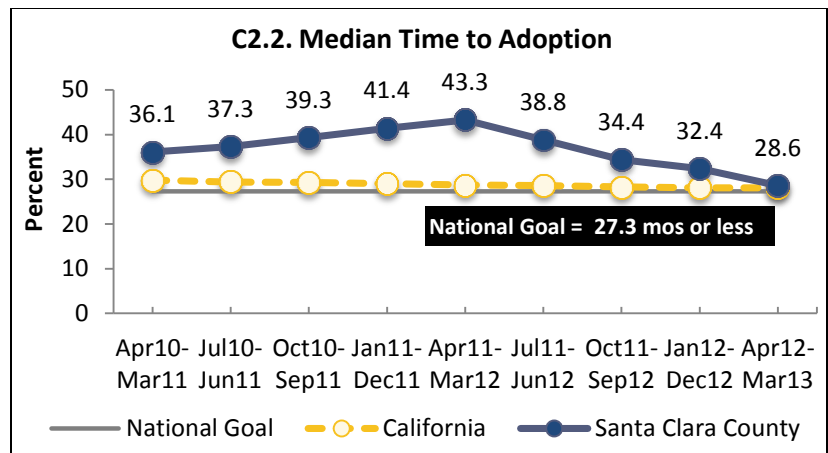


**C2.1.** Of all children who were discharged from foster care to a finalized adoption during a year, what percent were discharged in less than 24 months from the date of the latest removal from home?



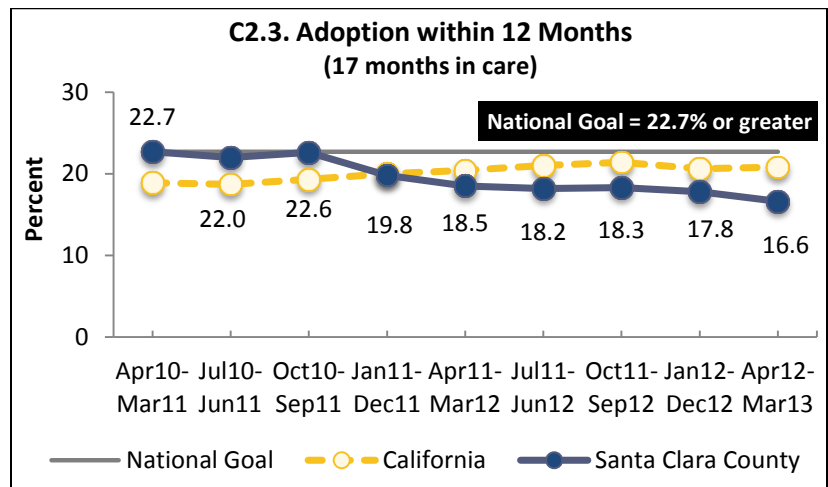
C2.1	National Standard	Last Year (Apr11- Mar12)		Current Period (Apr12- Mar13)	
		Rate	Goal met (✓) or not (✗)	Rate	Goal met (✓) or not (✗)
Black	≥ 36.6%	0.0%	✗	33.3%	✗
White	≥ 36.6%	34.8%	✗	66.7%	✓
Latino	≥ 36.6%	13.4%	✗	31.7%	✗
Asian/ Pacific Islander	≥ 36.6%	100.0%	✓	33.3%	✗
Native American	≥ 36.6%	NA	NA	0.0%	✗
Total	≥ 36.6%	19.0%	✗	37.1%	✓

**C2.2.** Of all children who were discharged from foster care to a finalized adoption during the year, what was the median length of stay in foster care in months from the date of latest removal from home to the date of discharge to adoption?



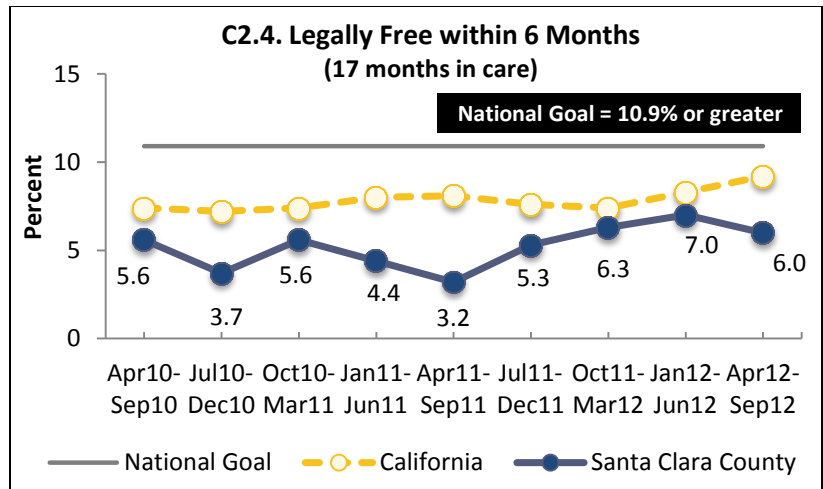
C2.2	National Standard	Last Year (Apr11- Mar12)		Current Period (Apr12- Mar13)	
		Median Months	Goal met (✓) or not (✗)	Median Months	Goal met (✓) or not (✗)
Ethnicity	Month				
Black	≤ 27.3	43.3	✗	43.1	✗
White	≤ 27.3	32.4	✗	19.8	✓
Latino	≤ 27.3	43.5	✗	31.3	✗
Asian/ Pacific Islander	≤ 27.3	18.5	✓	32.4	✗
Native American	≤ 27.3	NA	NA	50.8	✗
Total	≤ 27.3	43.3	✗	28.6	✗

**C2.3.** Of all children in foster care for 17 continuous months or longer on the first day of the year, what percent were discharged to a finalized adoption by the last day of the year?



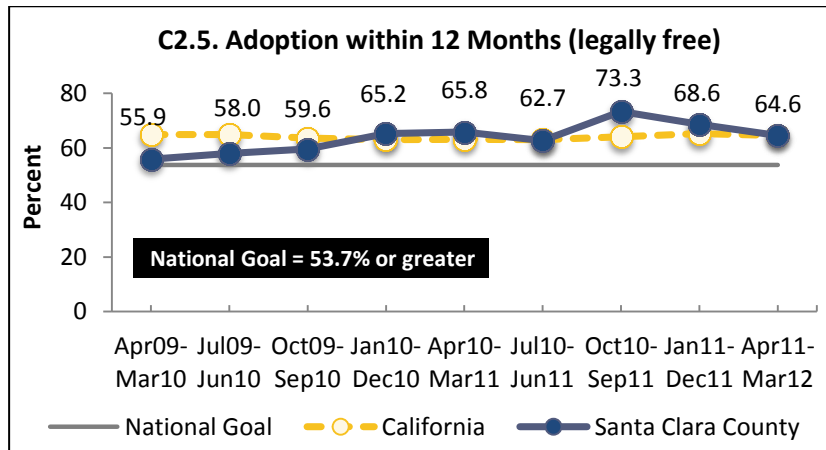
C2.3	National Standard	Last Year (Apr11- Mar12)		Current Period (Apr12- Mar13)	
		Rate	Goal met (✓) or not (✗)	Rate	Goal met (✓) or not (✗)
Ethnicity	Rate				
Black	≥ 22.7%	12.5%	✗	13.0%	✗
White	≥ 22.7%	20.7%	✗	7.8%	✗
Latino	≥ 22.7%	20.8%	✗	19.6%	✗
Asian/ Pacific Islander	≥ 22.7%	NA	NA	11.8%	✗
Native American	≥ 22.7%	NA	NA	40.0%	✓
Total	≥ 22.7%	18.5%	✗	16.6%	✗

**C2.4.** Of all children in foster care for 17 continuous months or longer and not legally free for adoption on the first day of the year, what percent became legally free within the next 6 months?



C2.4	National Standard	Last Year (Apr11- Sep11)		Current Period (Apr12- Sep12)	
		Rate	Goal met (✓) or not (✗)	Rate	Goal met (✓) or not (✗)
Ethnicity	Rate	Rate	Goal met (✓) or not (✗)	Rate	Goal met (✓) or not (✗)
Black	≥ 10.9%	2.0%	✗	7.1%	✗
White	≥ 10.9%	4.5%	✗	1.9%	✗
Latino	≥ 10.9%	3.5%	✗	6.5%	✗
Asian/ Pacific Islander	≥ 10.9%	NA	NA	13.3%	✓
Native American	≥ 10.9%	NA	NA	NA	NA
Total	≥ 10.9%	3.2%	✗	6.0%	✗

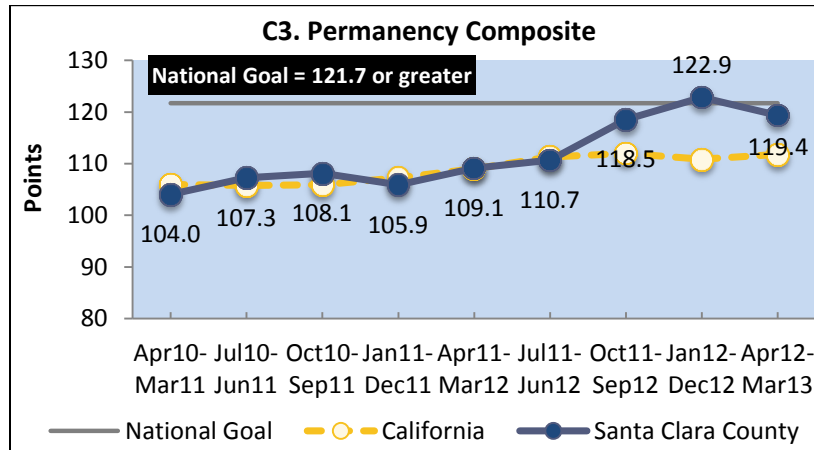
**C2.5.** Of all children in foster care who became legally free for adoption during the year, what percent were then discharged to a finalized adoption in less than 12 months?



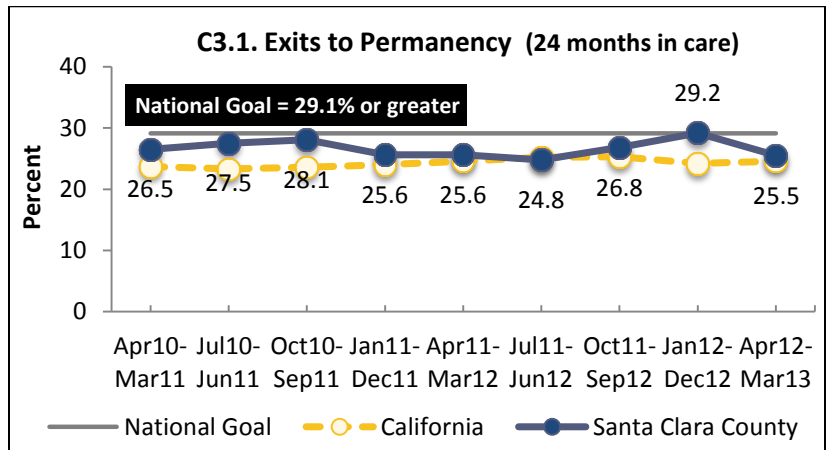
C2.5	National Standard	Last Year (Apr10- Mar11)		Current Period (Apr11- Mar12)	
		Rate	Goal met (✓) or not (✗)	Rate	Goal met (✓) or not (✗)
Ethnicity	Rate	Rate	Goal met (✓) or not (✗)	Rate	Goal met (✓) or not (✗)
Black	≥ 53.7%	66.7%	✓	50.0%	✗
White	≥ 53.7%	81.3%	✓	66.7%	✓
Latino	≥ 53.7%	60.5%	✓	64.8%	✓
Asian/ Pacific Islander	≥ 53.7%	100.0%	✓	75.0%	✓
Native American	≥ 53.7%	33.3%	✗	NA	NA
Total	≥ 53.7%	65.8%	✓	64.6%	✓



## Permanency for Children in Long-term Care

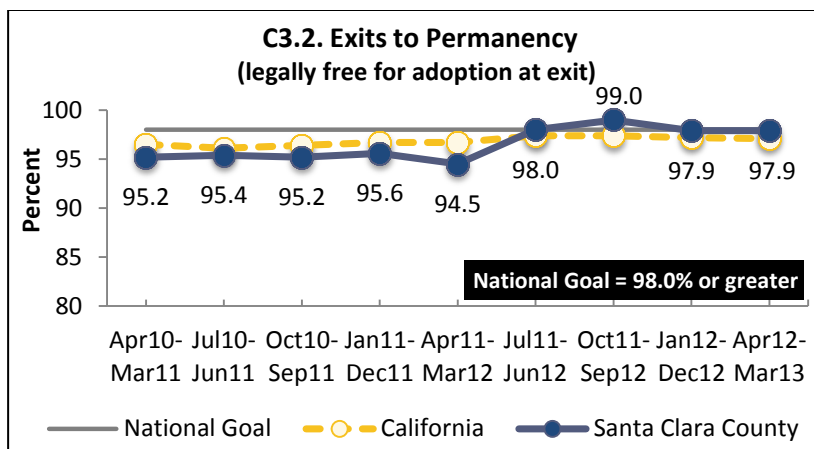


**C3.1.** Of all children in foster care for 24 months or longer on the first day of the year, what percent were discharged to a permanent home by the end of the year and prior to turning 18?



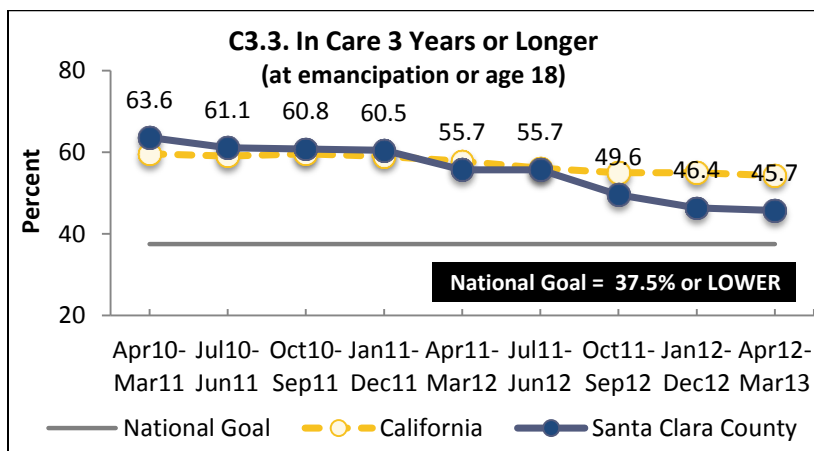
C3.1	National Standard	Last Year (Apr11- Mar12)		Current Period (Apr12- Mar13)	
		Rate	Goal met (✓) or not (✗)	Rate	Goal met (✓) or not (✗)
Black	≥ 29.1%	18.7%	✗	18.0%	✗
White	≥ 29.1%	21.0%	✗	11.1%	✗
Latino	≥ 29.1%	30.3%	✓	30.2%	✓
Asian/ Pacific Islander	≥ 29.1%	9.1%	✗	28.6%	✗
Native American	≥ 29.1%	16.7%	✗	60.0%	✓
Total	≥ 29.1%	25.6%	✗	25.5%	✗

**C3.2.** Of all children discharged from foster care during the year who were legally free for adoption, what percent were discharged to a permanent home prior to turning 18?



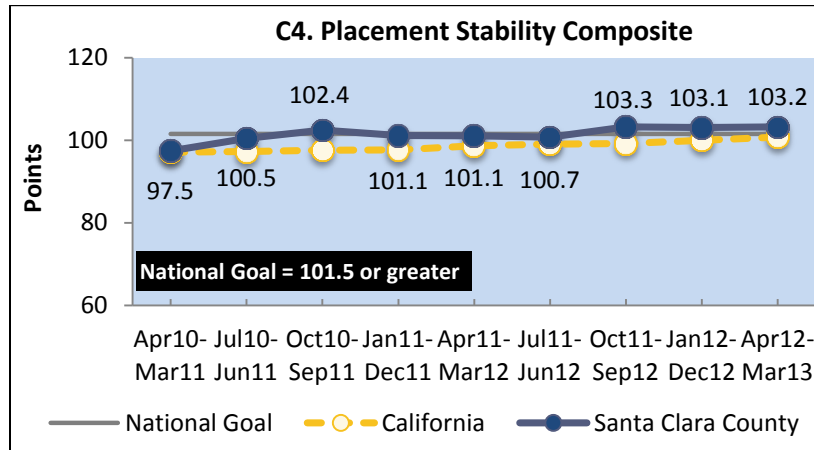
C3.2	National Standard	Last Year (Apr11- Mar12)		Current Period (Apr12- Mar13)	
		Rate	Goal met (✓) or not (✗)	Rate	Goal met (✓) or not (✗)
Ethnicity	Rate	Rate	Goal met (✓) or not (✗)	Rate	Goal met (✓) or not (✗)
Black	≥ 98.0%	100.0%	✓	100.0%	✓
White	≥ 98.0%	91.7%	✗	100.0%	✓
Latino	≥ 98.0%	94.7%	✗	97.0%	✗
Asian/ Pacific Islander	≥ 98.0%	100.0%	✓	100.0%	✓
Native American	≥ 98.0%	NA	NA	100.0%	✓
Total	≥ 98.0%	94.5%	✗	97.9%	✗

**C3.3.** Of all children in foster care during the year who were either discharged to emancipation or turned 18 while still in care, what percent had been in foster care for 3 years or longer?

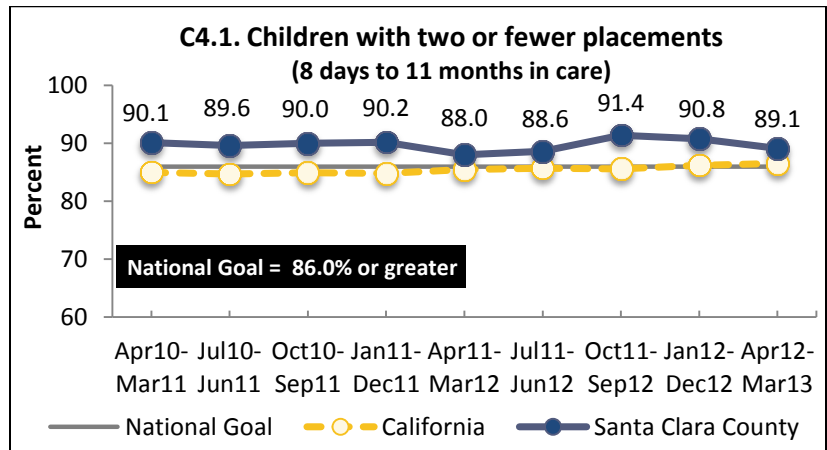


C3.3	National Standard	Last Year (Apr11- Mar12)		Current Period (Apr12- Mar13)	
		Rate	Goal met (✓) or not (✗)	Rate	Goal met (✓) or not (✗)
Ethnicity	Rate	Rate	Goal met (✓) or not (✗)	Rate	Goal met (✓) or not (✗)
Black	≤ 37.5%	41.2%	✗	56.3%	✗
White	≤ 37.5%	52.4%	✗	53.3%	✗
Latino	≤ 37.5%	58.5%	✗	38.9%	✗
Asian/ Pacific Islander	≤ 37.5%	63.6%	✗	50.0%	✗
Native American	≤ 37.5%	100.0%	✗	NA	NA
Total	≤ 37.5%	55.7%	✗	45.7%	✗

## Placement Stability

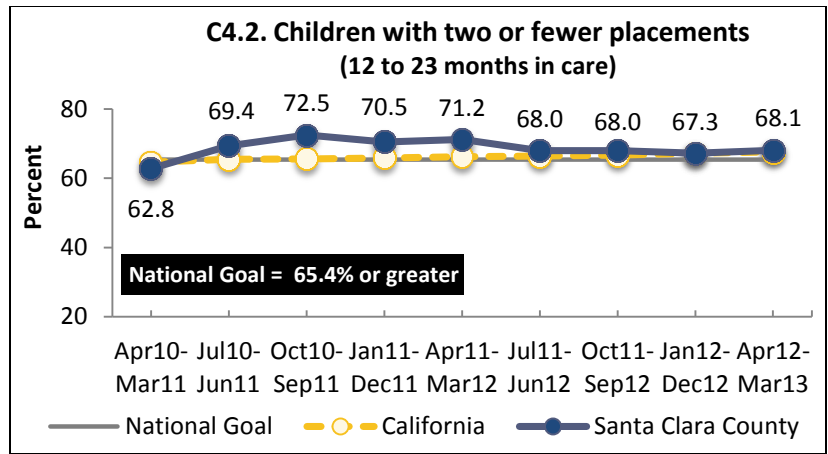


**C4.1.** Of all children served in foster care during a year who were in foster care for at least 8 days but less than 12 months, what percent had two or fewer placement settings?



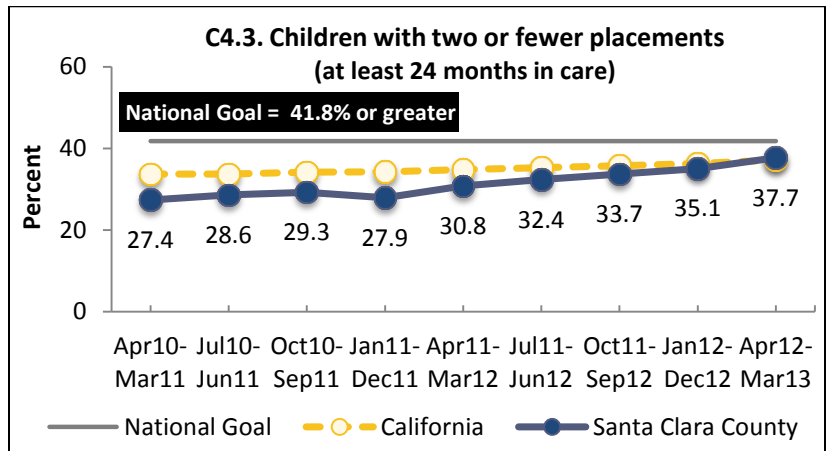
C4.1	National Standard	Last Year (Apr11- Mar12)		Current Period (Apr12- Mar13)	
		Rate	Goal met (✓) or not (✗)	Rate	Goal met (✓) or not (✗)
Black	≥ 86.0%	89.7%	✓	91.2%	✓
White	≥ 86.0%	78.3%	✗	91.4%	✓
Latino	≥ 86.0%	89.5%	✓	87.6%	✓
Asian/ Pacific Islander	≥ 86.0%	100.0%	✓	93.9%	✓
Native American	≥ 86.0%	80.0%	✗	80.0%	✗
Total	≥ 86.0%	88.0%	✓	89.1%	✓

**C4.2.** Of all children served in foster care during a year who were in foster care for at least 12 months but less than 24 months, what percent had two or fewer placement settings?



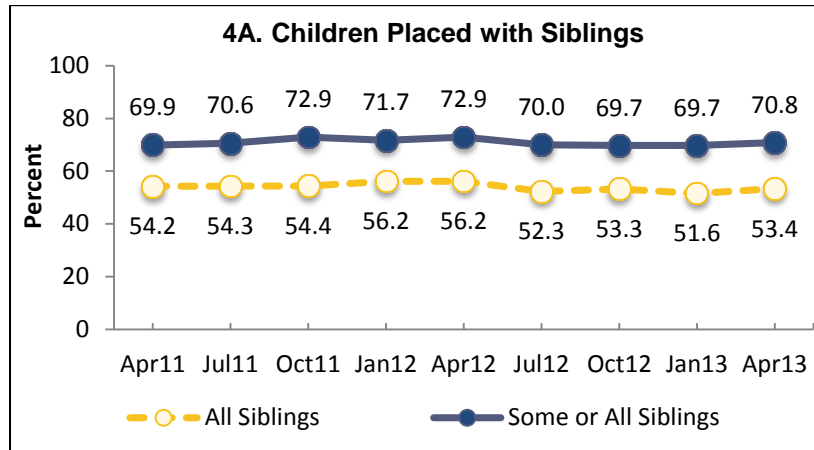
C4.2	National Standard	Last Year (Apr11- Mar12)		Current Period (Apr12- Mar13)	
		Rate	Goal met (✓) or not (✗)	Rate	Goal met (✓) or not (✗)
Black	≥ 65.4%	61.1%	✗	78.8%	✓
White	≥ 65.4%	80.7%	✓	69.8%	✓
Latino	≥ 65.4%	70.2%	✓	64.4%	✗
Asian/ Pacific Islander	≥ 65.4%	84.6%	✓	100.0%	✓
Native American	≥ 65.4%	0.0%	✗	100.0%	✓
Total	≥ 65.4%	71.2%	✓	68.1%	✓

**C4.3.** Of all children served in foster care during a year who were in foster care for at least 24 months, what percent had two or fewer placement settings?



C4.3	National Standard	Last Year (Apr11- Mar12)		Current Period (Apr12- Mar13)	
		Rate	Goal met (✓) or not (✗)	Rate	Goal met (✓) or not (✗)
Black	≥ 41.8%	32.5%	✗	34.4%	✗
White	≥ 41.8%	28.6%	✗	30.7%	✗
Latino	≥ 41.8%	32.1%	✗	41.5%	✗
Asian/ Pacific Islander	≥ 41.8%	20.0%	✗	23.8%	✗
Native American	≥ 41.8%	14.3%	✗	14.3%	✗
Total	≥ 41.8%	30.8%	✗	37.7%	✗

## Child and Family Well-being

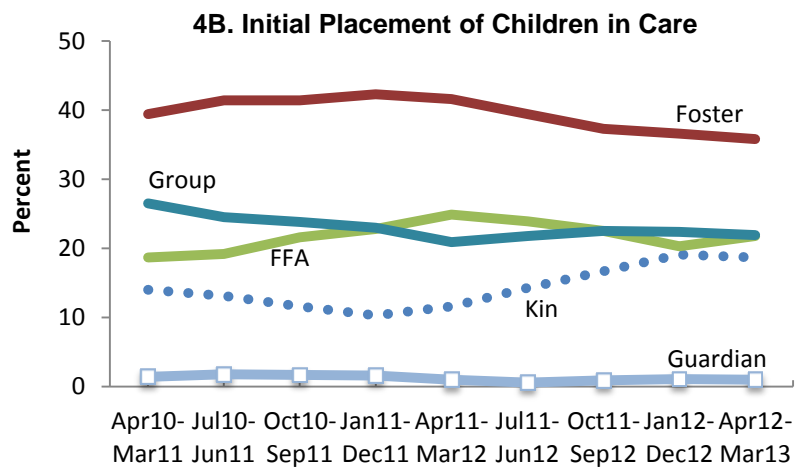


**4A. Children Placed with Some or All Siblings, April 1, 2013**

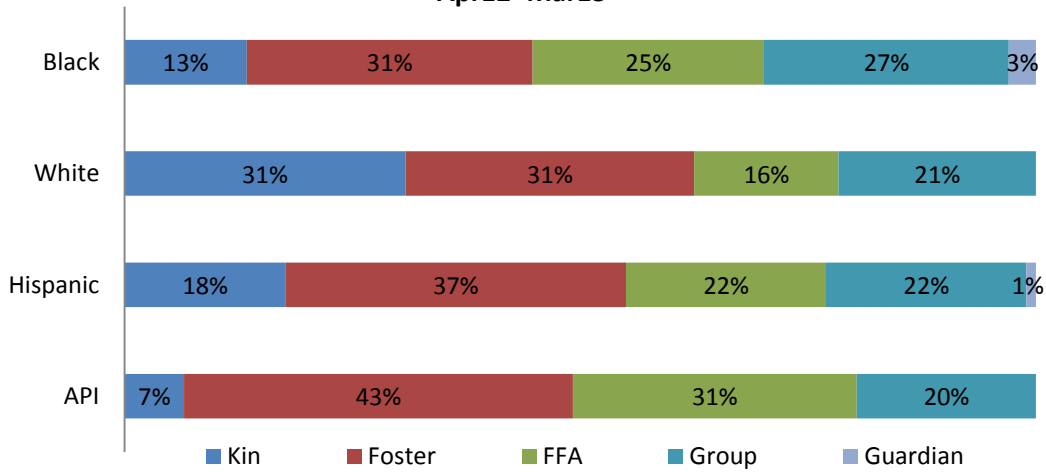
Ethnicity	All Siblings	Some or All Siblings
Black	51.6%	59.7%
White	60.0%	68.8%
Latino	51.5%	72.4%
Asian/ Pacific Islander	72.0%	80.0%
Native American	50.0%	50.0%
Total	53.4%	70.8%

**4B. Initial Placement of Children in Care, Apr12- Mar13**

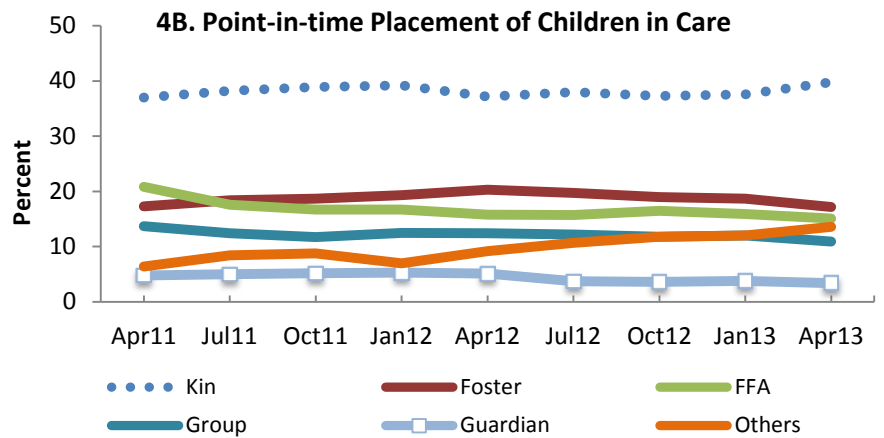
Placement Type	Rate
Kin	19.0%
Foster	36.3%
FFA	21.9%
Group	22.2%
Guardian	0.6%



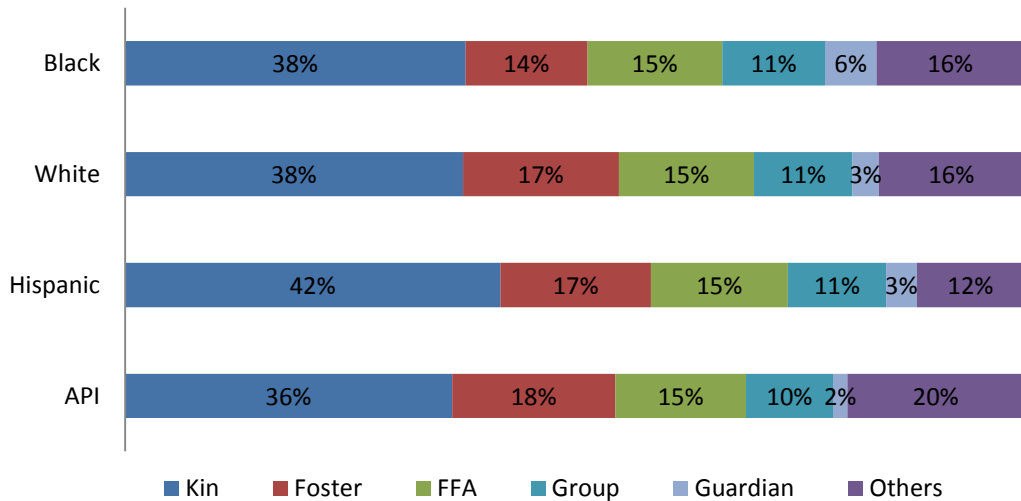
**4B. Initial Placement of Children in Care by Race/Ethnicity  
Apr12- Mar13**



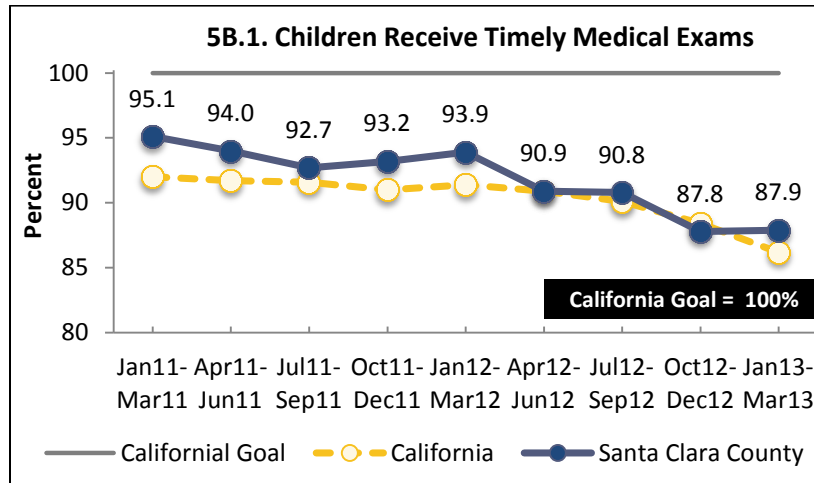
4B. Point-in-time Placement of Children in Care, Apr 1, 2013	
Placement Type	Rate
Kin	39.8%
Foster	17.2%
FFA	15.1%
Group	10.9%
Guardian	3.4%
Others	13.6%



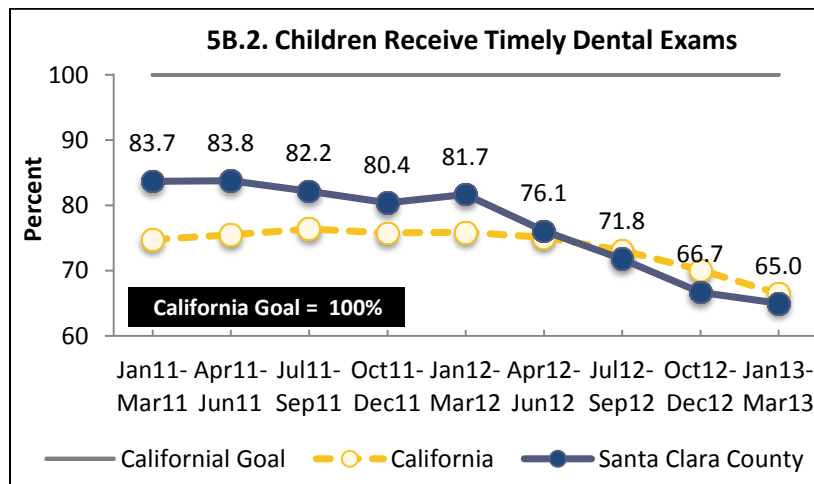
**4B. Point-in-time Placement of Children by Race/Ethnicity  
April 1, 2013**



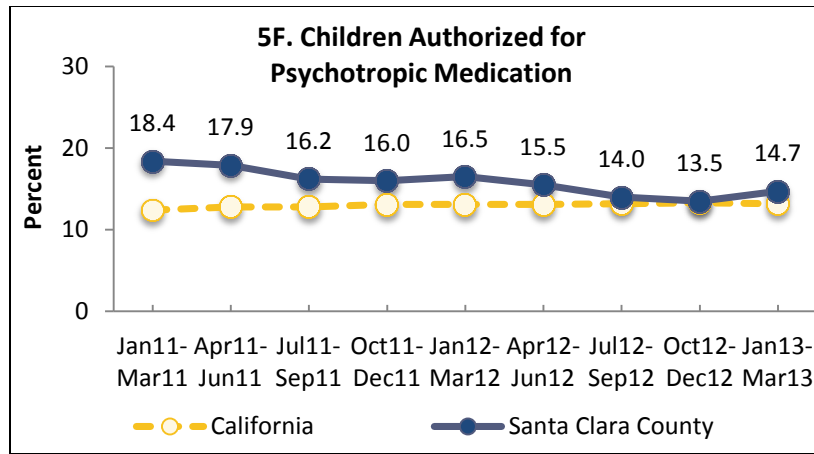
## Child Health Well-being



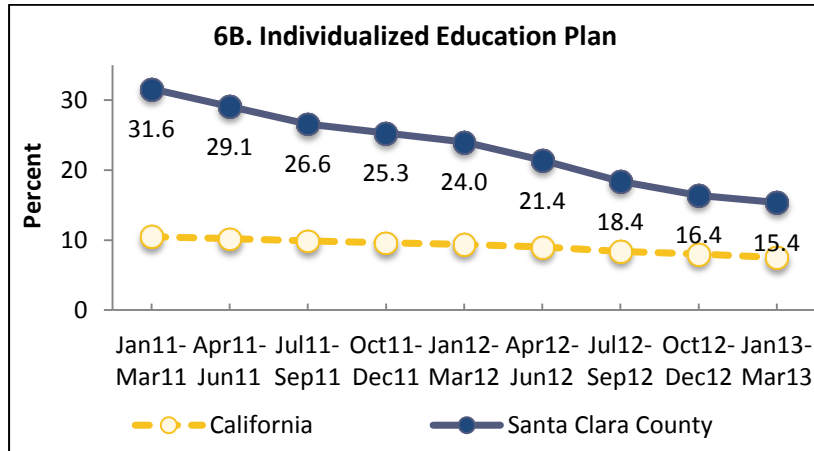
5B.1. Children Receive Timely Medical Exams, January 2013 - March 2013						
Medical Exams	Black	White	Latino	Asian/ Pacific Islander	Native American	Total
Received a timely medical exam	85.6%	89.1%	87.7%	92.6%	85.7%	87.9%



5B.2. Children Receive Timely Dental Exams, January 2013 - March 2013						
Dental Exams	Black	White	Latino	Asian/ Pacific Islander	Native American	Total
Received a timely dental exam	60.9%	71.3%	63.5%	78.0%	50.0%	65.0%



5F. Children Authorized for Psychotropic Medication, January 2013 - March 2013						
Psychotropic Medication	Black	White	Latino	Asian/ Pacific Islander	Native American	Total
Authorized for psychotropic medications	16.3%	18.2%	14.7%	6.6%	0.0%	14.7%



6B. Individualized Education Plan, January 2013 - March 2013						
Individualized Education Plan	Black	White	Latino	Asian/ Pacific Islander	Native American	Total
Have had an IEP	22.4%	19.8%	13.9%	6.5%	25.0%	15.4%