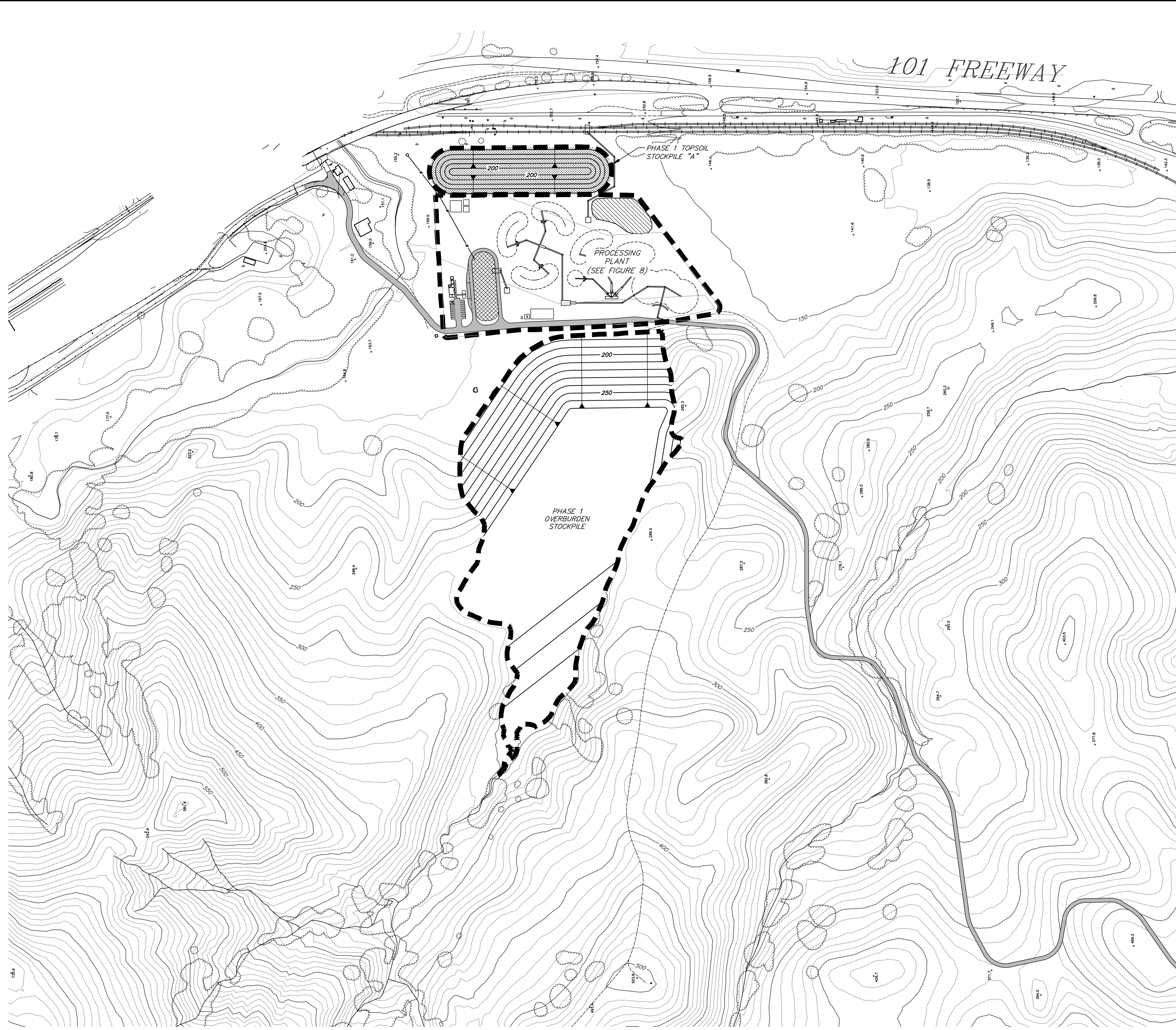
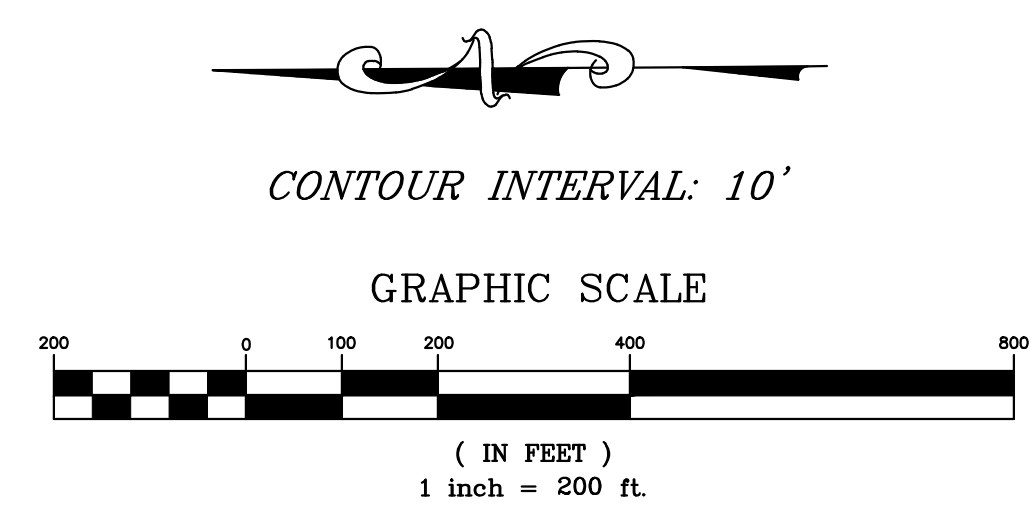


C:\01 Mammoth\4020 Sargent Ranch\Local Improvement Plans\Plan Set RA\Fig 10 Phase 1 and 2 Plan_Cad2014.dwg Aug 04 2017 - 3:30pm.srf



- LEGEND**
- MINING LIMIT LINE
 - PROPOSED GRADED ROAD WIDTH AS SHOWN
 - PROPOSED STORMWATER SEDIMENT BASIN
 - PROPOSED WATER LINE FROM OFFSITE WELL
 - PROPOSED PROCESS WATER POND
 - EXISTING GROUND CONTOUR AND ELEV.
 - PROPOSED GROUND CONTOUR AND ELEV.
 - TOPSOIL STOCKPILE AREA
 - CREEK
 - VEGETATION
 - SECTION LINE



t
h
a

triad/holmes assoc.
civil engineering
land surveying

MAMMOTH LAKES
BISHOP
REDWOOD CITY
SAN LUIS OBISPO

PREPARED & SUBMITTED BY:

DATE:

Copyright (C) 2017 by Triad/Holmes Associates. All Rights Reserved. This document is intended only for use on the project specified in the title block. Reproduction of this document or portions of this document, without the expressed written consent of Triad/Holmes, is prohibited.

REVISIONS:	BY:

PREPARED FOR:

VERNE FREEMAN
894 SAN ANTONIO RD
PALO ALTO, CA 94303

SARGENT RANCH QUARRY

PHASE 1 AND 2 STOCKPILE AREAS

DATE 07/06/2017
SCALE AS SHOWN
DRAWN SR
JOB NO. 01.4020
DWG

FIGURE 10a