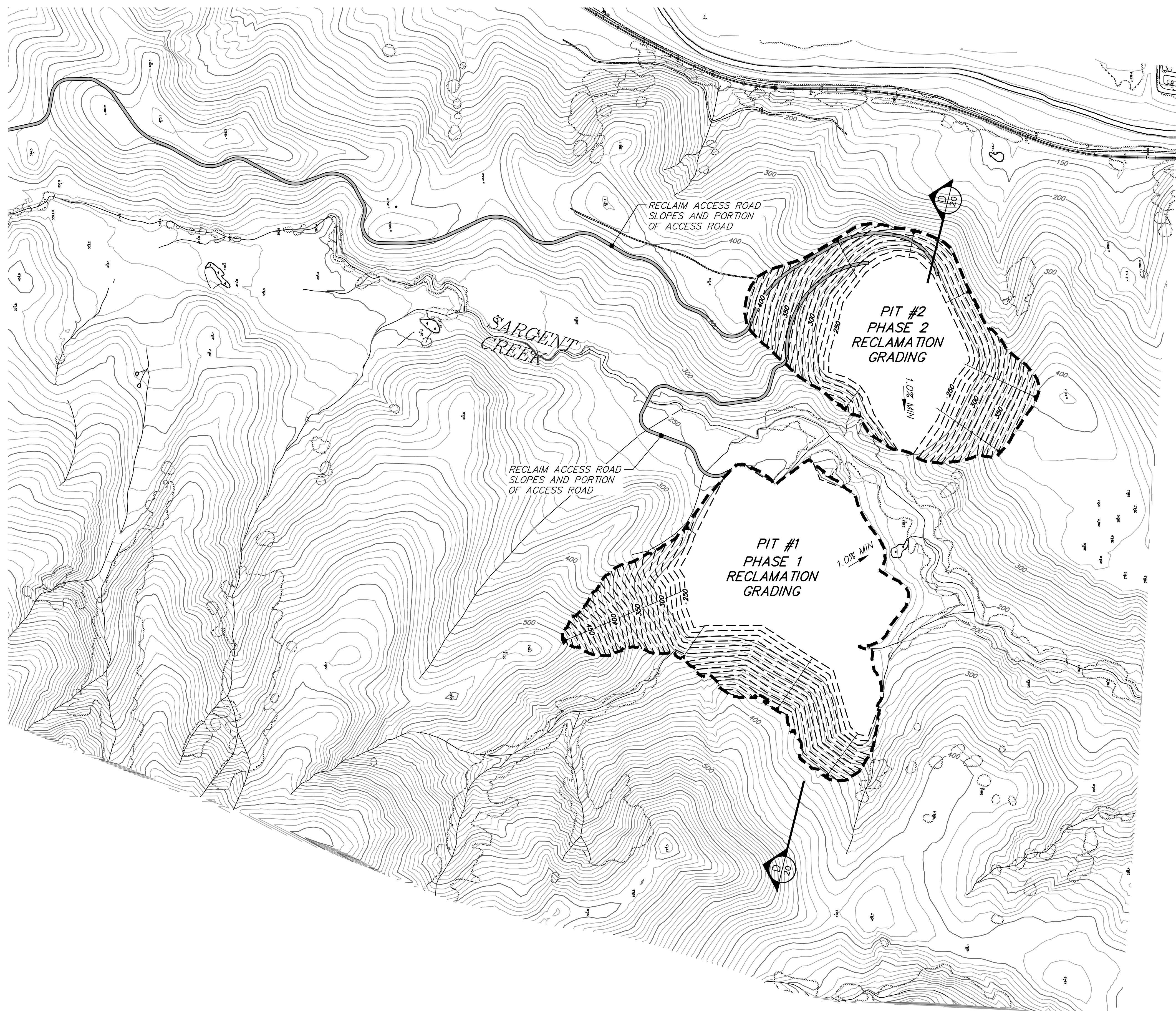


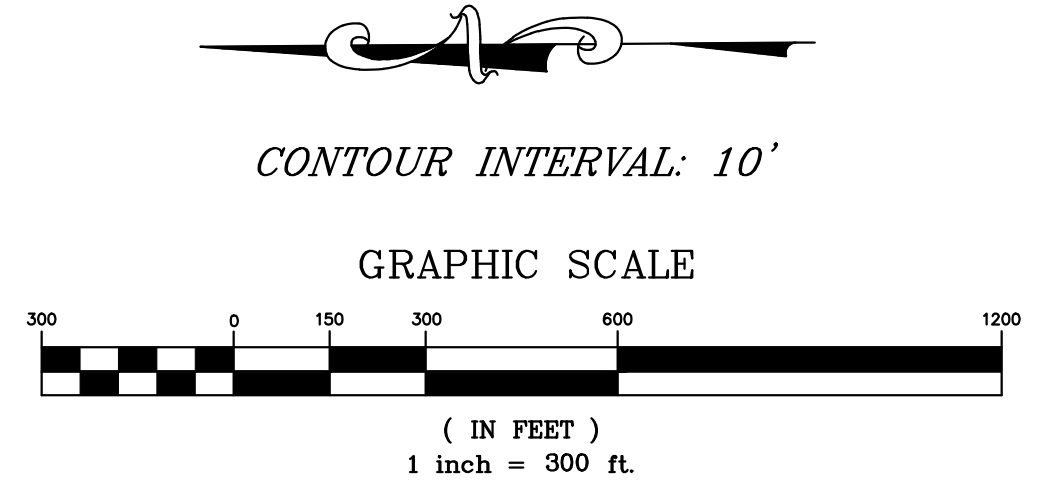
C:\01_Mammoth\4020_Sargent_Ranch\Acad\Improvement_Plans\Plan_Set_R4\Fig_17_Phase_1_and_2_Final_Reclamation_Cad2014.dwg Apr 02 2016 - 9:04am .scr



LEGEND

	MINING LIMIT LINE
	GRADED ROAD
	PROPOSED STORMWATER SEDIMENT BASIN
	PROPOSED WATER LINE FROM OFFSITE WELL
	PROPOSED PROCESS WATER POND
	EXISTING GROUND CONTOUR AND ELEV.
	PROPOSED GROUND CONTOUR AND ELEV.
	TOPSOIL STOCKPILE AREA
	CREEK
	VEGETATION
	SECTION LINE

- NOTES:**
1. PHASE 2 OVERBURDEN WILL BE USED TO RECLAIM PHASE 1 AND 2 AS SHOWN HEREON.
 2. PHASE 2 AND A PORTION OF PHASE 3 TOPSOIL SHALL BE SPREAD 6" MIN. ACROSS ALL OF PHASE 1 AND 2.
 3. REFER TO FIGURES 20-22 FOR MINE RECLAMATION CROSS SECTIONS.



PREPARED & SUBMITTED BY:
DATE:

Copyright (C) 2015 by Triad/Homes Associates. All Rights Reserved. This Document is Intended Only for Use on the Project Specified in the Title Block. Any Reproduction of this Document or Portion of this Document, Without the Express Written Consent of Triad/Homes, is Prohibited.

REVISIONS:	BY:

PREPARED FOR:
VERNE FREEMAN
994 SAN ANTONIO RD
PALO ALTO, CA 94303

**SARGENT RANCH QUARRY
PHASE 1 AND 2 FINAL RECLAMATION**

DATE: 04/01/2016
SCALE: AS SHOWN
DRAWN: SR
JOB NO: 01.4020
DWG: