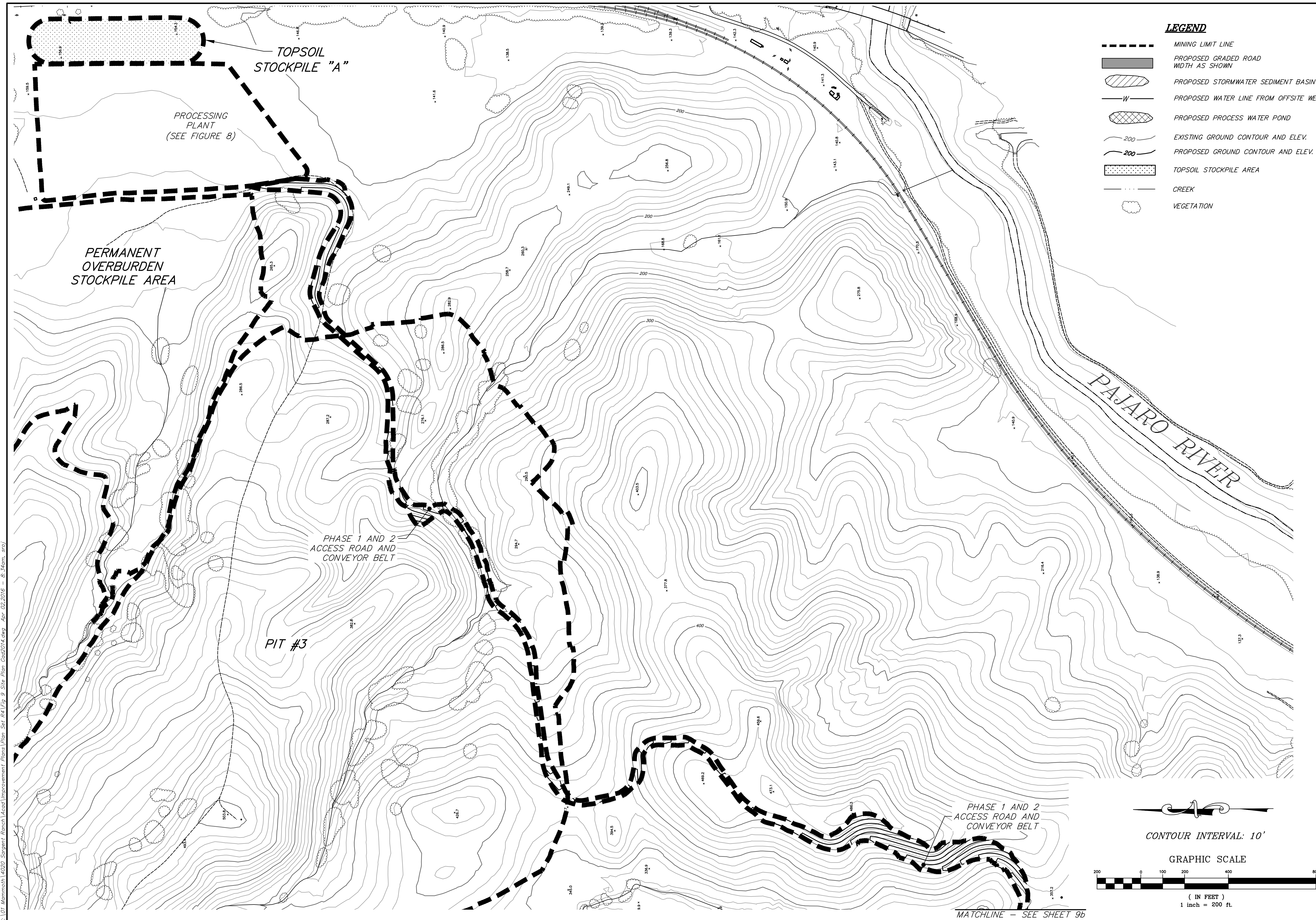


C:\01_Mammoth\4020_Sargent_Ranch_Misc\Improvement_Plans\Plan_Set_R4\Fig_9_Site_Plan_Gad2014.dwg, Apr. 02, 2016 - 8:34am, sroj



- LEGEND**
- MINING LIMIT LINE
 - ▬ PROPOSED GRADED ROAD WIDTH AS SHOWN
 - ▨ PROPOSED STORMWATER SEDIMENT BASIN
 - W PROPOSED WATER LINE FROM OFFSITE WELL
 - ▩ PROPOSED PROCESS WATER POND
 - 200 EXISTING GROUND CONTOUR AND ELEV.
 - 200 PROPOSED GROUND CONTOUR AND ELEV.
 - ▨ TOPSOIL STOCKPILE AREA
 - CREEK
 - ☁ VEGETATION

t h a
 triad/holmes assoc.
 civil engineering
 and surveying
 MAMMOTH LAKES
 BISHOP
 REDWOOD CITY
 SAN LUIS OBISPO

PREPARED & SUBMITTED BY:

DATE:

Copyright (C) 2015 by Triad/Holmes Associates. All Rights Reserved. This Document is Intended Only for Use on the Project Specified in the Title Block. Any Reproduction of this Document or Portion of this Document, Without the Express Written Consent of Triad/Holmes, is Prohibited.

REVISIONS:	BY:

PREPARED FOR:
 VERNIE FREEMAN
 994 SAN ANTONIO RD
 PALO ALTO, CA 94303

SARGENT RANCH QUARRY
PHASE 1 AND 2 ACCESS ROAD

DATE	04/01/2016
SCALE	AS SHOWN
DRAWN	SR
JOB NO.	01.4020
DWG.	

FIGURE 9a