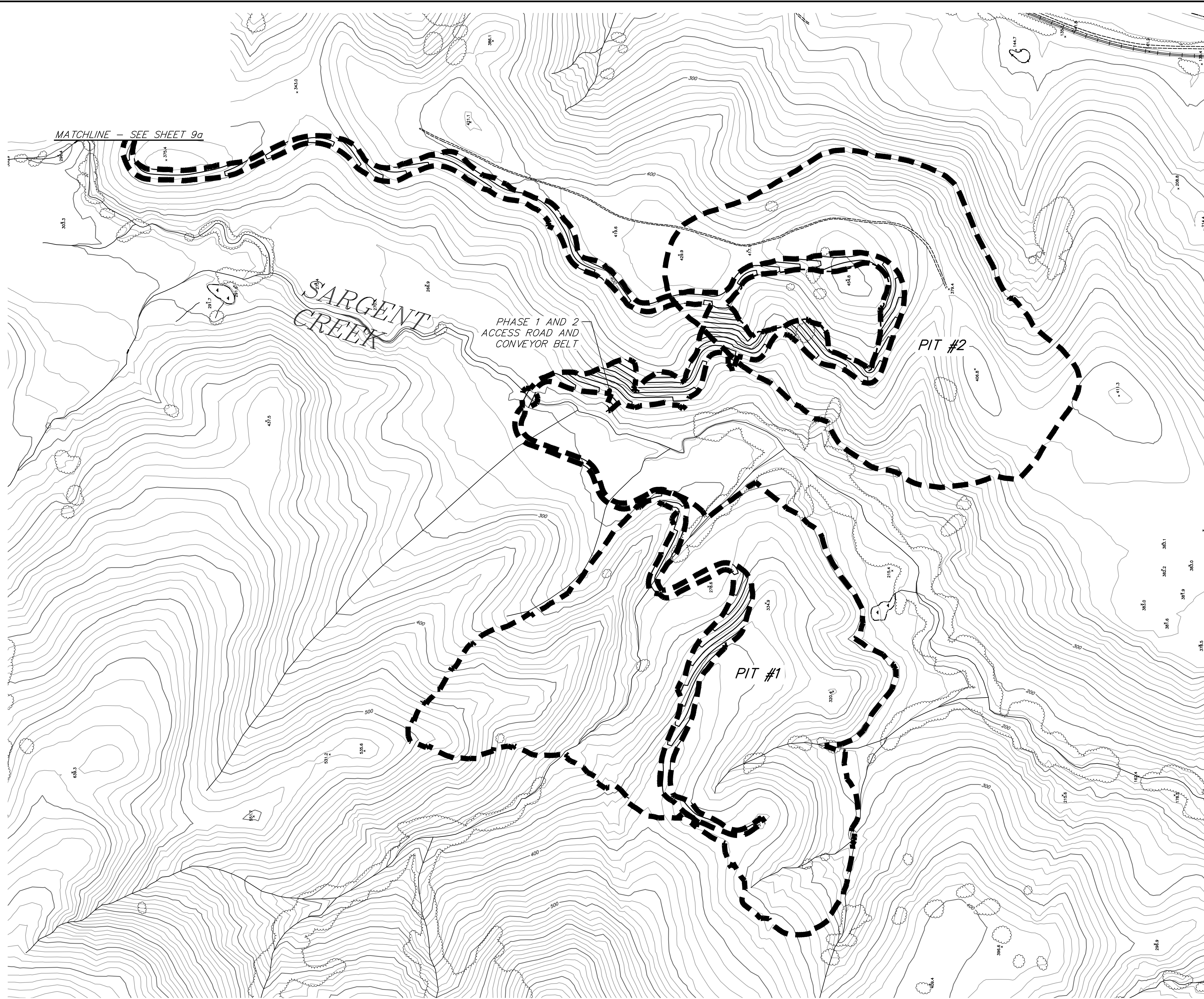
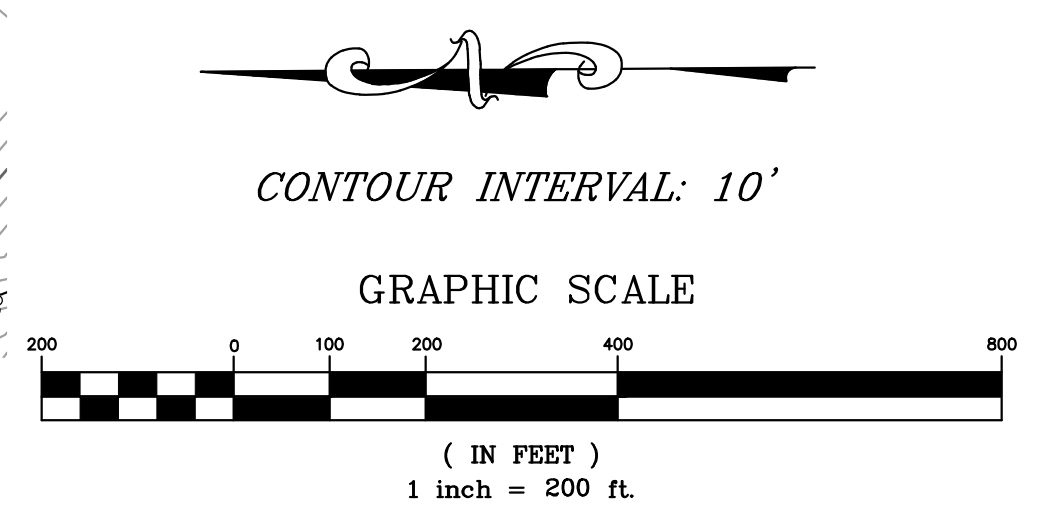


C:\01_Mammoth\4020_Sargent_Ranch\Acad\Improvement_Plans\Plan_Set_R4\Fig_9_Site_Plan_Cad2014.dwg, Apr. 02, 2016 - 8:35am, sroj



- LEGEND**
- MINING LIMIT LINE
 - PROPOSED GRADED ROAD WIDTH AS SHOWN
 - PROPOSED STORMWATER SEDIMENT BASIN
 - PROPOSED WATER LINE FROM OFFSITE WELL
 - PROPOSED PROCESS WATER POND
 - EXISTING GROUND CONTOUR AND ELEV.
 - PROPOSED GROUND CONTOUR AND ELEV.
 - TOPSOIL STOCKPILE AREA
 - CREEK
 - VEGETATION



triad/holmes assoc.
civil engineering
and surveying

MAMMOTH LAKES
BISHOP
REDWOOD CITY
SAN LUIS OBISPO

PREPARED & SUBMITTED BY:

DATE:

Copyright (C) 2015 by Triad/Holmes Associates. All Rights Reserved. This Document is Intended Only for Use on the Project Specified in the Title Block. Any Reproduction of this Document or Portion of this Document, Without the Express Written Consent of Triad/Holmes, is Prohibited.

REVISIONS:	BY:

PREPARED FOR:

VERNE FREEMAN
994 SAN ANTONIO RD
PALO ALTO, CA 94303

SARGENT RANCH QUARRY
PHASE 1 AND 2 ACCESS ROAD

DATE	04/01/2016
SCALE	AS SHOWN
DRAWN	SR
JOB NO.	01.4020
DWG.	FIGURE 9b