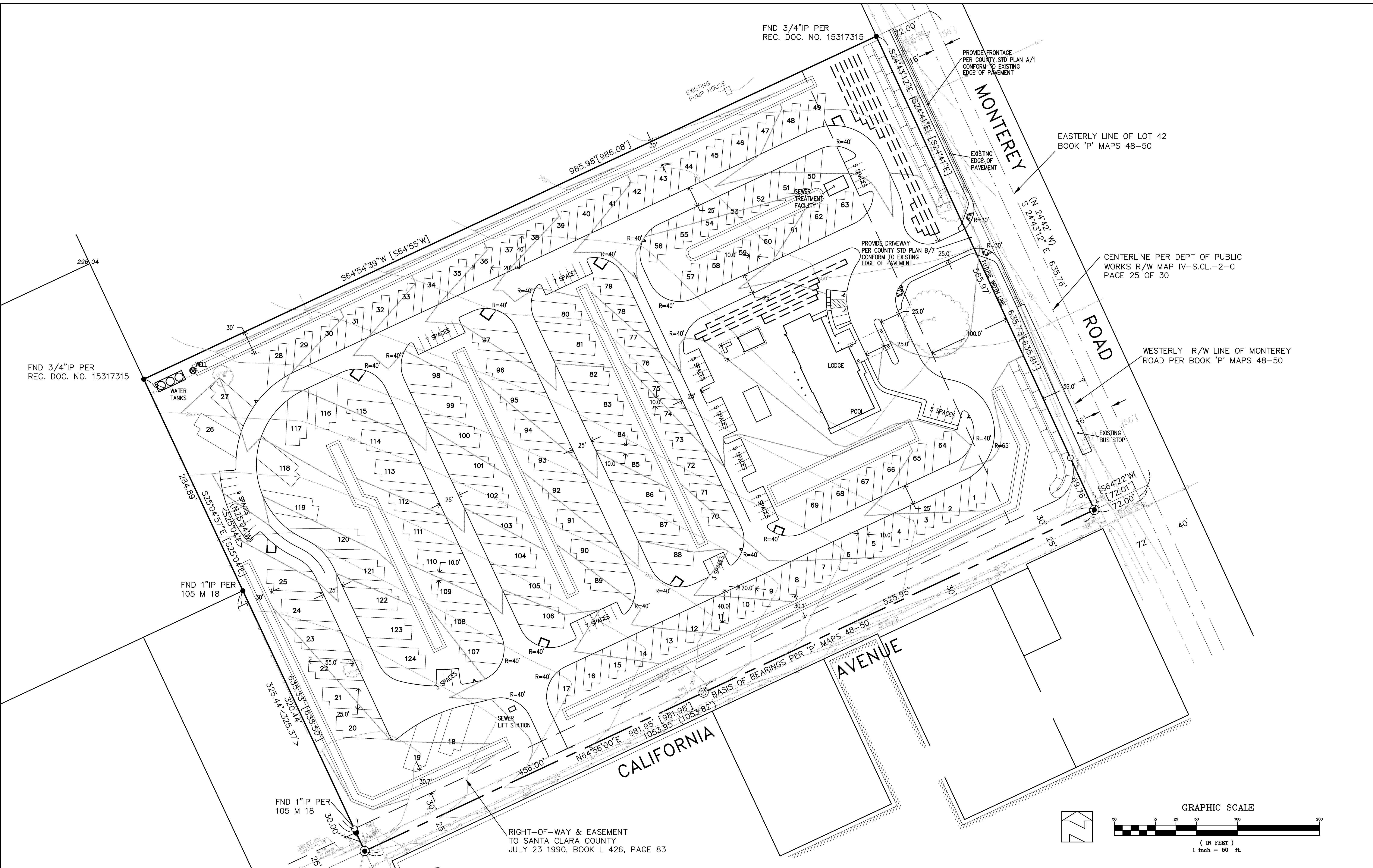


THE USE OF THESE PLANS AND SPECIFICATIONS SHALL BE RESTRICTED TO THE ORIGINAL SITE FOR WHICH THEY WERE PREPARED AND PUBLICATION THEREOF IS EXPRESSLY LIMITED TO SUCH USE. REPRODUCTION OR PUBLICATION IN WHOLE OR PART, IS PROHIBITED. TITLE TO THE PLANS AND SPECIFICATIONS REMAINS IN THE ENGINEER WITHOUT PREJUDICE. VISUAL CONTACT WITH THESE PLANS AND SPECIFICATIONS SHALL CONSTITUTE PRIMA FACIE EVIDENCE OF THE ACCEPTANCE OF THESE RESTRICTIONS.

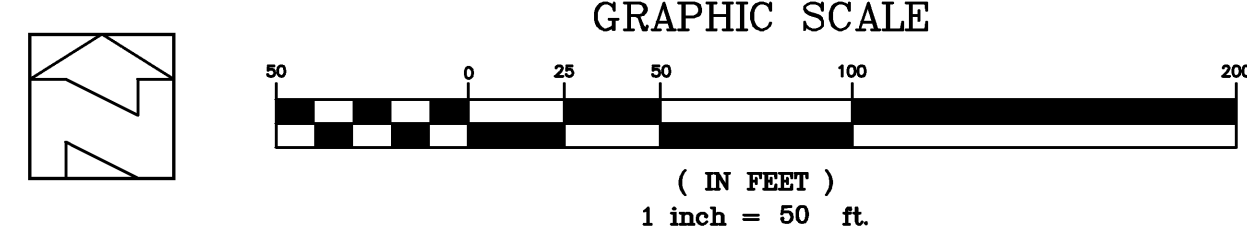


FND 3/4"IP PER REC. DOC. NO. 15317315

FND 1"IP PER 105 M 18

FND 1"IP PER 105 M 18

RIGHT-OF-WAY & EASEMENT TO SANTA CLARA COUNTY JULY 23 1990, BOOK L 426, PAGE 83



REVISIONS:		
DATE	DESCRIPTION	BY:

**Hanna Brunetti**  
 • Civil Engineers • Land Surveyors •  
 • Construction Managers •  
 Gilroy California (408) 842-2173

DATE: OCTOBER 2015  
 HORIZ. SCALE: 1"=50'  
 VERT. SCALE: NONE  
 DESIGNED BY: AW  
 CHECKED BY: TM  
 DRAWN BY: TM

REFERENCES

UNINCORPORATED  
 OCTOBER 2015

**Preliminary Site Plan**  
 Lands of Patel - at the corner of Monterey Road and California Avenue  
 SANTA CLARA COUNTY CALIFORNIA

SHEET  
**3**  
 OF 6  
 JOB NO.  
**14046**