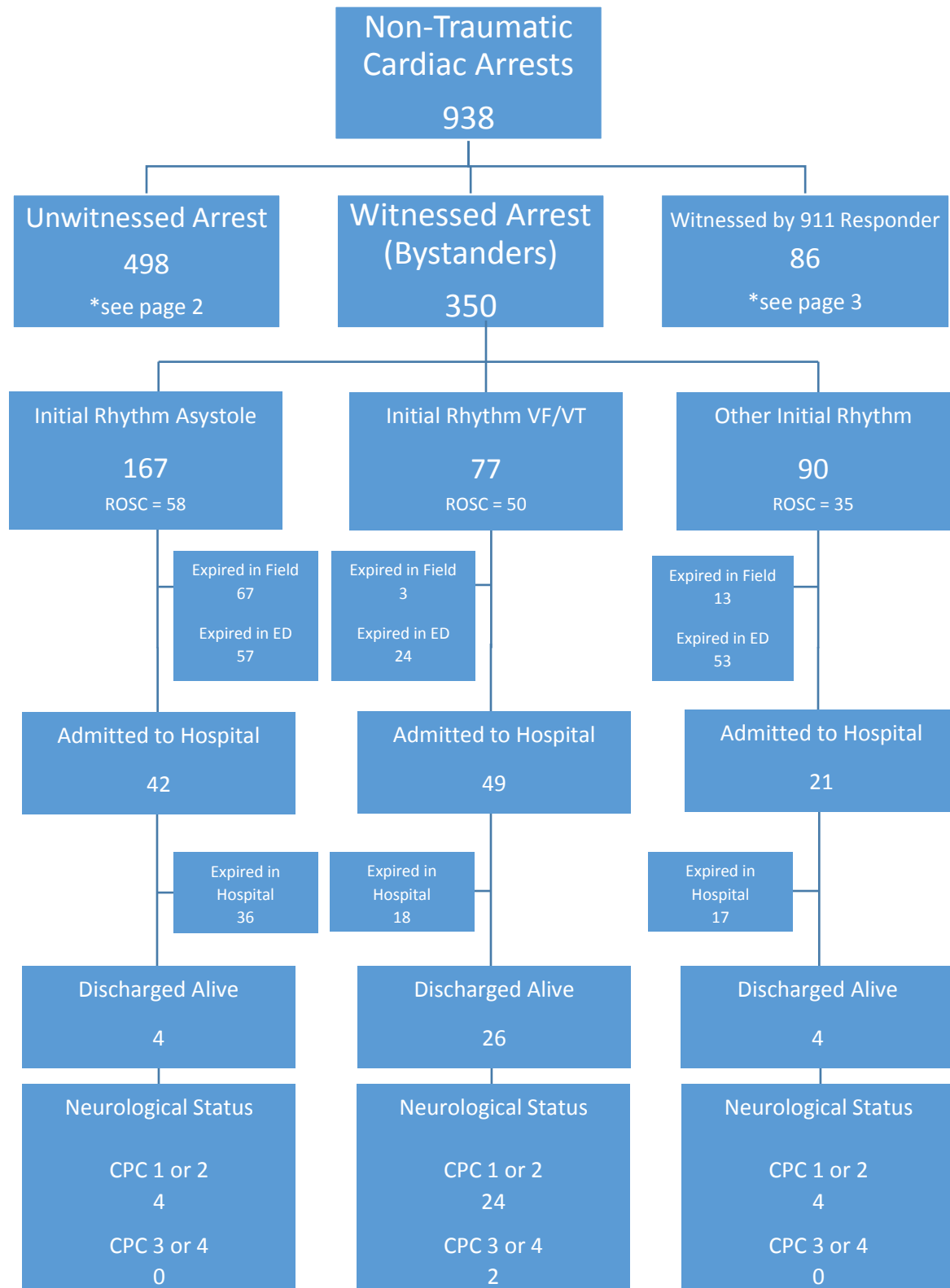
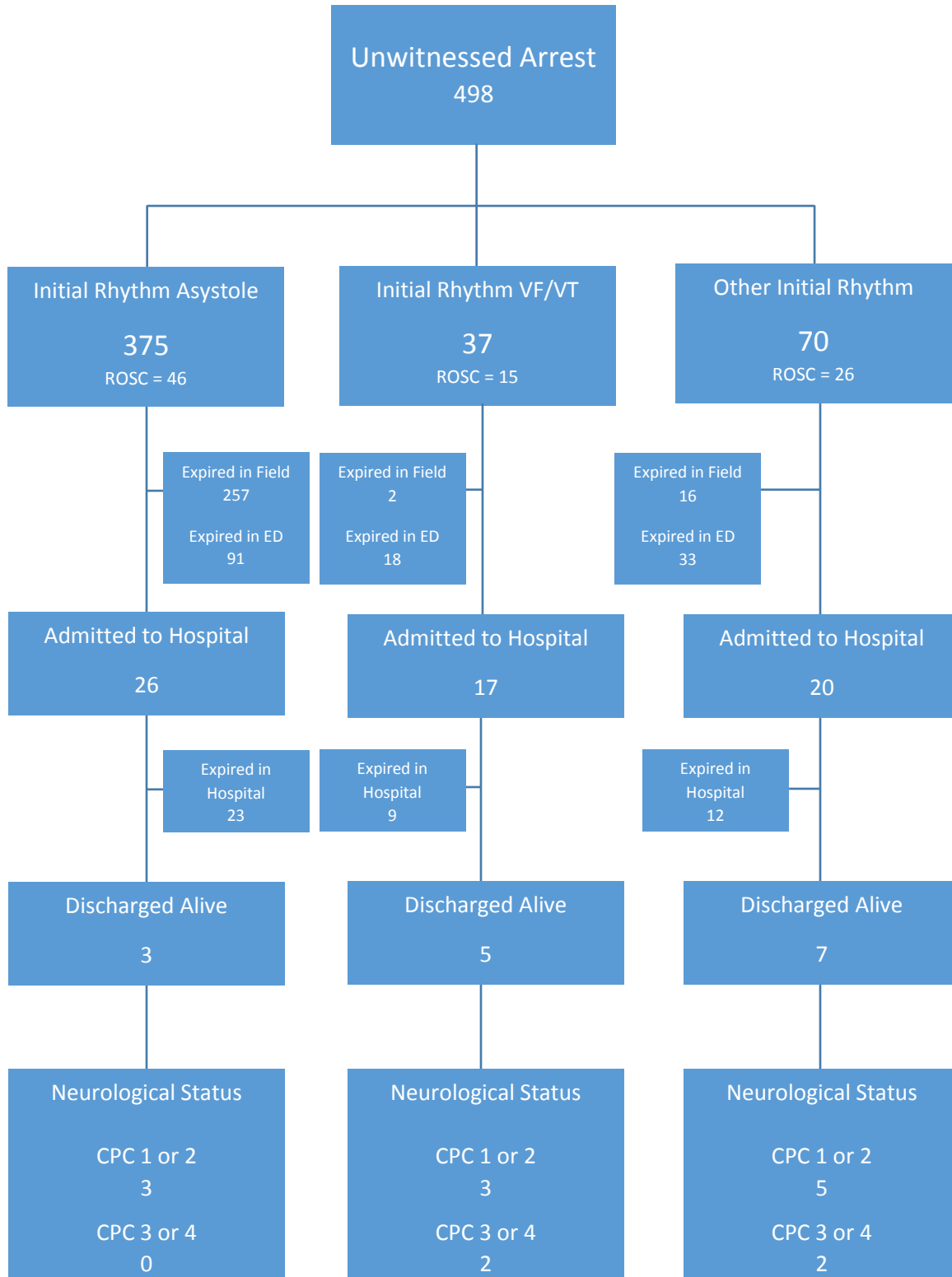


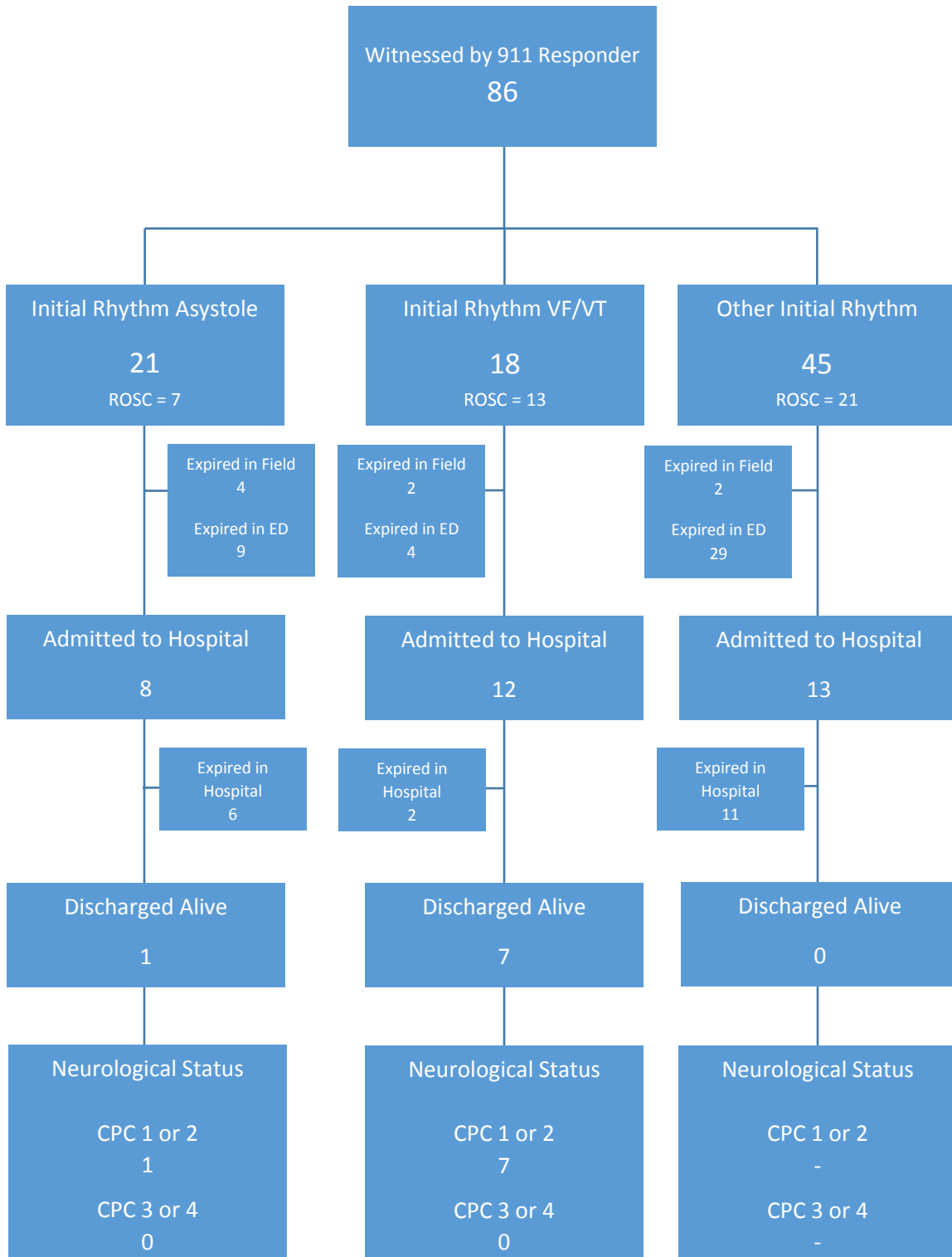
Utstein Survival Report



Utstein Survival Report



Utstein Survival Report



2017 Cardiac Arrest

2017	N	Incidence	ROSC	Admitted to Hospital (n)	Discharge CPC 1-2 (n)	Discharge CPC 3-4 (n)
Unwitnessed	498	53%				
VF/VT		8%	41%	46% (17)	3	2
Other Rhythm		15%	37%	29% (20)	5	2
Asystole		78%	12%	7% (26)	3	0
Witnessed	350	37%				
VF/VT		23%	65%	64% (49)	24	2
Other Rhythm		27%	40%	23% (21)	4	0
Asystole		50%	35%	25% (42)	4	0
911-Witnessed	86	9%				
VF/VT		21%	72%	67% (12)	7	0
Other Rhythm		54%	47%	29% (13)	--	--
Asystole		25%	33%	38% (8)	1	0

Non-Traumatic Etiology Survival Rates	Santa Clara County	National CARES
Overall	6.6%	10.4%
Bystander Witnessed	10.9%	16.1%
Unwitnessed	3.0%	4.6%
Utstein¹	33.8%	32.6%

¹Utstein: Witnessed by bystander and found in shockable rhythm

CARES Survival Report	Santa Clara County	National CARES
Total N	938	76,215
ROSC (%)	280 ² (32.0)	24,249 (31.8)
Survival to Hospital Admission (%)	219 (23.3)	21,414 (28.1)
Survival to Hospital Discharge (%)	62 (6.6)	7,949 (10.4)
Survival to Discharge with CPC 1 or 2 (%)	56 (6.0)	6,392 (8.4)

²Out of 876 patients with known ROSC outcome

Cumulative 2016-2017 Cardiac Arrest

Cumulative 2016 - 2017	N	Incidence	ROSC	Admitted to Hospital (n)	Discharge CPC 1-2 (n)	Discharge CPC 3-4 (n)
Unwitnessed	924	54%				
VF/VT		7%	33%	36% (24)	4	3
Other Rhythm		16%	36%	26% (38)	6	4
Asystole		77%	12%	8% (54)	3	2
Witnessed	577	33%				
VF/VT		25%	66%	62% (87)	41	3
Other Rhythm		29%	43%	28% (45)	13	3
Asystole		46%	34%	22% (57)	4	2
911-Witnessed	206	12%				
VF/VT		16%	70%	61% (20)	12	0
Other Rhythm		60%	43%	34% (41)	9	2
Asystole		24%	33%	31% (15)	1	3