

Almaden



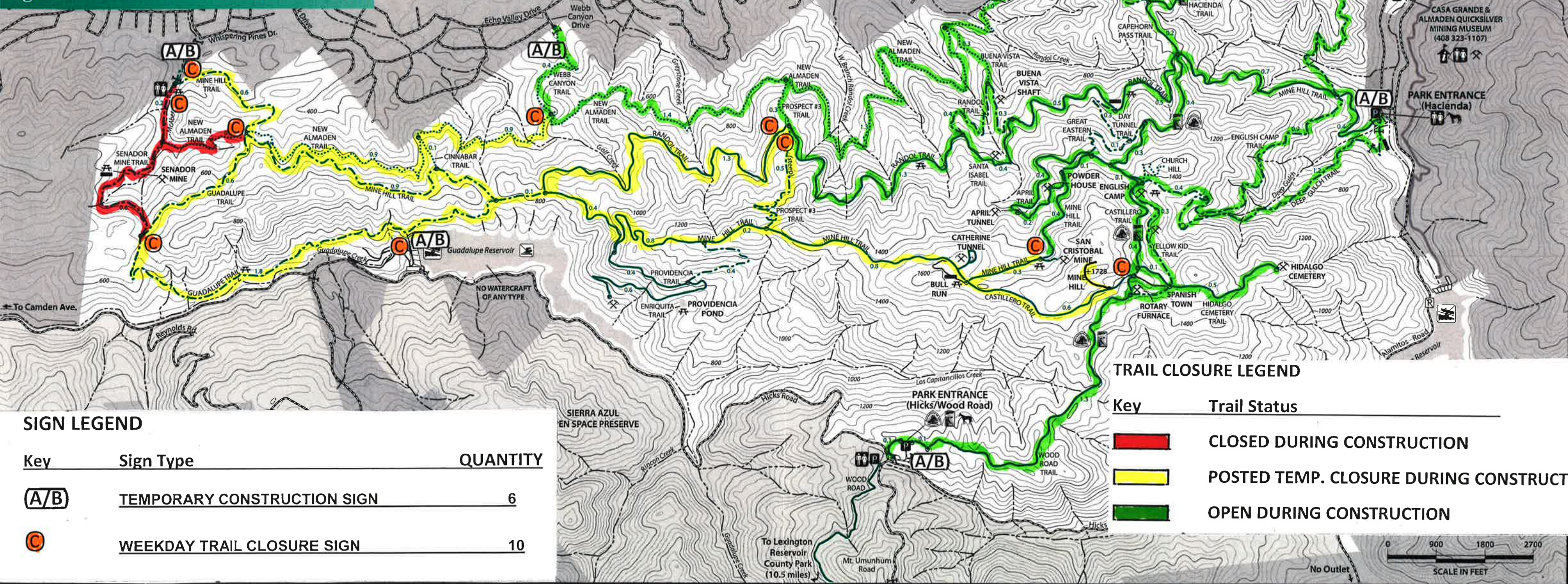
Quicksilver



SANTA CLARA COUNTY PARKS
Regional Parks and Recreation Areas

LEGEND

- | | | | | | |
|--|-----------------------------------------------------------------------------------|--|-----------------------------------------------|--|-----------------------------------------------|
| | Ranger Station/Visitor Center
(at Calero County Park)
Phone: (408) 268-3883 | | Private Property | | Two Lane Paved Road |
| | Restrooms | | Other Public Lands | | Two Lane Park Road |
| | Public Telephone | | Equestrian Staging | | Service Road |
| | Call Box | | Water Trough | | Hiking/Equestrian/Bicycling |
| | Fire Station | | Horseshoes | | Hiking/Equestrian |
| | Parking | | Gate | | Hiking |
| | No Parking | | No Swimming | | Trail Distance (miles) |
| | Picnic Area | | No Boating | | Bay Area Ridge Trail |
| | Historic Site | | Creek | | Juan Bautista de Anza National Historic Trail |
| | | | -1400 Elevation Contours
(40 ft. interval) | | |



SIGN LEGEND

Key	Sign Type	QUANTITY
	TEMPORARY CONSTRUCTION SIGN	6
	WEEKDAY TRAIL CLOSURE SIGN	10

TRAIL CLOSURE LEGEND

Key	Trail Status
	CLOSED DURING CONSTRUCTION
	POSTED TEMP. CLOSURE DURING CONSTRUCTION
	OPEN DURING CONSTRUCTION

